

3 Bedroom Apartment / Flat for sale in HSR Layout, Bangalore

1.6 crore



Cozy Apartments For Sale Close To HSR Layout, South Bangalore

Harlur Road, HSR Layout, Bangalore - 560102 (Karnataka)

- Area: 1720 SqFeet ▼
- Bathrooms: Two
- Total Floors: Four
- Furnished: Unfurnished
- Price: 16,050,000
- Age Of Construction: Under Construction
- Possession: Within 2 Years
- Bedrooms: Three
- Floor: First
- Facing: East
- Transaction: New Property
- Rate: 9,331 per SqFeet ^{-5%}

Description

Cozy apartments for sale close to HSR Layout, South Bangalore

Spacious 3BHK flats for sale @1.60 crore onwards.

World class amenities with 24/7 security and comfort life.

Enjoy easy connectivity to Electronic City and Sarjapur Road.

Just 2 km away from the nearest Kudlu Gate Metro station.

BBMP and RERA approved project.

Please mention that you saw this ad on PropertyWala.com when you call.

Location

* Location may be approximate

Landmarks

Nearby Localities

[Hosur Road](#), [Chandapura Circle](#), [Iggalur](#), [Chandapura](#), [Bommasandra](#), [Marsur](#)

* All distances are approximate

Locality Reviews

HSR Layout, Bangalore

HSR Layout is a well planned layout with good connectivity. startup Environment, good connectivity and restaurants, cafes, travel facilities within the area are the reasons HSR layout is preferred by most of the startups in south Bangalore.

Pros:

- Well planned and good connectivity
- Good working environment
- Restaurants, cafes, travel facilities within the area

Posted: Nov 26, 2020 by [Anurag Sharma \(Star Assets Realty\)](#)

Bangalore known as Bengaluru, is known for its pleasant climate throughout the year. The venue located in HSR Layout is located between Hosur Main road and Sarjapur Main road. This area is easily accessible from Madivala, Kormangala, BTM layout and Electronicity too.

Pros:

- Good Place

Posted: Jan 16, 2020 by Bharath Kumar

Advertiser Details

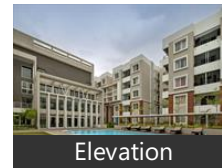
Bhavya reddy

HSR Layout, Bangalore
mob: 8495903844
tel:
mail:
www.propertywala.com/U23878296



Scan QR code to get the contact info on your mobile

Pictures



Elevation



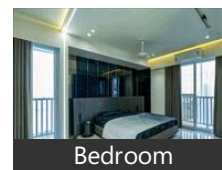
Living Room



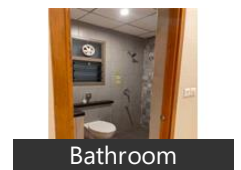
Dinning Room



Bedroom



Bedroom



Bathroom

Prime location. Well developed area. Nearby railway station. IT hub with all the modern amenities available

Pros:

- *Well developed area*
- *Good connectivity*
- *Huge potential for property investments*

Cons:

- *Traffic congestion*
- *Crowded area*

Posted: Apr 8, 2019 by Lavanya B

Prime location. Well developed area. Nearby railway station. IT hub with all the modern amenities available.

Pros:

- *Prime location*
- *Good connectivity*
- *IT hub*

Cons:

- *Traffic congestion*
- *Crowded area*

Posted: Apr 5, 2019 by Anusha B

HSR Layout is one of the posh areas in Bangalore and is also known as Hosur-Sarjapur Road Layout. It is situated in proximity to Koramangala, Electronic City, ITPL which is a home for offices of top MNCs.

Location & neighbourhood- It is strategically located in South Bangalore and serves as an ideal spot for end-use. It is highly preferable among high-income corporate employees, traders and businessmen. Civic utilities like schools, hospitals, educational institutes, banks, restaurants, entertainment hubs, etc.

Since the area is already in demand among working professionals because of its proximity to IT hubs and office spaces. So, finding an ideal accommodation might turn into an uphill task here. The locality is full of green spaces and is quite peaceful comparatively neighbouring destinations like Koramangala, Electronic City, Whitefield, Sarjapur Road and ITPL. It is neatly divided into 1-7 sectors.

Infrastructure: It is located quite close to the railway station and 8 Kms away from the international airport. Even, private cabs and autos are easily available 24x7.

Pros:

- *Ideal spot for end-use*
- *Direct Connectivity*
- *Huge potential for property investments*

Cons:

- *Heavy Traffic*

Posted: Mar 29, 2019 by [Hema q \(Ark Realteck\)](#)

Well planned area. Good connectivity. IT hub with all modern facilities are available.

Pros:

- *Well developed area*
- *Good connectivity*
- *IT hub*

Cons:

- *Crowded area*
- *Car Parking issue*

Posted: Mar 15, 2019 by Aradya B

HSR layout is a very well planned layout with very good connectivity to each sector. HSR layout is in high demand for office spaces and commercial spaces.

Pros:

- *Connected to ring road*
- *Connected to hosur road*
- *All amenities within the area*

Posted: Feb 8, 2019 by [Hindustan Assets \(Hindustan Assets\)](#)

Sector-4 in HSR Layout is a great location for schools, Colleges, Hospitals, IT hub & Business, Banks, ATMs. The most strategic location with for commercial show rooms, offices, BDA complex. It is well connected to Electronic City and ITPL.

Pros:

- *Multiple Benefits*

Cons:

- *Nothing as such*

Posted: May 16, 2017 by Ratna

Purva Fairmont is a lovely residential property in the heart of HSR Layout which is actually a mid-point between Whitefield and Electronic City and also just next to Sarjapur Road.

Pros:

- *Very close to major schools like Cambridge, National Public School and DPS East.*

Posted: Nov 22, 2016 by Subhayu Basu

HSR layout is strategically located between Hosur Road and Sarjapur Road and hence the name Hosur Sarjapur Road. The roads are 40 feet wide to 80 feet wide and some of the important roads are attached with service roads. The ring road attached to HSR lay out is wide enough with main roads, service roads and one more service road inside the lay out adjacent to a large drain water storm. Many of the drainage canals are re-modified to facilitate easy water flow across the lay out. Many of the people in HSR would not know that one of the main road - 9th main - is having a large drainage underneath were two heavy vehicles can easily move inside the drain during construction time. Some of the critical improvements are

in-progress in terms of taking the heavy power lines under ground. Most of the roads have the underground cables for optical cables using ditch with machines.

Pros:

- *Wide roads*
- *Road side trees*
- *Connectivity*

Cons:

- *Mixed zone induced office spaces in some areas*
- *Parking needs in some of the mains like 27th main*
- *Mix of few villages with narrow roads*

Posted: Oct 13, 2014 by Bputhoor puthoor

HSR Layout, Bangalore is rated 7 out of 10 based on 10 user reviews.

Disclaimer: The reviews are opinions of PropertyWala.com members, and not of PropertyWala.com.

Explore

[Similar Properties](#)

[Properties in HSR Layout, Bangalore](#)

[Projects in Bangalore](#)

[Brokers in Bangalore](#)

More Information

Report a problem with this listing

Is this property no longer available or has incorrect information?

[Report it!](#)

Disclaimer: All information is provided by advertisers and should be verified independently before entering into any transaction. You may visit the relevant RERA website of your state to verify the details of this property. PropertyWala.com is only an advertising platform to help connect buyers and sellers and is not a party to any transactions, nor shall be responsible or liable to resolve any disputes between them.