

## Mangalam Grand Vistas - Sirsi Road, Jaipur



### Residential Apartments

Available newly constructed 3 BHK luxurious flat for sale in Manglams Grand Vista, sirsi road,near vaishali nagar,Jaipur.

- Project ID : J811909521
- Builder: manglam
- Properties: Apartments / Flats
- Location: Mangalam Grand Vistas, Sirsi Road area, Jaipur (Rajasthan)
- Completion Date: Oct, 2011
- Status: Starting

### Description

**Manglam Group** is one of the most eminent and well known construction companies in Jaipur. Their building prowess is widely acknowledged across the realm of estate domain in Rajasthan. The group's influence in the state's property development is rapidly growing with each passing day. The firm has infused new styles of architecture in its structures and as a result, completely revolutionized the whole concrete landscape in Rajasthan. With an unflinching commitment to excellence, the group has garnered great acclaim from all kinds of customers. Within a very brief span of just 5 years, the enterprise has accomplished 14 schemes that include 9 housing and 5 business ventures. Possessing 12 projects under construction, it comprises 4 residential assignments, 4 business structures and 4 amalgamated townships situated at Jaipur, Udaipur and Bhilwara.

**Manglam Grand Vistas** inspires you to live a splendid life in a new way, life that is plentiful with the entire vista around. Adorned with all comforts of modern living, these luxury apartments will pamper you with a life style that is truly grand & international. The sleek and contemporary interiors as well as exteriors are eye-catching and especially designed to match your lifestyle. Luxurious bedrooms with a calming impression make you feel warm and cozy. Big airy windows let the sunshine warm your heart and touch your soul. Quaint balconies prompt you reach out and hug that glittery sky at nights. Manglam's Grand Vistas gives complete freedom to live your passion-whatever it may be. High on aesthetic values, Grand Vistas will be picture perfect with pleading ambience and provide homes that enhance your lifestyle. So, be prepared for receiving compliments for making the right choice. 75% of the plot area will be opened for recreational activities along with roads, paved walkways, jogging and cycling tracks.

### Lifestyle Amenities:

- Club Membership to its Residents.
- Swimming Pool.
- Gymnasium
- Day care center
- Business center with Internet, Fax
- Play park having slides, swings and see saws
- Total 8 elevators
- Power backup for common light load and elevators
- Rainwater harvesting
- RCC framed column beam earth quake resistant structure
- Well organized open parking
- Latest fire fighting systems
- Centralized control room manned by well-trained security personnel.
- Entry to resident's block only after proper authorization.
- Surrounded by 6 feet high compound wall.

### Features

#### Luxury Features

- Power Back-up ■ Lifts ■ RO System
- Water Softner

#### Lot Features

- Balcony ■ Private Garden ■ Corner Location

#### Exterior Features

- Reserved Parking ■ Visitor Parking ■ Servant Quarter
- Basement

#### Maintenance

- Maintenance Staff ■ Water Supply / Storage
- Boring / Tube-well ■ Rain Water Harvesting
- Waste Disposal

#### Security Features

- Security Guards ■ Electronic Security
- Intercom Facility ■ Fire Alarm

#### Interior Features

- Woodwork ■ Modular Kitchen
- Feng Shui / Vaastu Compliant ■ Marble Flooring

#### Recreation

- Swimming Pool ■ Park ■ Fitness Centre / GYM
- Club / Community Center

#### Land Features

- Clear Title ■ Freehold Land ■ Plot Boundary Wall
- Society Boundary Wall ■ Corner Plot
- Feng Shui / Vaastu Compliant
- Club / Community Center ■ Adjacent to Main Road
- Water Connection ■ Electric Connection
- Close to Hospital ■ Close to School

Other features

- CONCEPT Three clusters having 260 flats 75% of the plot area will be opened for recreational activities along with roads paved walkways
- jogging and cycling tracks CONVENIENCES Club Membership to its Residents. Swimming Pool. Gymnasium Day care center Business center with Internet
- Fax Play park having slides
- swings and see saws Total 8 elevators Power backup for common light load and elevators Rainwater harvesting RCC framed column beam earth quake resistant structure Well organized open parking Latest fire fighting systems SECURITY Centralized control room manned by well-trained security personnel. Entry to resident's block only after proper authorization. Surrounded by 6 feet high compound wall. AMBIENCE Naturally lighted and ventilated rooms. Water bodies/fountains. Breathtaking view of landscape area from all units. GENERAL Well designed entrance lobby and lift lobbies on all floors. Vitrified flooring in all rooms. Door and door panels made from superior quality wood. Finishing of wall using premium quality plastic paint with smooth P.O.P base. KITCHEN Semi modular kitchen. Platform with stainless steel sink. Kitchen fittings of ISI make Two feet glazed tiles dado above platform kitchen fittings of ISI mark. ELECTRICAL Concealed copper wiring. Adequate points with modular switches. Children friendly electrical connections. Light fittings in entire apartment. TOILETS Bath fittings of indigenous good brands. All good quality sanitary fittings. 7 ft height designer Dado tiles in all bathrooms with anti skid flooring. Concealed plumbing

Gallery

Pictures



Aerial View



Elevation



Close View



Main Entrance



Gymnasium



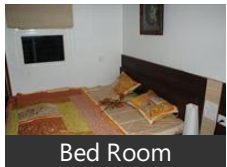
Living Room



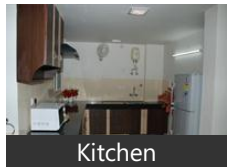
Children's Bedroom



Master Bed Room



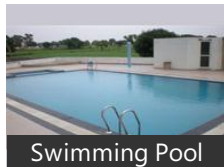
Bed Room



Kitchen



Dinning Area



Swimming Pool



Children's Play Area

Floor Plans



Location Map



Layout Plan



Floor Plan-1



Floor Plan-2



Floor Plan-3



Floor Plan-4

Documents



## Location

## Landmarks

### Transportation

Helipad Airport Buliwal (<20km), Sanganer Airport (<21km), Brinks Arya Airport Office (<21km), Jai Jaipur Sanganeer Airport (<21km), Jaipur Airport Sanganer (<21km), A (<22km), Subodh Public School (<22km), Kardhani Bus Stand (<6km), Kanakpura Railway Station (<2km), Kanakpura Railway Station (Amod) (<2km), Shalimar Hotel (<14km)

### Markets & Shopping Malls

Shrey Associates (<6km), Reliance Fresh Shopping Mall (<7km), Site For Triton Mall (<11km)

### Hotels & Guest Houses

Umaid Bhawan Guest House (<13km), Hotel Milan (<5km)

### Banks & ATMs

Hdfc Bank (Branch And Atm) (<6km), Sbj Bank Circle (<6km), Varuns Housedon A-2 Bank Colony (... Mukesh Garg (<7km), Oriental Bank Of Commerce (<8km), State Bank Of India Jaipur Cantt. (<9km), Bank Of Rajasthan (<10km), Vannis (<12km), Dena Bank Ambawadi (<12km)

### Restaurants & Clubs

Abhimanu Restaurant (<4km), Bhanus Club 37 (<7km), Sunrise Health Resort (<7km), Club Grass Field (<9km)

### Parks

Park (Rfc Colony) (<5km), Nursery Park (<6km), Bhomiya Ji Park (<6km), Neel Padam Sarovar Park (<6km), Chitrakoot Sector -6 Park (<6km)

### Hospitals & Clinics

Sirsi Hospital (<3km), Hospital (<5km), Metro Hospital Khatipura (<6km), Amar Jain Hospital (<6km), Garg Clinic (<10km), Upchaar Clinic-Dr. L.C.Dhoka (<11km), Sukh Sagar Clinic-Dr Arun Gupta (<11km), Soni And Janta Clinic (<12km)

### Movie Halls

Lata Cinema (<10km)

### Offices

Tryst New Office (<5km), Dilip Singh Dodiya Office (<6km), Anand Bhaiya Ka Office (Lalityam ...)

### Schools & Colleges

Rawat Mahila College (<7km), My Office (<10km), Mr.Ajay Jain - Modern Education T T... Bhavani Niketan Girls College (<11km), Deep Shika College (<11km), Mahatma Jyotiba Foole Girls Enginee.. Evershine International School (<1km), Holy Cross English School (<2km), Chodary School (<3km), Vaishali Public School (<4km), Government School (<4km), Sarweshwari Foundation School (<4km), Sunil Kumars( Sr.Sec.School Sirsi) (<4km), Adarsh Vidya Mandir School (<5km), Sanskar School Road (Sirsi Road) (<5km), Prakhar Aerons School (<5km)

\* All distances are approximate

## Properties

Type	Area	Possession	Price *
------	------	------------	---------

2BHK Apartment / Flat	1000 SqFeet	-	₹ 30 - 40 lacs
2BHK Apartment / Flat	1075 SqFeet	-	₹ 40 lakhs
3BHK Apartment / Flat	1552 SqFeet	-	₹ 49 lakhs
3BHK Apartment / Flat	1680 SqFeet	-	₹ 55 lakhs

\* Data has been collected from publicly available sources and may not be up to date.

## Mangalam Grand Vistas News

### ■ India High School Expedition

*17 days ago* - Create a photo essay of Rajasthan's grand forts and palaces ... As we walk, take in hillsides dotted with temples and monasteries, and see exquisite vistas of the Himalaya. I am fascinated by India's vastness and diversity. When exploring, all my ... [more](#)

## Expert Reviews on Mangalam Grand Vistas

Explore

[Projects in Jaipur](#)

[Brokers in Jaipur](#)

More Information

Report a problem with this listing

Is any information on this page outdated or incorrect?

[Report it!](#)

**Disclaimer:** All information is provided by builders, advertisers, or collected from publicly available sources and may not be verified as per RERA guidelines. Any information provided on this website, including facts and figures, should be verified independently before entering into any transaction. PropertyWala.com is only an advertising platform to help connect buyers and sellers and is not a party to any transaction, nor shall be responsible or liable to resolve any disputes between them.

[PropertyWala.com](#) » [Jaipur Real Estate](#) » [Projects in Jaipur](#) » [Mangalam Grand Vistas - Sirsi Road, Jaipur](#)