

## Shop for sale in Wellgrow Orion One32, Sector 132, Noida

65.45 lakhs



### Orion One 32 Is A Premier IT Business Park With AI-Enabled Innovations

Orion One 32, Sec 132, Noida, Sector 132, Noida - 20130..

- Project/Society: [Wellgrow Orion One32](#)
- Area: 300 SqFeet ▾
- Bathrooms: One
- Floor: Ground
- Total Floors: Twenty
- Facing: North East
- Furnished: Unfurnished
- Transaction: New Property ■ Price: 6,545,000
- Rate: 21,817 per SqFeet
- Age Of Construction: Under Construction
- Possession: Immediate/Ready to move

### Description

Located in Area 132 of Noida, Orion one 32 is a premier IT business park with AI-enabled innovations to overhaul traditional business strategies for a cutting-edge workforce. The project is well-planned with carefully selected AI-enabled office spaces ideal for BPOs, multinationals, collaboration spaces, KPOs and enterprises. Orion Sector 32 Noida offers modern corporate space, a single IT business project on Noida Expressway, with the best facilities for work-life balance and close to the nearest metro station.

When you call, don't forget to mention that you saw this ad on PropertyWala.com.

### Features

#### General

- Power Back-up ■ Centrally Air Conditioned
- Room AC ■ Lifts ■ High Speed Internet ■ Wi-Fi

#### Lot

- Private Terrace ■ Balcony ■ Private Garden
- Basement ■ Corner Location ■ Park Facing

#### Recreation

- Swimming Pool ■ Park ■ Fitness Centre / GYM
- Club / Community Center

### Location

\* Location may be approximate

### Landmarks

#### Religious Places

Shri Siddh Pith Veshnu Mata Mandir ... Covenant Life Church (<0.5km), Shiv Mandir (<1km), Mata Mandir (<1km), Trayanbakeswar Dham (<1km)

#### Hospitals & Healthcare

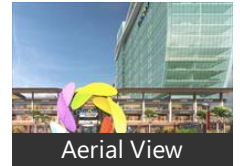
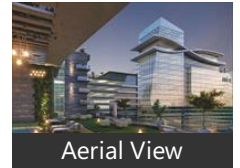
Dr Lal Pathlabs (<0.5km), Redefine Health (<0.5km), Health2core (<0.5km), Kahn Clinic (<0.5km), Lenskart Com (<1km), Core Diagnostics (<1km), Bengali Clinic (<1km), Dr Pankaj Kumar Clinic (<1km), Unifarma Global Consumer Healthca.. JS Hospital-ER (<1km), Harit Medicare Orthopaedic Doctor & Sai Clinic (<1km), M A Health Care Clinic (<1km), Biswas Clinic (<1km), Dr. Padmaja Mohan Clinic (<1km), Rikh Pathlab (<1km), R S Bangali Clinic (<1km), Kabira Home Care & Rik Path Care . ... Dr Praveen Kumar Dentist Clinic (<1k.. Dr. Nidhi Malhotra Clinic (<1km), Jaypee Hospital-ER (<1km), Dr Abhishek Gulia Cancer Specialist C.

### Advertiser Details

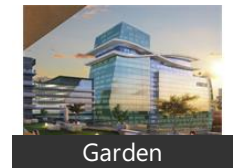
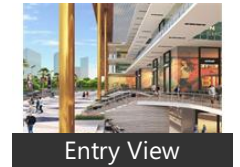
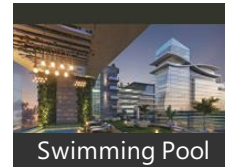
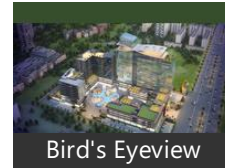


Scan QR code to get the contact info on your mobile  
[View all properties by FAV Consulting Services](#)

### Pictures

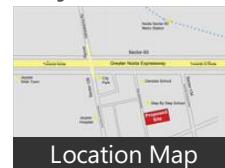


### Project Pictures



\* These pictures are of the project and might not represent the property

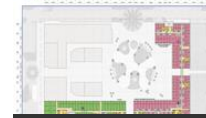
### Project Floor Plans



### Education

Somerville International School-Main.. Shaskiya Prathamik Vidyalaya (<1km), JBM Global School (<1km), Vivek Education Group-Quality Educ... Pendulumedu (<1km), Somerville International School (<1k... Zongly Solutions (<1km), Genesis Global School (<1km), Reiki Healing & Training Centre (<1k... Ignited Brains (<1km), Estudyclub (<1km), Rpa Learner Online Rpa Training Inst... Step by Step School-Alternate Gate (... IIHT (<1km), Step By Step School (<1km), Applied Geotech Solutions (<1km), Divya Public Academy (<1km), Tea Abacus Academy (<1km), Dr. Ruhi Foundation School (<1km), Science Tuitions for Class 9th and 10... Club English Ielts Pte Celpip Spoken ... Pro Excellence Academy (<1km), Home Tutor & Tuition Center (<1km.. Maths Tuition Classes (<1km), Saba Karim Cricket Academy (<1km), Heera Basketball Academy (<1km), Sanskriti Hobby Classes (<1km), Spanish Language Courses (<1km)

ORIGN



Last Floor Plan

\* These floor plans are of the project and might not represent the property

[more..](#)

### Locality Reviews

Sector 132, Noida

Sector 132 is an emerging institutional sector of Noida. The sector is on main Noida-Greater Noida expressway & is surrounded by residential sectors like 128, 93, etc housing Jaypee greens mega township, ATS, Eldeco, parswnath, etc. The sector is home to Adobe new office complex as well as renowned Genesis public school. DPS, Ryan, Step by step are other schools in the sector. The sector has many institutional buildings like Logix Technova, ETT, etc

#### Pros:

- Surrounded by Residential developments.
- On main noida expressway
- Direct link to Delhi via upper Yamuna road

#### Cons:

- Big sector under development

Posted: Sep 16, 2015 by G Prakash

Sec 132 Noida is fully developed commercial area and surrounded by residential area, JP Wishtown, ATS and many more. Investment in commercial property is a very good decision.

#### Pros:

- All commercial building is running successfully

Posted: Sep 7, 2015 by [Shantanu Priyadarshi \(Sidhyansh Infrastructures\)](#)

Sector 132 is situated on Noida-Greater Noida Expressway near Jaypee Greens WISH TOWN (An Integrated Town Ship & Jaypee Plots Scheme in Sector 128, Noida). It lies in the vicinity of commercial hub NPX (Matrix tower & Sifi Tower). Ample opportunity for business and employment. Close to Amity school, Amity university, HCL, DPS, Jaypee medical & Research College. Adjoining with AJS farms society.

#### Pros:

- Situated on Express Way Noida, near Jaypee's "WISH TOWN".
- Low investment & high returns.

Posted: May 3, 2013 by Sunil Saini

Sector 132, Noida is rated 9 out of 10 based on 3 user reviews.

Disclaimer: The reviews are opinions of PropertyWala.com members, and not of PropertyWala.com.

### Explore

[Similar Properties](#)

[Properties in Sector 132, Noida](#)

[Projects in Noida](#)

[Brokers in Noida](#)

### More Information

### Report a problem with this listing

Is this property no longer available or has incorrect information?

[Report it!](#)

**Disclaimer:** All information is provided by advertisers and should be verified independently before entering into any transaction. You may visit the relevant RERA website of your state to verify the details of this property. PropertyWala.com is only an advertising platform to help connect buyers and sellers and is not a party to any transactions, nor shall be responsible or liable to resolve any disputes between them.