

Independent House for sale in Guduvancheri, Chennai

74.74 lakhs



★ Featured

Customized Villa Near Guduvanchery

Nellikuppam Road, Sai Empire, Guduvancheri, Chennai -...

- Area: 957 SqFeet ▾
- Price: 7,473,850
- Rate: 7,810 per SqFeet **+35%**

Advertiser Details

Value Reality ●●●●●

Labam Samikkannu
Director

Tambaram East, Chennai

mob: 9514559500

tel: +91-99-42721514

mail:

www.propertywala.com/value-reality

Scan QR code to get the contact info on your mobile

[View all properties by Value Reality](#)

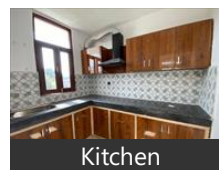
Description

DTCP Approved and RERA Approved Residential individual villa available for sale at Guduvancheri opposite Velammal school, 300 meters from Velammal school, Surrounding fully residential area, 40 feet road, good ground waters, Nearby by SRM school and Srimavidyalaiya

AMENITIES:

- Indoor games
- Security cabin with CCTV
- Children play area
- Walking track
- Sit out area
- Landscape garden
- Elevator
- Gym
- Rainwater harvesting, solar power backup,& Covered car parking
- 90% loan

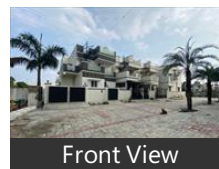
Pictures



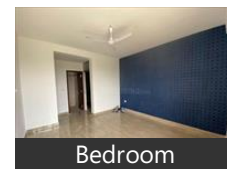
Kitchen



Bathroom



Front View



Bedroom

When you contact, don't forget to mention that you saw this ad on PropertyWala.com.

Location

* Location may be approximate

Landmarks

Restaurant & Shops

S. A Tailors (<0.5km), Harish Fruit Shop (<0.5km), Siddeswar Kirana And General Stores...
 Shri Mookambikai Ladies Wear (<0.5... Stichwell Tailors (<0.5km), Naveen Kaja Button Centre (<0.5km),
 Ajba Women, Shri Vanthana Tailors (<0.5km), Young Men Tailor (<0.5km), Jokers Park Mens Wear (<0.5km),
 Chakri Kirana and General Stores (<0... Tamilnadu Kadhar Bhavan (<0.5km), Umasri Kirana And General Stores (<...
 Shreya Rice Depot (<0.5km), Singapore Men, Zainnudin Provision Shop (<0.5km), SK Kirana Store (<0.5km),
 Pardep Kirana Store (<0.5km), Divya Rice Shop (<0.5km), Sekar Textiles (<0.5km),
 Shri Kavery Readymade & Textiles (<... Shri Ganesh Stores (<0.5km), Pavan Book Stores (<0.5km),
 Outlook Ladies Tailor (<0.5km), X-Cite Malar Garments (<0.5km), Om Sakthi Manogar Tailor (<0.5km),
 Saham Punjabi Dresses (<0.5km), Srinu Kirana and General Stores (<0.5.. Shri Tailors (<0.5km),
 Annan Siva General Stores (<0.5km), Jee Tex Tailors (<0.5km), New Kalanjiam Fashion Sudithars (<0...
 K. V. K. Tailors (<0.5km), Expo Expert Tailor (<0.5km), Vegetables Market (<0.5km), New Men Tailors (<0.5km),
 Gupta Kirana Store (<0.5km), Lalita General Stores (<0.5km), Shri Krishna Dresses & Textiles (<0.5k..

S R Tkirana and General Stores (<0.5k.. Udayam Textiles (<0.5km), Udayam Supermarket (<0.5km), Ramani Textiles (<0.5km), Kishkinta Footwear (<0.5km), M. R. Tailors (<0.5km), Deluxe Shoe Mart & Bags (<0.5km), Poonam Foot Wear (<0.5km), Blessing Book Centre (<0.5km), Pushkar General Store (<0.5km), Naga Laxmi General Stores (<0.5km), Vell Murgan Kirana and General Store.. Tara Ware Cloth Centre (<0.5km), Ramdev Fancy Gift & Toys (<0.5km), Shri Divya Rice Shop (<0.5km), Kavithas Collection (<0.5km), Book Fair (<0.5km), Jyothi Kirana and General Stores (<0.5km), Raj Kumar Kirana Store (<0.5km), Satish Provision Store (<0.5km), Hamdan Fashion (<0.5km), Manohar Kirana and General Stores (... Satyanaryana Kirana and General Sto... Lakshmi Cloth Stores (<0.5km), Shri Vinayaga Rice Store (<0.5km), Ankush General Stores (<0.5km), Abdul Kirana Store (<0.5km)

Hotel

Balaji Hotel (<0.5km), Sangameswara Hotel (<0.5km), Swathi Hotel (<0.5km), Shiva Hotel (<0.5km), [more...](#)

Locality Reviews

Guduvancheri, Chennai

Guduvanchery Nellikupam Road Is The Best Investment and Residential Area For The People Of Chennai Surroundings

Pros:

- *Fastest Developing Area*

Cons:

- *western side developing is slow*

Posted: Apr 5, 2023 by Sathish Kumar

- The day-by-day developments are good in Guduvanchery.
- The simultaneous growth in all sectors will lead to good demand for the plots in Guduvanchery.
- There will be tremendous growth in population
- The tendency of movement of people from the inner Chennai to Guduvanchery is getting very high momentum
- Due to the penetration of the work at home option culture, people are ready to move to calm and isolated places like Guduvanchery.
- Due to the tremendous increase in population there will be a tremendous increase in the real estate industry.
- This is mainly to satisfy the growing demand for their living spaces
- There will be tremendous demand for plots, individual houses and apartments
- The construction activities will get the momentum to start their activities for apartments and individual houses at many places in Guduvanchery.

Pros:

- *All Basic & High End Facilities*
- *100 Feet Road*
- *More Connectivities*

Posted: Sep 21, 2022 by Kabir Das

Fast developing area in Chennai , near maraimalai nagar and thiruporur area , suit layout and commercial use.

Pros:

- *NEAR BY MANY SCHOOLS*
- *MANY COMMERCIAL MALLS*

Posted: May 17, 2022 by [Ponniah Arumugam \(Padma Reality\)](#)

Good improvement place. Kayarambedu is so nice place to connect omr and chengapatu

Pros:

- *GOOD AIR*
- *NICE PEOPLE*

Posted: Aug 16, 2019 by pangalan AL

Fast developing area. many multinational companies in nearby Mahendra World City. many more shopping mall

Pros:

- *24 Hours Bus Facility All over Tamilnadu & South States*
- *Local Train facility 04.30 Am to 12.00 Midnight*

Posted: Jan 3, 2018 by [N Arangannal \(Neela Estate\)](#)

Guduvancheri is the fastest developing area from Tambaram to Sengulpattu and many peoples have started migrating from Chennai to Guduvancheri ,because of the affordability of the purchase of the plots/Plots.

Pros:

- *Few Schools are developing in that area*
- *Very calm and pollution free area.*
- *Best place to purchase a ground and construct*

Cons:

- *Roads to be developed.*
- *Bus service to be improved to inner parts of Guduvancheri.*

Posted: Dec 22, 2017 by K. Ramachandran

Guduvancheri is a well developed and more linking locality to all major parts of chennai . It has both road ways and rail ways connecting to the part of chennai more department stores available

Pros:

- *more schools and colleges available*

Cons:

- *night hours less bus facility*

Posted: Aug 15, 2016 by Gayathri ramakrishnan

Guduvanchery is strategically located at residential, industrial and commercial importance surrounded

with all kinds amenities and other features. It is locating very much on GST road (Chennai - Trichy National highway) which is a part of greater Chennai region surrounded by very huge residential houses, posh colonies, large Industries, factories, commercial complexes, Hotels and restaurants, , agricultural and farm cultivation, IT parks, IT companies and many Educational Institutions.

Lot of real estate companies de4veloping lot of layouts, plots, flats apartments, villas, Sprawling across so many acres of land,

Every Feature and amenity at Guduvanchery is to give complete peace and ultimate comfort. □ Availability of Good Ground Water □ Just 15 minutes travel distance to OMR – Thiruporur □ 24 Hours Bus facility to all over Tamil Nadu □ Surrounded by many Educational Institutions like SRM University, Valliammai Engineering College, Eva Stalin Business School, R.T.I College of Commerce, Vidya Mandir CBSE school, Sankara vidyalaya school, Mahindra world school, St.John's Matriculation School, etc

□ Guduvancheri is becoming the largest residential area between Tambaram and Chengalpattu because of the IT companies in and around like Accenture, Ford, Mahindra World City and SEZ □ Located at 15 minutes' drive from Tambaram □ 20 minutes' drive from Chennai International Airport □ 10 minutes' drive from Vandaloor & Proposed Bus Terminus.

Airports in Guduvancheri and in the neighbourhood

Airports nearest to Guduvancheri are sorted by the distance to the airport from the city centre. Follow relate airport hotel guides for accommodation booking.

Tambaran Airport (distanced approximately 9.6 km) – airport hotels

Madras Airport (distanced approximately 21 km) – airport hotels

Pondicherry Airport (distanced approximately 100 km) – airport hotels

Tirupati Airport (distanced approximately 100 km) – airport hotels

Vellore Airport (distanced approximately 110 km) – airport hotels.

Transportation[edit]

Guduvancheri is well connected to Chennai, Chengalpattu and southern cities through road and rail.

Pros:

- lot of residential colonies. good street lights, good laid roads, 24hrs bus and train facilities
- NO AIR POLLUTION.
- LOT EDUCATIONSL, INDUSTRIAL, COMMERCIAL FACILITIES.

Cons:

- THERE IS LOT COLONIES SO WATER SCARCITY IS PREVAILING THERE.
- EVEN THERE IS WIDER ROAD THE VEHICULAR POPULATION IS WHICH LEADS TRAFIC CRISES THERE.

Posted: Jul 15, 2016 by [Ramamoorthy Naidu \(Vip Housing And Properties\)](#)

Guduvancheri is the place where the govt. has projected for new bus terminal for south Tamil Nadu. Most of the reputed builders and now in focus like Shriram shankari, lancor, ceedeeyes. It is the best place to invest.

Pros:

- Best location

Posted: Mar 25, 2016 by N Neeraj

Guduvancheri its in GST Road - NH-45... In GST Road Railway & Bus Facility Both are available.

Guduvancheri Nellikuppam Road connecting GST Road & OMR Thiruporur. Guduvancheri is the largest residential area now between Tambaram & Chengalpattu.

Pros:

- Very Close to SRM University
- Very Close to Mahindra World City
- Tambaram going to be a 3rd Railway Terminus

Posted: Mar 16, 2016 by Sakthi

Guduvancheri, Chennai is rated 8 out of 10 based on 10 user reviews.

Disclaimer: The reviews are opinions of PropertyWala.com members, and not of PropertyWala.com.

Explore

[Similar Properties](#)

[Properties in Guduvancheri, Chennai](#)

[Projects in Chennai](#)

[Brokers in Chennai](#)

More Information

Report a problem with this listing

Is this property no longer available or has incorrect information?

[Report it!](#)

Disclaimer: All information is provided by advertisers and should be verified independently before entering into any transaction. You may visit the relevant RERA website of your state to verify the details of this property. PropertyWala.com is only an advertising platform to help connect buyers and sellers and is not a party to any transactions, nor shall be responsible or liable to resolve any disputes between them.