

2 Bedroom Apartment / Flat for rent in Pimpri Chinchwad, Pune

26,000



New 2 BHK Flat In Morwadi, Pimpri

2nd Floor, Sec 7D, Riverdale C.H.S., New Mhada Colony ,...

- Area: 1100 SqFeet
- Bedrooms: Two
- Bathrooms: Two
- Floor: Second
- Total Floors: Twelve
- Facing: North East
- Furnished: Semi Furnished
- Lease Period: 1 Months
- Monthly Rent: 26,000
- Rate: 24 per SqFeet
- Age Of Construction: 5 Years
- Available: Immediate/Ready to move

Advertiser Details

Vijay Marathe

Katraj, Pune

mob: 7875319962

tel: 9850802747

mail:

www.propertywala.com/U104401741



Scan QR code to get the contact info on your mobile

Description

New 2 BHK Flat in Morwadi, Pimpri

Main Features:-

2nd floor, Hall attached Balcony. Fully ventilated & ample sunlight in Flat. Balcony view is clear, excellent & enjoyable. Can view society functions in the premises & road view from Balcony. As per Vastu shastra.

Amenities:-

Semi furnished, Fans /Tube lights, Window Curtains, Electric water Geyser, Gas Pipe Connection, Rain water harvesting, Visitor parking, Covered & Open Parking, Fire security, Security, Personnel & Luggage Lift, Children playing zone, Park, Playground, Temple, Recreation hall, CCTV, 24x7 Water, Electricity Backup.

Locality Features:-

Cinemas, Shopping area, Super market, Hospitals, Schools, Colleges, Petrol pump, Banks, ATM, Public transport, Bus, Metro & Rly station.

Don't forget to mention that you saw this ad on PropertyWala.com, when you call.

Location

* Location may be approximate

Landmarks

Nearby Localities

[Chinchwad Gaon](#)

* All distances are approximate

Locality Reviews

Pimpri Chinchwad, Pune

Snehankit co op hsc soc. is situated in Tanaji Nagar near Shivaji Uday Mandal, Chinchwad Pune. Potdar International High School, PMPML bus stop, Moraya Gosavi Mandir is on walking distance from property. Aditya Birla Hospital is about 1 km from property. Big Bazar, Railway Station is about 3 km from property.

Pros:

- Hospital, Malls, Schools are surrounded by property

Posted: Jun 14, 2019 by Shreekant Pathak

Pimpri Chinchwad is one of the best location which is fully developed area. It is suitable for commercial purposes. Property location is of Pradhikaran property. Clean titled property.

Pros:

- Best Location

Pictures



Aerial View



Aerial View



Aerial View



Aerial View



Aerial View



Front View



Aerial View



Aerial View



Aerial View



Aerial View



Aerial View



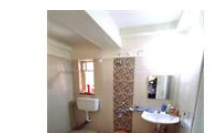
Aerial View



Aerial View



Aerial View



Aerial View

Posted: May 21, 2015 by Mahesh Patil

Pimpri Chinchwad has expanded & developed in last 10 years amazingly. Unlike core Pune areas, PCMC has wide roads. The drinking water is fetched from Pavna dam, which makes life easy for PCMC locales with almost no worries about water. Electricity is also available abundantly & nearly no power cuts. Recently, many renowned hospitals like Birla have started here. The vegetable / fruit market is very close to city & has lot of options that too not so expensive. Almost all renowned malls / multiplex have presence in PCMC. Almost all big shoppes like Jaihind, PNG, Ranka, Hastkala etc have made their presence in PCMC. Though, it still misses Tulashibaug or Ravivar peth :-)

Pros:

- *Wide roads, good infrastructure, no water shortage, no electricity fallouts, overall better place*
- *All coporation taxes like Water tax, Property tax are almost 1/2 compared to PMC*
- *All major hospitals, school / colleges in the near vicinity*

Cons:

- *Limited renowned schools & getting admission is touch*
- *Gaonwallas rule in many areas*
- *Cosmopolitan culture (may be beneficial for some)*

Posted: Oct 19, 2013 by Manoj Kulkarni

Pimpri Chinchwad, Pune is rated 6 out of 10 based on 3 user reviews.

Disclaimer: The reviews are opinions of PropertyWala.com members, and not of PropertyWala.com.

Explore[Similar Properties](#)[Properties in Pimpri Chinchwad, Pune](#)[Projects in Pune](#)[Brokers in Pune](#)**More Information****Report a problem with this listing**

Is this property no longer available or has incorrect information?

[Report it!](#)

Disclaimer: All information is provided by advertisers and should be verified independently before entering into any transaction. You may visit the relevant RERA website of your state to verify the details of this property. PropertyWala.com is only an advertising platform to help connect buyers and sellers and is not a party to any transactions, nor shall be responsible or liable to resolve any disputes between them.