

Alpine Vistula - Seegehalli, Bangalore



Sophisticated design and luxurious amenities

Alpine Vistula is presented by Alpine Housing Development Corporation Ltd at Seegehalli, Bangalore offers residential project that hosts 1 RK and 1/2/3 BHK apartment with good amenities

- Project ID: J630118967
- Builder: Alpine Housing Development Corporation Ltd
- Location: Alpine Vistula, Seegehalli, Bangalore - 560067 (Karnataka)
- Completion Date: Oct, 2020
- Status: Started

Description

Alpine Vistula conveniently situated near Sai Baba Ashram in Seegehalli, Bangalore. The project spread over 472 - 1636 sq.ft. comprising 1 RK, 1/2 and 3 bhk apartments. These apartments offer great value-for-money and are fully-equipped to meet all your needs. It's sprawling Clubhouse and recreational amenities include: Health Club, Tennis Court, Swimming Pool, Kids' Pool, Gym, Squash Court, Table Tennis arena, Kids' Play Area, and is even equipped with provisions for Rainwater Harvesting Systems.

Rera No : PRM/KA/RERA/1251/446/PR/171014/000211

Amenities :

- Gymnasium
- Swimming pool
- Kid's Pool
- Jogging Track
- Children's Play Area
- Table Tennis
- Tennis Court
- Squash Court
- Cricket Practice Nets
- Health Club
- Rainwater Harvesting

Being in the competitive market of Property Development since 1991, **Alpine Housing Development Corporation Ltd.** has earned a stellar reputation for itself based on their sheer dedication to the construction of superior quality homes, which can easily be distinguished by sophisticated design and luxurious amenities.

Having earned the trust of several families that have made Alpine their addresses over the years, Alpine's promise and commitment continues with millions of square feet being currently under development, spurred by one single statement.

There's nothing more rewarding than being trusted for 25 years!

Features

Luxury Features

- Power Back-up ■ Lifts

Recreation

- Swimming Pool ■ Park ■ Fitness Centre / GYM
- Club / Community Center

Land Features

- Water Connection

Exterior Features

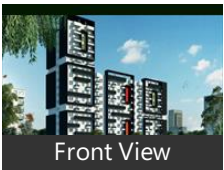
- Reserved Parking ■ Visitor Parking

Maintenance

- Rain Water Harvesting

Gallery

Pictures



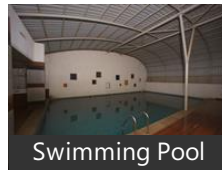
Front View



Pantry View



Basket Ball Court



Swimming Pool



Indoor Pool

Floor Plans



Master Plan



Floor Plan



Floor Plan A



Floor Plan B



Floor Plan C



Floor Plan D



Floor Plan E



Floor Plan F

Location

Landmarks

Hotel

FOUR POINTS BY SHERATON-Bengaluru Whitefield (<6km), Aloft Bengaluru Whitefield (<6km), Holiday Inn Express Bengaluru Whitefield (<7km), Keys Select Hotel Whitefield Bengaluru (<9km), Lemon Tree Hotel Whitefield (<9km), Miraya Hotel Whitefield Bengaluru (<9km), Radha Homestay (<9km), Mapple Express Bangalore (<10km), Europa 360 (<14km), Bengaluru Marriott Hotel Whitefield (<14km), Fortune Select Trinity-Itp Road (<9km), Collection O 30042 Melody Inn Whitefield (<14km), Oyo Flagship 475 Marathahalli (<14km), Ginger-Itp Road (<9km), The Orange Hotel-Marathahalli (<14km), Ebenezer Suites (<8km)

Public Transport

Whitefield Railway Station (<3km), KR Puram (<10km), Kundalahalli Gate (<11km), Marathahalli Ring Road Bridge (<13km), KR Puram Railway (<13km), Hoskote Bus Station (<11km), Bmtc Bus Station-Itp Road (<8km), Marathahalli Bridge & Ring (<13km), Graphite India-SB (<10km), Krishnarajapuram Railway Station (<14km), Shri Satya Sai Hospital (<7km)

Building

Chaithanya Samarpan (<1km), Prestige Shantiniketan (<6km), Wynn Gate (<2km), Arcade Dreams (<6km), Sowparnika Sanvi (<6km), Purva Riviera (<12km), Sobha Amethyst and Adamus (<3km), Isha Misty Green Whitefield (<5km), Sumadhura, Prestige Ozone (<8km), Alpineeco Doddanekundi (<11km), Brigade Exotica (<5km), Sohumi Isiri (<8km), Villa Grande (<1km), Asset Gardenia & Asset Enclave (<9km), Tzed Homes (<9km), Vaswani Brentwood (<12km), Summit Brigade Metropolis (<9km), Balaji Pristine (<7km), Brigade Metropolis (<10km), Durga Rainbow (<12km), Mahaveer Tuscan (<7km), Windmills of Your Mind Villas (<8km), Sri Krishna Ventures (<12km), Dna Infrastructure (<8km)

Recreation

Q Cinemas (<6km), Windmills Craftworks (<8km), DECATHLON (<10km), PVR Cinema (<10km)

Shopping Centre

Inorbit-Gate 1 (<7km), Forum Value Mall (<9km), Hypercity (<7km), INORBIT MALL (<7km), Ascendas Park Square Mall (<6km), SOUL SPACE ARENA (<11km), VR BENGALURU (<10km), Brookefield Mall (<10km)

Restaurant & Shops

Sri Vishnu Gas Agencies-Indane (<4km), Brand Factory (<13km), Kalamandir (<12km), More Mega Store (<12km), Reliance Fresh (<7km), Kaveri Indane Gas (<10km), MadhuLoka Liquor Boutique (<8km), Park Square Mall (<6km), MAYURA BAKERY & SWEETS (<7km)

Hospitals & Clinics

Vydehi Hospital (<8km), Narayana Hrudhayalaya Multispeciality Hospital (<10km), Sri Satya Sai Super Speciality Hosp (<10km), Sri Sathya Med Sci Specialty Hosp (<9km), Sri Sathya Sai General Hospital-ER (<10km), Telerad RXDX (<10km), Rainbow, Sankara Eye Hospital (<12km)

Business & Services

Ktpo (<8km), SJR Park (<7km), Cosmos Mall (<10km), Emc2 (<11km), Utc Aerospace Systems (<9km), Ficus Pax (<5km), Autocrat Engineers (<8km)

ATM/Bank/Exchange

State Bank of India (<10km), State Bank of India-Whitefield (<5km.. HDFC Bank-Karthiknagar (<11km)

Petrol Station

Hindustan Petroleum (<10km), Bharat Petroleum (<10km), Shell (<10km)

Educational Facility

Vydehi Institute of Medical Sciences ...

* All distances are approximate

Properties

Alpine Vistula News

Expert Reviews on Alpine Vistula

Explore

[Projects in Bangalore](#)

[Brokers in Bangalore](#)

More Information

Report a problem with this listing

Is any information on this page outdated or incorrect?

[Report it!](#)

Disclaimer: All information is provided by advertisers, including builders/agents/owners, or collected from publicly available sources and may not be verified under RERA. Any information provided on this website, including facts and figures, should be verified independently, including via the relevant RERA website, before entering into any transaction. PropertyWala.com is only an advertising platform to help connect buyers and sellers and is not a party to any transaction, nor shall be responsible or liable to resolve any disputes between them.

[Home](#) » [Bangalore Real Estate](#) » [Projects in Bangalore](#) » [Alpine Vistula - Seegehalli, Bangalore](#)