

## 2 Bedroom Apartment / Flat for sale in Hinjewadi, Pune

83 lakhs



### 2/3 BHK Apartments Starting 83 Lac In Hinjewadi

Hinjewadi, Pune, Hinjewadi, Pune - 411057 (Maharashtra)

- Area: 749 SqFeet ▾
- Bedrooms: Two
- Bathrooms: Two
- Floor: Sixth
- Total Floors: Sixteen
- Facing: East
- Furnished: Unfurnished
- Transaction: New Property
- Price: 8,300,000
- Rate: 11,081 per SqFeet **+15%**
- Age Of Construction: Under Construction
- Possession: Within 3 Years

### Description

Hinjewadi is located towards the west of Pune and is 21 kilometres from the Railway station. Over a period of time, it has developed into one of the biggest industrial areas of Pune, transforming from a sleepy village to a bustling neighbourhood. Hinjewadi is also home to historical attractions such as Shaniwar Wada, Vishrambaug Wada and Aga Khan Palace. The pride of Hinjewadi is its state of the art 500-acre Rajiv Gandhi Infotech Park which hosts a cluster of IT/ITES and BPO units. It houses some of India's largest IT conglomerates like Wipro, Tech Mahindra, TCS, Infosys, IBM and Cognizant. Hinjewadi is being developed in multiple phases. Phase 1, 2 and 3 are completed and further development has been planned from phase 4 onwards. Due to rapid development in the area, Hinjewadi faces heavy traffic congestion during peak hours. To avoid traffic jams, HMTVs are not allowed to enter the area from 8.30 to 11.30 AM every day.

When you contact, don't forget to mention that you found this ad on PropertyWala.com.

### Features

#### General

- Power Back-up
- Centrally Air Conditioned
- Room AC
- Lifts
- High Speed Internet
- Wi-Fi

#### Lot

- Private Terrace
- Balcony
- Private Garden
- Corner Location
- Park Facing

#### Exterior

- Reserved Parking
- Independent Garage

#### Maintenance

- Maintenance Staff
- Water Supply / Storage
- RO System
- Boring / Tube-well
- Rain Water Harvesting
- Waste Disposal

### Location

\* Location may be approximate

### Landmarks

Restaurant & Shops

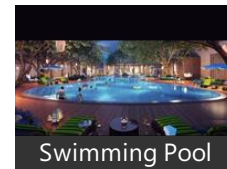
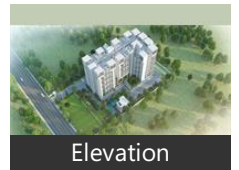
### Advertiser Details

**Proptiger Realty**  
**Prop Tiger**  
 Advertising Manager  
 Sector-32, Gurgaon  
 mob: 9910405580  
 tel:  
 mail:  
[www.propertywala.com/proptiger](http://www.propertywala.com/proptiger)



Scan QR code to get the contact info on your mobile  
[View all properties by Proptiger Realty Pvt. Ltd](#)

### Pictures



Levi, Raju Footwear (<0.5km), Flora Passion India (<1km), Anokhee Fashion (<1km), Bhavani Super Market (<1km), Westside (<1km), Zudio (<1km), Lifestyle (<1km), Pantaloons (<1km), Shriram General Store & Electric (<1k.. Jagadamba Super Market (<1km), Mataji Super Market (<1km), Shri Balagi Trading Kirana Wholesale... Epm Fashion (<1km), Prajwala Fashion Designer (<1km), Khoinoor Steel Art (<1km), Shri Ram Enterprises (<1km), Sai Super Market (<1km), Satyam Super Market (<1km), Puja Super Market (<1km), Ronak Super Market (<1km), Pooja Super Market (<1km), Krishna Footwear (<1km), Dreamrich Mens Wear (<1km), Payal Super Market (<1km), Chamunda Collection (<2km), Balaji General Stores (<2km), Elevate Bar (<2km), Soumya Collection (<2km), Radhika Collection (<2km), Ram Traders (<2km), Prakash Footwear & Bag House (<2k... Lalabag Trader (<2km), Satam (<2km), Mahima Mini Market (<2km), Sun Rise Restaurant (<2km), Rajaram Showroom (<2km), Aajji Trading Company (<2km), Pavan Stores (<2km)

Hospitals & Clinics

Shree Hospital (<0.5km), Shree Hospital-ER (<0.5km), Shri Broadband Internet Servicevic (<.. Apollo Diagnostics Hinjewadi (<1km), Ashraya (<1km), Vision Express India (<1km), City Hospital (<1km), SRL Diagnostics Lab (<1km), Balaji Multi Speciality Hospital & Me... Laxmi Medical & General Stores (<2k.. Dr. Choudharys Dental Clinic (<2km), Life Point Pathology Laboratory (<2k... Vibhav Medical (<2km), Apollo Diagnostics (<2km), Care & Cure (<2km)

ATM/Bank/Exchange

Indian Bank (<0.5km), Central Bank of India-Hinjewadi (<0... Bank of Baroda (<0.5km), Canara Bank-Hinjewadi (<0.5km), State Bank of India-Sbiintouch (<0.5k.. Idbi Bank (<0.5km), HDFC Bank (<0.5km), Kotak Mahindra Bank (<1km), Bandhan Bank (<1km), Bandhan Bank-Hinjewadi (<1km), ICICI Bank (<1km), Bank of Baroda-Mann (<1km), Indian Overseas Bank-Hinjewadi (<1... Indian Overseas Bank (<1km), [more...](#)

Locality Reviews

Hinjewadi, Pune

2800 of Acre of IT Park  
300+ Software Companies  
3 Lakhs+ employees  
Very well connected to developed areas like Aundh, Baner, Wakad and Pimple Saudagar  
Easy Access to Mumbai Expressway  
Planned Ring Road and Metro Station nearby  
Presence of many Renowned builders like Paranjpe, Puranik, Xrbia, Kolte Patil and Hiranandani to name a few  
Ideal place for land Investment  
**Pros:**  
■ *Fastest Developing Area in Pune*  
■ *Close Proximity to Mumbai*  
■ *Presence of renowned builders*  
**Cons:**  
■ *Traffic at peak times*  
Posted: Jul 31, 2020 by [Benchmark Developers \(Benchmark Developers\)](#)

Hinjewadi is the prime location with great transport connectivity. Walking distance from jw marriott , xion mall, Vivanta by Taj. Also there are many food chains nearby.  
**Pros:**  
■ *Best for IT Hub crowd*  
■ *Excellent for transportation*  
■ *No heavy traffic*  
Posted: May 25, 2019 by Smruti urade

Good locality, near bus stand, tech mahendra. Opposite TCS,  
**Pros:**  
■ *Good view of Mountain*  
Posted: Apr 20, 2017 by Datta Pradhan

Hinjewadi is going to become an important hub due to its proximity to the Mumbai Pune highway, and containing various top companies. Hence residential areas will remain constantly in demand.  
**Pros:**  
■ *IT hub*  
■ *Proximity to the Mumbai-Pune highway*  
■ *A quiet place: meaning close to hills*  
**Cons:**  
■ *Cut-off from the heart of Pune*  
■ *Nightlife yet to take-off*  
■ *Schools are not yet many (for being able to choose)*  
Posted: Oct 17, 2013 by Sarbani Belur

Hinjewadi has one of the biggest IT BT park in India changing rural face of Pune. Residential real estate is also increasing as major players from real estate are coming with the huge townships.  
**Pros:**  
■ *Developing area*  
■ *IT Park*  
**Cons:**  
■ *Not proper internal roads*  
Posted: Jul 6, 2013 by Pavan Ashtekar

Hinjewadi is Maharashtra's largest IT Park and situated very near to Pune-Mumbai Expressway. It is nestled in the heart of Sahyadri hills. Thus gives it a heaven like look in the monsoons. Major IT Companies have mega campuses here like IBM, Wipro, TCS, Infosys, Barclays, ATOS, Persistent and Mind Tree. There was no residential properties in this area 3-4 years back. That gave rise to the property prices of near by areas like Wakad and Pimple Saudagar but the techies those who have purchased flats or lives on rent in these areas has to fight with the menace of traffic in Hinjewadi Area. Recently MIDC has given permission to build residential blocks in this area. Now it boasts of famous townships like Megapolis and Blue Ridge. These township not only offers world class living but also saves

the commuting time of techies.Hence they can spend more time with their families.

**Pros:**

- *Mega IT Parks.*
- *Cool Climate.*
- *Job Opportunities.*

**Cons:**

- *If you are not staying in Hinjewadi, then traffic is an issue.*

Posted: Apr 18, 2013 by Ankit Jain

Hinjewadi, Pune is rated 7 out of 10 based on 6 user reviews.

Disclaimer: The reviews are opinions of PropertyWala.com members, and not of PropertyWala.com.

Explore

[Similar Properties](#)

[Properties in Hinjewadi, Pune](#)

[Projects in Pune](#)

[Brokers in Pune](#)

More Information

Report a problem with this listing

Is this property no longer available or has incorrect information?

[Report it!](#)

**Disclaimer:** All information is provided by advertisers and should be verified independently before entering into any transaction. You may visit the relevant RERA website of your state to verify the details of this property. PropertyWala.com is only an advertising platform to help connect buyers and sellers and is not a party to any transactions, nor shall be responsible or liable to resolve any disputes between them.