

## Shalimar Garden Bay - Ghaila, Lucknow



### Spacious Apartments with Luxury Features

Shalimar Garden Bay is presented by Shalimar Group at Ghaila, IIM Road, Lucknow offers residential project that host 2, 3, 4 and 5 BHK apartments with good features

- Project ID: J290092911
- Builder: Shalimar Group
- Location: Shalimar Garden Bay, IIM Road, Ghaila, Lucknow - 226201 (Uttar Pradesh)
- Completion Date: Dec, 2018
- Status: Completed

### Description

**Shalimar Garden Bay** by Shalimar Group located at Ghaila, IIM Road, Lucknow. The project is spread over 1333 - 2914 sq.ft. comprising of 2, 3, 4 and 5 BHK apartments. The project is equipped with key amenities including fire safety systems, gymnasium, clubhouse etc. & well connected with other parts of city and has all the basic utilities.

**RERA ID** : UPRERAPRJ9203

#### Amenities :

- Gym Health Facilities
- Indoor Games
- Play Area
- Swimming Pool

**Shalimar Group**, a well recognized name in real estate business, made an entry in this field in 1985 from Lucknow, initially known as SAS Group. It has grown from strength to strength setting benchmarks for quality standard innovating in style and technology that captured the attention of discerning customers. Highly visible buildings constructed under its banner, epitomized excellence and redefined luxurious lifestyles which was once associated with Lucknow Nawabi culture.

### Features

#### Security Features

- Security Guards ■ Electronic Security
- Intercom Facility ■ Fire Alarm

#### Interior Features

- Feng Shui / Vaastu Compliant

#### Exterior Features

- Reserved Parking ■ Visitor Parking

#### Maintenance

- Maintenance Staff ■ Water Supply / Storage
- Boring / Tube-well ■ Rain Water Harvesting
- Waste Disposal ■ RO System ■ Water Softner

#### Other features

- 73 acres Well Gted Township in Lucknow

#### Lot Features

- Private Terrace ■ Balcony ■ Private Garden
- Park Facing

#### Interior

- Marble Flooring ■ Fly Proofing

#### Recreation

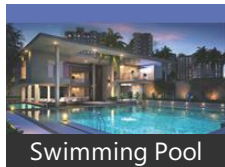
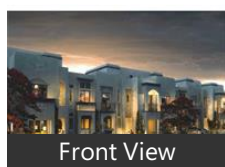
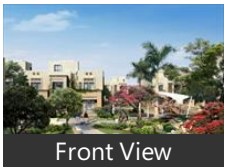
- Swimming Pool ■ Park ■ Fitness Centre / GYM
- Club / Community Center

#### General

- Power Back-up ■ Lifts

### Gallery

#### Pictures



### Floor Plans



Master Plan



Floor Plan A



Floor Plan B



Floor Plan C



Location Map

## Location

## Landmarks

### Recreation

Bara Imambara (<9km), Chhota Imambara (<8km), Indira Gandhi Planetarium (<10km), BUDDHA PARK (<10km), Residency (<11km), BHULBHULAIYA (<9km), Rajajipuram Gol Chauraha Road Park.. PVR Cinema-Saharaganj Mall (<14km. Joggers Park (<7km), Shri Buddheswhar Mahadev Mandir ... Satkhanda (<8km), Shish Mahal (<8km), Lucknow Nagar Nigam Park-Jankipu... Jankipuram Vistar Park (<8km), Sector-5 Park (<9km)

### Landmark/Attraction

Juma Masjid (<8km), MUSA BAGH (<5km), Clock Tower (<8km), AMJAD ALI SHAH, Jama Masjid Lalbagh (<14km), DARUL ULOOM NADWATUL ULMA (... DARGAH HAZRAT ABBAS (<9km)

### Hotel

Hotel Vijay Paradise (<12km), Hotel Clarks Avadh-8 M G Marg (<12.. Royal Inn (<13km), Hotel India Awadh (<14km), Sandstone Inn (<10km), Hotel Uday Raj Palace (<12km), Sapna Clarks Inn (<12km), Golden Orchid-Nirala Nagar (<11km), The Heritage Hotel and Resort (<12k... Nawab Hotel-Husainabad (<9km)

### Restaurant & Shops

Novelty (<11km), Vishal Mega Mart (<13km), Super Stockiest (<9km), Erma CD Lab & Download (<13km), Agam Jewelers (<10km), Shyam Swad (<11km), Shree Mohan Bhog Dugdh Bhandar (... Bombay Surat Saree Mela (<13km), Seva Chicken (<9km), Panna Lal Aggarwal (<9km)

### Shopping Centre

Saharaganj Mall (<13km), Bhawani Bazaar (<9km), Sahara Ganj Mall-Gate No 3 (<13km), New Pratap Market (<13km), Sahara Ganj Mall-Gate No 1 (<13km)

### Hospitals & Clinics

Reza Medical Centre (<12km), Seva Hospital & Research Centre (<8... Pawar, Ujala Nursing Home & Trauma Cent... Krishna Medical Centre (<13km), Kesar Medical Hall (<9km), Patanjali Arogya Kendra (<9km), Icon Hospital (<10km), Awadh Nursing Home (<10km), Tandon Clinic (<11km), Jagrani Hospital (<12km), Sarkar Diagnostics (<13km), Dubai Opticals (<13km), Seva Hospital & Research Centre-ER ... Sushrut Hospital (<8km), Devki Hospital (<9km), KgmU-Gate No 26 (<9km), Ceragem (<9km), Human Cure Clinic & Homeopathic ... Aprajita Hospital (<10km)

### Public Transport

Alam Nagar Railway Station (<13km), Badshahnagar Railway Station (<14k... Kaiserbagh Bus Stand (<12km), Lucknow City Railway Station (<11km. Mohibullapur Railway Station (<8km)

### Educational Facility

Career Inst of Medical Sci & Hosp (<...

### ATM/Bank/Exchange

Bank of Baroda-Roshnabad Branch (... State Bank of India (<14km), Canara Bank (<8km), Icici Bank-Vikas Nagar (<11km), Allahabad Bank-Rajajipuram (<12km... Bank of India (<9km), HDFC Bank Lucknow Aliganj Branch... Central Bank of India-E Block Rajajip... Bank of Baroda (<8km),

Jammu & Kashmir Bank-Raniganj (<... Punjab & Sind Bank-Hazaratganj (<1.. Bank of Maharashtra (<9km), Allahabad Bank-K. G. M. U C. S. M Un. Corporation Bank (<9km), Punjab National Bank (<9km)

#### Building

C. S. I. R. Scientist Apartment and Ho.. Eldeco Towne (<5km), Rohit Bhawan (<14km), Rdso Colony Manak Nagar (<9km)

#### Business & Services

Ram Dharam Kata (<11km), C. G. & Company (<13km), Eveready Industries India (<13km)

#### Taxi Stand

New Tempo Stand-Rajajipuram (<12... Taxi Stand-Nishatganj (<13km)

#### Petrol Station

Bharat Petroleum (<8km), Hindustan Petroleum (<9km)

#### Museum

Regional Science City (<9km)

\* All distances are approximate

## Properties

### Properties available in 'Shalimar Garden Bay'

#### 2 Bedroom House for sale in Shalimar Garden Bay, IIM Road. 72.3 lakhs



123.84 SqMeters Independent House @ Rs.58382/SqMeter

ID: P80789223 — Posted: Jan 20 by [Raj agarwal](#)

House/Villa in Shalimar Garden Bay, Lucknow (Shalimar Garden Bay)

Shalimar garden bay in iim road, lucknow by shalimar corp and ksm bashir mohammad and sons is a residential project. The project offers villa, apartment and land with perfect combination of contemporary architecture and features to provide comfortable living. The villa, apartment and land ... [more details](#)

#### 3 Bedroom Flat for sale in Shalimar Garden Bay, IIM Road a... 55 lakhs



134.71 SqMeters Apartment @ Rs.40828/SqMeter

ID: P60307892 — Posted: Jan 20 by [Raj agarwal](#)

Ready to move 3BHK Apartment in Shalimar Garden Bay (Shalimar Garden Bay)

Shalimar Garden Bay offers 3 BHK flats in IIM Road, Lucknow. These are a ready to move flats. There are a total of 11 towers in the project. The project is a nicely designed and offers an excellent infrastructure to the residents. It spreads across a super built-up area of 1450.0 sq. ft. ... [more details](#)

#### 2 Bedroom House for sale in Shalimar Garden Bay, IIM Road. 72.3 lakhs



123.84 SqMeters Independent House @ Rs.58382/SqMeter

ID: P49273078 — Posted: Jan 18 by [Raj agarwal](#)

House/Villa in Shalimar Garden Bay, Lucknow (Shalimar Garden Bay)

Shalimar garden bay in iim road, lucknow by shalimar corp and ksm bashir mohammad and sons is a residential project. The project offers villa, apartment and land with perfect combination of contemporary architecture and features to provide comfortable living. The villa, apartment and land ... [more details](#)

## Shalimar Garden Bay News

### Expert Reviews on Shalimar Garden Bay

#### Explore

[Projects in Lucknow](#)

[Brokers in Lucknow](#)

#### More Information

#### Report a problem with this listing

Is any information on this page outdated or incorrect?

[Report it!](#)

**Disclaimer:** All information is provided by advertisers, including builders/agents/owners, or collected from publicly available sources and may not be verified under RERA. Any information provided on this website, including facts and figures, should be verified independently, including via the relevant RERA website, before entering into any transaction. PropertyWala.com is only an advertising platform to help connect buyers and sellers and is not a party to any transaction, nor shall be responsible or liable to resolve any disputes between them.