

# Industrial Building for rent in Chakan, Pune

10.4 lakhs



## 40000 Sq.Ft Industrial Shed On Lease In Chakan Pune, Ready To Move

Chakan Industrial Area, Chakan, Pune - 410501 (Maharash...

- Area: 40000 SqFeet ▼
- Facing: North
- Furnished: Unfurnished
- Lease Period: 60 Months
- Monthly Rent: 1,040,000
- Rate: 26 per SqFeet +10%
- Age Of Construction: 1 Years
- Available: Immediate/Ready to move

## Advertiser Details

### Sai Properties

**Hemant Arude**

Owner/Proprietor

Chakan, Pune

Mobile: 8888514848

Phone:

Email: hemantarude@gmail.com

www.saipropertiespune.in

Sai Properties



Scan QR code to get the contact info on your mobile

[View all properties by Sai Properties](#)

## Description

**40,000 Sq.Ft Industrial Shed Factory Building available on Rent Lease in Chakan Pune, Ready to move in at prime location.**

Covered Shed:34000 sq.ft, Office:6000 sq.ft, Total plot size:2acre, Ample open space

**Specifications:** 10 Ton Capacity PEB structure, 12.8mtr height, 200 kva Power, Water, Office Space, Security cabin, total wall fencing, 5MT capacity Tremix flooring, Concrete Road around shed, Ample open space, Built as per Industrial Standards, Immediate Possession, Excellent Road access.

**Rate:** Rs.27/Sq.Ft

(Industrial shed on rent, shed lease chakan, shed rent chakan, factory lease factory rent in chakan, shed rent pune, factory rent in pune, Industrial shed on rent in pune, Industrial buiding in pune, Industrial building in chakan, best real estate agent in pune chakan, top property consultant in pune Chakan, best property agent in pune chakan)

When you call, don't forget to mention that you found this ad on PropertyWala.com.

## Features

### General

- Power Back-up

### Exterior

- Visitor Parking

### Other features

- Office Space
- Internal Concrete Roads
- Fire Sprinkler System
- Fire Hydrant System
- 10 ton Capacity PEB Structure
- 12.8mtr shed height
- Ready to move in grade A facility

### Security

- Security Guards
- Fire Alarm

### Maintenance

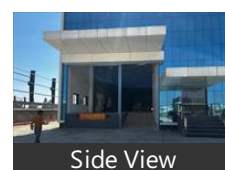
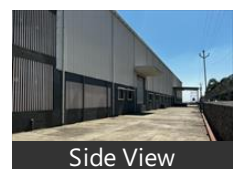
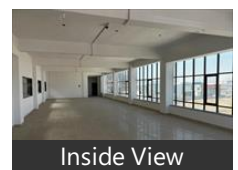
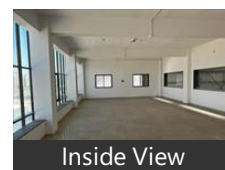
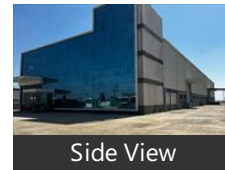
- Water Supply / Storage
- Boring / Tube-well

## Location

\* Location may be approximate

## Landmarks

## Pictures



## Restaurant & Shops

Aajji Super Market (<1km), Aryan Collection (<1km), Jay Maa Jalaun Wali Super Market (<... Sai Shraddha General Stores (<2km), Tulsi Traders (<2km), Shree Aai Mataji Super Market (<2km.. Sai Traders Kirana (<2km), Momaji Super Market (<2km), Maa Sarada Super Market (<3km), Sadguru Provision Stores (<3km), Karen Provision (<3km), Shiv Provision (<3km), Tupe Enterprises (<3km), Jay Malhar Footwear (<3km), Shri Ganesh Provision (<3km), Om Super Market (<3km), Anand Shri Super Market (<3km), Laxmi Provision Stores (<3km), Abhay Provision Store (<3km), Hanuman Traders Super Market (<3k.. Sangam Collection (<3km), Purnima Collection (<3km), Bhagvati Supermarket (<3km), Mukesh Super Market (<3km), Shri Khetlaji Super Market (<3km), Surya Boot House (<3km), Kalyani Footwear (<3km), Soham Super Market (<3km), Shri Ramdev Super Market (<3km), Vedant Footwear & General Stores (<.. Balaji Collection (<3km), Shrungar Collection & Ladies Shopp... Dipali Provision Stores & Gift House ... Rahul Tailors (<3km), Prakash Collection (<3km), Sona Saree Centre and Ladies Collect... Sandip Kirana Store (<3km), Chandrakal Shoes Center (<3km), Shital Ladies Shoppee (<3km), Shri Krushna Super Market (<3km), Waghjai Provision Stores (<3km), Durga Selection (<3km), Yashan Super Market (<3km), Shri Krushna Bag & Foot Wear (<3km. Aryan Shoe Palace (<3km), Soheshh Super Market (<3km), Kishor Shoe Palace (<3km), Gajanan Dresses (<3km), Mamata Super Market (<3km), Bhagwati Super Market (<3km), Sayli Collection and Ladies Shoppee (<. Jopadevi Super Market (<3km), Shrushti Collection (<3km), Siddhi Riddhi Kirana Stores (<3km), Railaxmi Super Market (<3km), Ganesh Super Market (<3km), Shruti General Stores (<3km), Hotel Shree Sai Niwas (<3km), Mahadev Supermarket (<3km), Pranav Enterprises (<3km), Ashapura Traders (<3km), Ram Ram Super Market (<3km), Chandakala Foot Ware (<3km), Gitai Provision Stores (<3km), Maa Sheravali Super Market (<3km)

[more..](#)

## Hosnitals & Clinics

## Locality Reviews

Chakan, Pune

Chakan has become one of a very prominent hub particularly in the area of heavy industrial works and logistics solutions, Many MNCs and corporate companies namely Hyundai, Volkswagen, GE are successfully running in chakan

### Pros:

- *Meet customer requirements in terms of building , open space, power , water , Midc roads*

### Cons:

- *Increase in industrial has led to increase in traffic, No road widening of highways to midc*

Posted: Oct 5, 2020 by [Suresh Shinde \(Finoview Consultancy Services\)](#)

Chakan is emerging suburban of Pune and developing fast. Chakan brings the huge exposure to multi-National Manufacturing companies in its bucket. Also Chakan is centre for three Metro cities like. Nashik, Pune and Mumbai have good connectivity though road and Railway

### Pros:

- *Good atmosphere*

Posted: Sep 5, 2020 by Pratik Nimodia

Chakan is the best place for business .nice people and nice property in chakan .most famous and 5 star midc in chakan .chakan is the most fastest growing city .

### Pros:

- *Best connectivity*
- *Best weather*
- *Best business place*

### Cons:

- *Traffic is big problem in chakan*
- *Mobile networks not good*
- *Small local essu*

Posted: Jul 3, 2020 by Sai Group

Chakan is fastly developing Automotive industrial hub in Pune. This place is having very good road connectivity to Pune nashik Highway and Mumbai Nagar highway. The industries in Chakan is having very good reach to Talegaon MIDC, Bhosari MIDC, Khed City SEZ and Ranjangaon MIDC too. Reputed MNC's like Mahindra and Mahindra, Mercedes , Hyundai, Tetra pak, G. E. Philips , Forbes Marshall , New holland and many more are situated in this area. With Chakan MIDC Phase-1, 2, 3 and 4 it is having private industrial area.

For those people who are searching for Residential property in Chakan I will suggest not to invest immediately as there are very few residential properties having amenities and quality construction in Chakan and those also not giving good returns after sales. Its always crowdly due to consession and poor traffic management. Clean drinking water supply is not guaranteed and in rainy season roads becomes muddy which make the place not suitable for residential use, while industrial area roads are very broads and well developed

### Pros:

- *Affordable residential place for economy class people*
- *Connectivity to all major Industrial hubs in and near pune*

### Cons:

- *Not suitable for luxury class residential place.*
- *Very crowdly at peak timing with very poor triffic management*
- *Pure drinking water is not available in ample quantity.*

Posted: Aug 14, 2019 by [Vinod Pachpute \(Versatile Services\)](#)

Descent location with good quality of construction having sufficient amenities.

### Pros:

- *Good location one of most beautiful project in chakan*

### Cons:

- *30 kms from pune city*

Posted: Oct 11, 2018 by Sachin Rane

Chakan is an Automobile industrial hub of India .The arrival of these industrial entities triggered off a

whole slew of other manufacturing establishments, both Indian and international, and established a continuous industrial growth pattern in Pune.

**Pros:**

- *Well developed area*

Posted: Jul 29, 2015 by [RAJESH KUDALE \(Pune Property Hunt\)](#)

Chakan is a very cool place even in summers, less pollution around, fresh vegetables available, calm and quiet place

**Pros:**

- *15 mins away from railway station*

**Cons:**

- *no multi speciality hospital*

Posted: Nov 1, 2014 by Uttreshwar Randive

Chakan is next destination for investors reason is that Chakan is hot sport for residential project do to Chakan MIDC and Talegaon MIDC rajgurunagar upcoming Airport , nagar road ranjangaon MIDC and so many facts increasing price there

**Pros:**

- *good location near to 4 MIDC*
- *Upcoming airport juat 5 km from chakan*
- *connectivity from pune ,nasik,mumbai and more .*

Posted: Oct 13, 2014 by [Krishna Sharma \(Krishna Group\)](#)

Chakan is a very good upcoming suburb of Pune, which is has the Auto hub of India and one of the best MIDC in Maharashtra.

**Pros:**

- *Very good industrial area.*

Posted: Jun 24, 2013 by Atul Bartakke

Chakan is upcoming and one of the fastest growing automobile hub in India. Lot many OEMs are working here like Mercedes, Mahindra, Volkswagen, Bajaj, etc. There is huge demand for Industrial Sheds on rent/lease here. The current rates for Industrial shed on rent in Chakan is Rs.22 to Rs. 26 per sq.ft. Industrial Sheds are usually available with all facilities & amenities. In the month of Jan & Feb 2013 the demands for Industrial shed/Factory on rent/lease had dropped down. But in this month i.e May 2013, the demand has cropped up. There are positive vibration in industry to setup new unit/plant in Chakan MIDC.

**Pros:**

- *Availability of skilled manpower*
- *Proximity to Airport/Port/Mumbai/National Highways*
- *Many OEMs are located in Chakan*

**Cons:**

- *Land rates are on higher side*

Posted: May 11, 2013 by [Hemant Arude \(Sai Properties Chakan\)](#)

Chakan, Pune is rated 6 out of 10 based on 10 user reviews.

Disclaimer: The reviews are opinions of PropertyWala.com members, and not of PropertyWala.com.

Explore

[Similar Properties](#)

[Properties in Chakan, Pune](#)

[Projects in Pune](#)

[Brokers in Pune](#)

More Information

Report a problem with this listing

Is this property no longer available or has incorrect information?

[Report it!](#)

**Disclaimer:** All information is provided by advertisers and should be verified independently before entering into any transaction. You may visit the relevant RERA website of your state to verify the details of this property. PropertyWala.com is only an advertising platform to help connect buyers and sellers and is not a party to any transactions, nor shall be responsible or liable to resolve any disputes between them.