

Alpine Park - Bommanahalli, Bangalore



Residential Apartments

Alpine Park is one of the popular Residential Developments in Bommana Halli neighborhood of Bangalore. It is among the Completed Projects of Alpine Housing Development Corpn Ltd.

- Project ID : J441531190
- Builder: Alpine Housing Development Corp. Ltd.
- Properties: Apartments / Flats, Residential Plots / Lands
- Location: Alpine Park, Bommanahalli, Bangalore (Karnataka)
- Completion Date: Jul, 2009
- Status: Completed

Description

Alpine Housing Development Corp. Ltd.-We build apartments for all those with an eye for detail and have responsibilities to enhance the environment, our policies for managing the environmental aspects across our business is priority no. one. Alpine constructions commitment to quality Property Development encompasses Condominiums, Apartment Buildings and Commercial Complexes. Some of the reasons why all our projects have met with immense success- ideal Locations, impeccable quality of construction, awesome amenities, and reasonable prices . Add to this the dedication of the work force and the determination of the management, and you get a property that's almost like made to order - just perfect. We have a reputation for consistently delivering high quality construction services in a timely and cost-efficient manner.

Alpine Park is one of the popular Residential Developments in Bommanahalli neighborhood of Bangalore. It is among the Completed Projects of Alpine Housing Development Corp Ltd. The landscape is beautiful with spacious 4 Blocks and over 120 Houses.

Salient Features:

- 100% Power back-up
- 24 Hours Security with Boom Barrier & video surveillance
- 24 Hours Water Supply
- Premium Multi-level club with Gym, Party Room & Indoor games etc.
- Swimming Pool
- Ample Parking Space
- Rain Water Harvesting

Features

Luxury Features

- Power Back-up ■ Lifts ■ RO System
- Water Softner

Exterior Features

- Reserved Parking ■ Visitor Parking

Maintenance

- Maintenance Staff ■ Rain Water Harvesting
- Waste Disposal

Security Features

- Security Guards ■ Electronic Security
- Intercom Facility ■ Fire Alarm

Recreation

- Swimming Pool ■ Park ■ Fitness Centre / GYM

Land Features

- Society Boundary Wall ■ Corner Plot
- Feng Shui / Vaastu Compliant
- Club / Community Center ■ Adjacent to Main Road
- Water Connection ■ Electric Connection
- Close to School ■ Close to Shopping Center/Mall

Other features

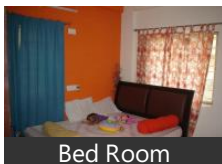
- Security / Fire Alarm ■ Private Garden / Terrace
- Lift(s) ■ Security Personnel ■ Water Storage
- Club house / Community Center
- Booking Amount: Rs. 60000
- Society Name: ALPINE PARK
- Furnish: Semifurnished ■ Possession: Immediate
- Ownership: Freehold ■ Age of Property: 5-10 Years
- Total Floors in Complex: 4
- Property on Floor: 2nd Floor

Gallery

Pictures



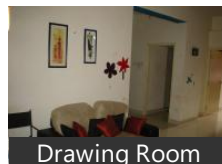
Aerial View



Bed Room



Dinning Room



Drawing Room



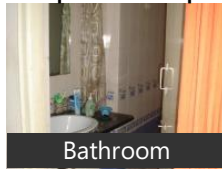
Kitchen



Living Room



Pooja Ghar



Bathroom

Location

Landmarks

Transportation

S R P Mobiles & City Taxi (<2km), S R P City Taxi (<2km), 7 Hills City Taxi (<3km), Taxi Service Station (<4km)

* All distances are approximate

Properties

Type	Area	Possession	Price *
2BHK Apartment / Flat	1100 SqFeet	-	₹ 50 lakhs
2BHK Apartment / Flat	1250 SqFeet	Within 3 Months	₹ 52 lakhs
2BHK Apartment / Flat	1307 SqFeet	Within 3 Months	₹ 50 lakhs
Residential Plot / Land	1200 SqFeet	-	₹ 5 lakhs

* Data has been collected from publicly available sources and may not be up to date.

Alpine Park News

Expert Reviews on Alpine Park

Explore

[Projects in Bangalore](#)

[Brokers in Bangalore](#)

More Information

Report a problem with this listing

Is any information on this page outdated or incorrect?

[Report it!](#)

Disclaimer: All information is provided by builders, advertisers, or collected from publicly available sources and may not be verified as per RERA guidelines. Any information provided on this website, including facts and figures, should be verified independently before entering into any transaction. PropertyWala.com is only an advertising platform to help connect buyers and sellers and is not a party to any transaction, nor shall be responsible or liable to resolve any disputes between them.

[PropertyWala.com](#) » [Bangalore Real Estate](#) » [Projects in Bangalore](#) » [Alpine Park - Bommanahalli, Bangalore](#)