

## Kalpataru Magnus - Bandra East, Mumbai



apartment with proper ventilation

Kalpataru Magnus address will be home for designer residences, ensuring comfort and well-being to its owners.

- Project ID: J398275118
- Builder: Kalpataru Limited
- Location: Kalpataru Magnus, Bandra East, Mumbai - 400051 (Maharashtra)
- Completion Date: Jun, 2024
- Status: Starting

### Description

**Kalpataru Magnus** is an under-construction project in Mumbai South West, offering 3, 4 & 4.5 bhk luxury with the blend of elegance and exclusivity. This upcoming address will be home for designer residences, ensuring comfort and well-being to its owners. Project is scheduled for possession in Jun, 2024 and will offer expansive apartments in various configurations. this project, with 31 floors each and just 250 units to offer.

RERA ID :- P51800004029

### Amenities :

- Basket Ball Court
- Club House
- Compound Covered Car Parking
- Cycling Track
- Gated Community
- Gym
- Indoor Games
- Landscaped Garden
- Outdoor games
- Play Area
- Rain Water Harvesting
- Swimming Pool
- 24Hrs Backup Electricity
- Fire Safety

Established in 1969, **Kalpataru** has built several projects in Mumbai, Thane, Pune that are today a testimony to impeccable architectural standards. It has upgraded the living standards of urban India. Today, it has global recognition with the 100 awards and accolades it has won. Fulfilling the aspirations of numerous home buyers and ensuring the timely delivery of their dream homes, and it is in this achievement that the company.

### Features

#### Luxury Features

- Power Back-up
- Lifts

#### Lot Features

- Balcony

#### Exterior Features

- Reserved Parking
- Visitor Parking
- Basement

#### Maintenance

- Maintenance Staff
- Water Supply/ Storage
- Rain Water Harvesting

#### Security Features

- Security Guards
- Fire Alarm

#### Interior Features

- Modular Kitchen

#### Recreation

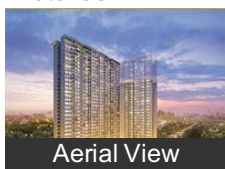
- Swimming Pool
- Park
- Fitness Centre / GYM
- Club / Community Center

#### Land Features

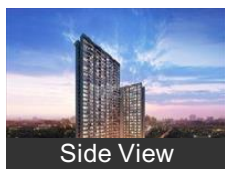
- Club / Community Center
- Adjacent to Main Road
- Water Connection
- Electric Connection
- Close to Hospital
- Close to School
- Close to Shopping Center/Mall

### Gallery

#### Pictures



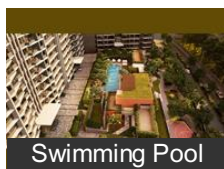
Aerial View



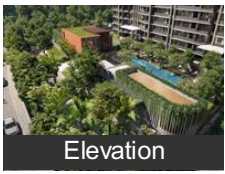
Side View



Bird View



Swimming Pool



Elevation

## Floor Plans



Floor Plan-A



Floor Plan-B



Floor Plan-C

## Location

## Landmarks

### ATM/Bank/Exchange

Yes Bank (<0.5km), Canara Bank-MCB Andheri Mumba.. Yes Bank-Mg Colony (<0.5km), Kotak Mahindra Bank Atm (<0.5km), State Bank of India (<0.5km), ICICI Bank (<0.5km), Kotak Mahindra Bank (<0.5km), Axis Bank (<0.5km), Indusind Bank-Kalanagar Bandra (. Punjab National Bank (<0.5km), State Bank of India-Bharat Diamon... Union Bank of India (<0.5km), Canara Bank (<0.5km), HDFC Atm (<0.5km), Union Bank of India-Bandra East (<. Axis Bank-Bandra East (<0.5km), Sawli Bank (<0.5km), Maharashtra State Co-Operative Ba.. Aram SC Bank (<0.5km), Small Industries Development Ban.. Corporation Bank (<0.5km), Mumbai District Central Co-op Ban.. Shamrao Vithal Co-op Bank (<0.5k.. Shinhan Bank (<0.5km), Bank of Baroda (<0.5km), Allahabad Bank (<0.5km), North Kanara GSB Company Opera.. Mumbai District Central Co-op Ban.. Uco Bank Atm (<0.5km), Uco Bank-Bandra East Kala Nagar.. Bank of India-Bandra East (<0.5km), North Kanara GSB Co op Bank-Kal.. Reserve Bank Of India (<0.5km), Bank of India (<0.5km), Indian Overseas Bank (<1km)

### Hospitals & Clinics

Dr Shanta Naik (<0.5km), Dr Sanjay Joshi (<0.5km), Mtra, Dr Rohan Patil Dental Clinic (<0.5k.. Gurunanak Hospital (<0.5km), Gurunanak Hospital-ER (<0.5km), Dr Ernest Borges Memorial Home-... Dr Ernest Borges Memorial Home ... Shri Sai Samarth Clinic (<0.5km), The Optic Plaza Be Extraordinary (<. Dr. C.M.Pujaris Hospital (<0.5km), Vijay P Karande (<0.5km), Dr P R Deshpande (<0.5km), Doctor Digikar Dental Clinic (<0.5k... Arihant Clinic (<0.5km), Vijay B Sagar (<0.5km), Ashwini Karpe (<0.5km), Dental Speciality Care (<0.5km), Dr Ashok Chaged (<0.5km), Dr Subodh Kedia (<0.5km), Suresh Clinic (<0.5km), Dr Sheilja Singh (<0.5km), Braces Plus (<1km), Eva Traders-Patanjali Chikitsalaya...

### Restaurant & Shops

Craftbar (<0.5km), Popular (<0.5km), Meena Bazar (<0.5km), 90ml Bar & Kitchen (<0.5km), Abruda Collections (<0.5km), Shri Krishna Collection (<0.5km), Ujala (<0.5km), Priyanka Dresses (<0.5km), SassyApparels - Designer Kurtis (...)

### Hotel

Sixth Sense Hospitality (<0.5km), Oyo 29226 Prime Serviced Apartme.. Jasmine - 62 (<0.5km), Hotel Aram (<0.5km), Corporate Stay BKC (<0.5km), Aram Hotel-Bandra E (<0.5km), Gagaj Home-BKC Suite (<0.5km), BKC Nest 3bhk (<0.5km), Barkat Hotel (<0.5km)

### Public Transport

Rna Complex (<0.5km), Bandra Colony (<0.5km), Administrative Building (<0.5km), Labour Court Bus Stop (<0.5km), Income Tax Department Bus Stop (. lbr Office (<0.5km), Chetna College (<0.5km)

### Shopping Centre

Aram Shopping Center (<0.5km), New Shopping Centre (<0.5km)

### Recreation

Dr Babasaheb Ambedkar Ground (... Ambedkar Park (<0.5km), Ambedkar Udyan (<0.5km),

Doctor Baba Saheb Ambedkar Gar... CityPark (<1km), Kalamandir Cinema

Landmark/Attraction

Chhabil (<0.5km)

Petrol Station

H P Gas-Ninad Gas Service (<0.5k...

\* All distances are approximate

## Properties

### Kalpataru Magnus News

- Malad West Dely S.O Pin Code

*Jul 3, 2020* - The Malad West Dely S.O Pin code is 400064 and it comes under Mumbai north west Division which is located in Mumbai district of Maharashtra State. The Malad West Dely Sub Post Office which comes ... [more](#)

- Suzuki Bike Showrooms in Thane

Suzuki sells its bikes in Thane through a comprehensive network of dealers spread across the city. Find the details of 3 Suzuki bike Showrooms & dealers nearest to your location in Thane and ... [more](#)

- KTM Bike Service Centers in Pune

*Jun 25, 2021* - PIMPLE GURAV KTM SPRING HOUSING SOCIETY, SR. NO 86/1A/4, NEXT TO DOMINO'S OPP. KALPATARU ESTATE, NASIK BANGALORE BYPASS, PIMPLE GURAV, , Pune, Maharashtra, 411027 ... [more](#)

## Expert Reviews on Kalpataru Magnus

Explore

[Projects in Mumbai](#)

[Brokers in Mumbai](#)

More Information

Report a problem with this listing

Is any information on this page outdated or incorrect?

[Report it!](#)

**Disclaimer:** All information is provided by advertisers, including builders/agents/owners, or collected from publicly available sources and may not be verified under RERA. Any information provided on this website, including facts and figures, should be verified independently, including via the relevant RERA website, before entering into any transaction. PropertyWala.com is only an advertising platform to help connect buyers and sellers and is not a party to any transaction, nor shall be responsible or liable to resolve any disputes between them.

[Home](#) » [Mumbai Real Estate](#) » [Projects in Mumbai](#) » [Kalpataru Magnus - Bandra East, Mumbai](#)