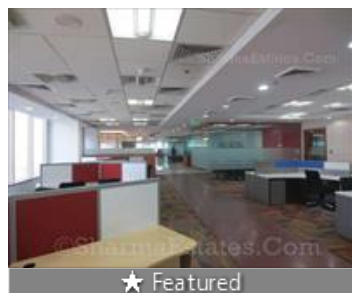


## Office Space for rent in Nehru Place, New Delhi

16.5 lakhs



Eros Corporate Tower, Nehru Place, New Delhi - 110011 ..

- Area: 10000 SqFeet ▾
- Bathrooms: Three
- Monthly Rent: 1,650,000
- Rate: 165 per SqFeet + 10%
- Available: Immediate/Ready to move

### Description

Fully furnished commercial office space is available for ready to move in, Very well furnished office having 10,000 sq. Ft. Of super built up area. One of the top corporate building in **nehru place**. It is right opposite to the **nehru place** metro station. There are enough dedicated car parking with this space in multi level car parking. The building is well equipped with all modern basic amenities like lift, Power back up, Fire safety, Security etc...

Please mention that you saw this ad on PropertyWala.com when you contact.

## Features

### Other features

- Builtup Area: 10000 Sq.Ft. ■ Immediate possession
- 1 to 5 years old ■ Society: Eros Corporate Tower

## Location

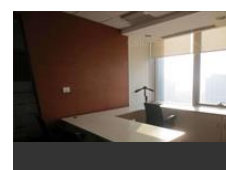
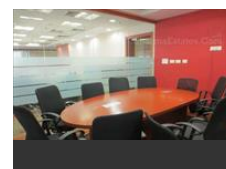
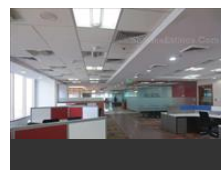
## Advertiser Details



Scan QR code to get the contact info on your mobile

[View all properties by Sharma Estates](#)

## Pictures



\* Location may be approximate

## Landmarks

### Nearby Localities

[Sant Nagar](#), [East Of Kailash](#), [Kalkaji](#), [Greater Kailash I](#), [Greater Kailash II](#), [Alaknanda](#), [Friends Colony East](#),  
[Vinoba Puri](#), [Greater Kailash II](#), [Greater Kailash Encl II](#), [Sant Nagar](#), [Pamposh Enclave](#), [Kailash Colony](#),  
[East Of Kailash](#), [Kalkaji](#), [Greater Kailash I](#), [Greater Kailash III](#), [Alaknanda](#), [Greater Kailash II](#), [Greater Kailash Encl II](#),  
[Hemkunt Colony](#), [Sant Nagar](#), [Garhi](#), [Nehru Enclave](#), [Pamposh Enclave](#), [Kailash Colony](#), [East Of Kailash](#), [Kalkaji](#),  
[Greater Kailash I](#), [Greater Kailash III](#), [Hemkunt Colony](#), [Kailash Colony](#), [East Of Kailash](#), [Kalkaji](#), [Greater Kailash I](#),  
[Greater Kailash III](#), [Alaknanda](#), [Greater Kailash II](#), [Greater Kailash Encl II](#), [Amar Colony](#), [Hemkunt Colony](#),  
[Kailash Colony](#), [East Of Kailash](#), [Kalkaji](#), [Greater Kailash I](#), [Greater Kailash III](#), [Alaknanda](#), [Greater Kailash II](#),  
[Greater Kailash Encl II](#), [Amar Colony](#), [Hemkunt Colony](#), [Nehru Enclave](#), [Kailash Colony](#), [East Of Kailash](#), [Kalkaji](#),  
[Greater Kailash I](#), [Greater Kailash III](#), [Alaknanda](#), [Greater Kailash II](#), [Greater Kailash Encl II](#), [Hemkunt Colony](#),  
[Kailash Colony](#), [East Of Kailash](#), [Kalkaji](#), [Greater Kailash I](#), [Alaknanda](#), [Greater Kailash II](#), [Greater Kailash Encl II](#),  
[Amar Colony](#), [Chittaranjan Park](#), [Hemkunt Colony](#), [Kailash Colony](#), [East Of Kailash](#), [Kalkaji](#), [Greater Kailash I](#),  
[Alaknanda](#), [Greater Kailash II](#), [Greater Kailash Encl II](#), [Amar Colony](#), [Chittaranjan Park](#), [Kailash Colony](#),  
[East Of Kailash](#), [Kalkaji](#), [Greater Kailash I](#), [Alaknanda](#), [Greater Kailash II](#), [Greater Kailash Encl II](#), [Amar Colony](#),  
[Chittaranjan Park](#), [Ishwar Nagar](#), [Kailash Colony](#), [East Of Kailash](#), [Kalkaji](#), [Greater Kailash I](#), [Alaknanda](#),  
[Greater Kailash II](#), [Greater Kailash Encl II](#), [Ishwar Nagar](#), [Panchsheel Enclave](#), [Laipat Nagar-II](#), [East Of Kailash](#),  
[Greater Kailash I](#), [Greater Kailash II](#), [Greater Kailash Encl II](#), [Amar Colony](#), [Masjid Moth](#), [Chittaranjan Park](#),  
[Ishwar Nagar](#), [Panchsheel Enclave](#), [Laipat Nagar-II](#), [Kailash Colony](#), [East Of Kailash](#), [Greater Kailash I](#), [Alaknanda](#),  
[Greater Kailash II](#), [Greater Kailash Encl II](#), [Ishwar Nagar](#), [Panchsheel Enclave](#), [Laipat Nagar-II](#), [Laipat Nagar](#),  
[Kailash Colony](#), [East Of Kailash](#), [Greater Kailash I](#), [Alaknanda](#), [Greater Kailash II](#), [Greater Kailash Encl II](#), [Ishwar Nagar](#),  
[Panchsheel Enclave](#), [Laipat Nagar-II](#), [Laipat Nagar](#), [East Of Kailash](#), [Greater Kailash I](#), [Alaknanda](#), [Greater Kailash II](#),  
[Greater Kailash Encl II](#), [Amar Colony](#), [Ishwar Nagar](#), [Panchsheel Enclave](#), [Laipat Nagar-II](#), [Laipat Nagar](#),  
[East Of Kailash](#), [Greater Kailash I](#), [Alaknanda](#), [Greater Kailash II](#), [Greater Kailash Encl II](#), [Amar Colony](#), [Ishwar Nagar](#),  
[Panchsheel Enclave](#), [Laipat Nagar-II](#), [Laipat Nagar](#), [East Of Kailash](#), [Greater Kailash I](#), [Alaknanda](#), [Greater Kailash II](#),  
[Greater Kailash Encl II](#), [Amar Colony](#), [Ishwar Nagar](#), [Panchsheel Enclave](#), [Laipat Nagar-II](#), [Laipat Nagar](#),  
[East Of Kailash](#), [Greater Kailash I](#), [Alaknanda](#), [Greater Kailash II](#), [Greater Kailash Encl II](#), [Amar Colony](#), [Ishwar Nagar](#), [Panchsheel Enclave](#), [Laipat Nagar-II](#), [Laipat Nagar](#), [more](#)

## Locality Reviews

Nehru Place, New Delhi

Nehru Place is famous Computer Market with lots of Business Centres. It is completely commercial Market. Flats here are easily rented out for Commercial purpose. Maintenance is done well by the Flat Owners' Association.

### Pros:

- *Renting out is easy as it is completely Commercial Market.*

Posted: Oct 23, 2019 by Santosh Sardana

Nehru Place is one of the busy market of Delhi. Renowned in Asian software market.

### Pros:

- *Good Accesibility*

### Cons:

- *Very crowded market*

Posted: Jun 29, 2015 by [Sanjit Kumar \(Ksd Land Trades\)](#)

Centrally located with good connectivity to Connaught Place, Noida, Gurgaon as well as Faridabad by Metro.

### Pros:

- *Metro Station*
- *Easy Acess to Delhi / NCR*
- *Corporate and IT Hub*

Posted: Sep 4, 2013 by Naveen Panwar

Nehru Place, New Delhi is rated 8 out of 10 based on 3 user reviews.

Disclaimer: The reviews are opinions of PropertyWala.com members, and not of PropertyWala.com.

## Explore

[Similar Properties](#)

[Properties in Nehru Place, New Delhi](#)

[Projects in New Delhi](#)

[Brokers in New Delhi](#)

## More Information

## Report a problem with this listing

Is this property no longer available or has incorrect information?

[Report it!](#)

**Disclaimer:** All information is provided by advertisers and should be verified independently before entering into any transaction. You may visit the relevant RERA website of your state to verify the details of this property. PropertyWala.com is only an advertising platform to help connect buyers and sellers and is not a party to any transactions, nor shall be responsible or liable to resolve any disputes between them.