

Conscient Elevate Reserve - Sector-62, Gurgao..



well equipped with all high-end amenities

Conscient Elevate Reserve is located in the heart of Sector 62, Gurgaon offers 3&4 BHK apartments with various facilities.

- Project ID: J292414011
- Builder: Conscient Infrastructure Pvt Ltd
- Location: Conscient Elevate Reserve, Sector-62, Gurgaon - 122102 (Haryana)
- Completion Date: Dec, 2027
- Status: Started

Description

Conscient Elevate Reserve is located in the heart of Sector 62, Gurgaon offers 3&4 BHK apartments with 2745-3395 sqft. The project is spread over an area of 5.5 acres of land. It consists of 2 high-rise buildings with 240 units. This neighborhood is ideal, just a short drive from retail shops, restaurants, educational institutions, shopping centers, and the IT Hub.

RERA ID: HRERA 101 of 2023

Amenities

- Jogging Track
- Children's Play Area
- Gymnasium
- Multi-level Car Parking
- Swimming Pool
- Indoor Games Room
- Mini Theatre
- 24-hour CCTV
- Multi-purpose hall
- VRV Air-Condition

Conscient Infrastructure Pvt Ltd aims to create what we uniquely can give to the world, not just buildings or homes, but a lifestyle that epitomizes soulful living. Getting the basics of creation right, upholding high standards of delivery and reliability, and creating more value than profits has helped us achieve what we most believe in - Excellence.

Features

Luxury Features

- Power Back-up
- Centrally Air Conditioned
- Lifts
- RO System
- Water Softner
- High Speed Internet

Security Features

- Security Guards
- Electronic Security
- Intercom Facility

Lot Features

- Balcony

Interior Features

- Woodwork
- Modular Kitchen
- Feng Shui / Vaastu Compliant

Exterior Features

- Visitor Parking

Recreation

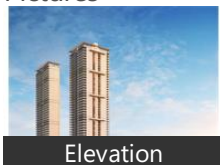
- Swimming Pool
- Park
- Fitness Centre / GYM
- Club / Community Center

Maintenance

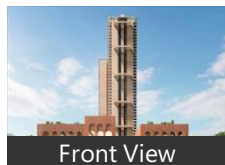
- Maintenance Staff
- Water Supply / Storage
- Rain Water Harvesting

Gallery

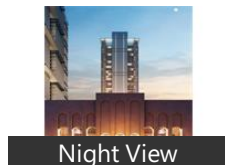
Pictures



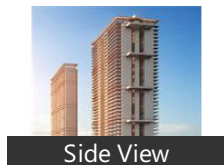
Elevation



Front View



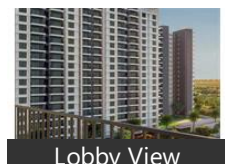
Night View



Side View



Inside View



Lobby View



Swimming Pool

Floor Plans



Location Map



Floor Plan

Location

Landmarks

Restaurant & Shops

Yadav General Store (<0.5km), S. K. Footwear & Garments (<0.5km), S. K. Music & Garments (<0.5km), Sandhya Fashion Point (<0.5km), Anshika Boot House (<0.5km), Naksh Fashion (<0.5km), Om General Store (<0.5km), Vaishnavi General Store (<0.5km), Jugan General Store (<0.5km), Sonu Cotton Mattress (<0.5km), Krishan General Store (<1km), Sania General Store (<1km), Rahul General Store (<1km), Dukaan (<1km), Tekram Store (<1km), Ma Kali Footwear & Garments (<1km.. Guruji Fashion Hub (<1km), Baba Mohan Ram Garment (<1km), Raghu General Store (<1km), Shivam General Store (<1km), Dev General Store (<1km), Nishant General Store (<1km), Livya Fashion Hub (<1km), Lokesh General Store (<1km), Tej General Store (<1km), Lalit General Store (<1km), Pradyot General Store (<1km), Polr Athleisure Sports (<1km), Gentleman Cut & Stich (<1km), Balloon 76 the Party Shop (<1km), W & E (<1km), Art & Artifacts (<1km), Club Florence Restaurant (<1km), Gentlemen (<1km), Rang Riwaaz (<1km), Letsdressup (<2km), Guardian (<2km)

Petrol Station

Indian Oil (<0.5km), Hindustan Petroleum (<1km)

Hospitals & Clinics

Roy Clinic (<0.5km), Medwin Medical Centre (<0.5km), Aman Optical (<0.5km), Million Dollar Smile Dental Clinic (<1.. The Homeopathic Clinic (<1km), Swastik Hospital (<1km), Apex Plus Hospital (<1km), Janta Clinic (<1km), Health Creation Clinic (<1km), Athina Healthcare (<1km), Lal Pathlabs Blood Test (<1km), Sania Clinic (<1km), Excellence Physiotherapy (<1km), Dr. Harnarayan Singh Clinic (<1km), Geetanjali Healthcare Solution (<1km.. Dr Neeraj Kumar Clinic (<1km), Dr Ishwin, Magical Morphers Skin Clinic (<1km), Skyn Stories (<1km), SRL Diagnostics (<1km), Mandhyan Care (<1km), Dr Neha Sood Clinic (<1km), DR.Lal Path Lab & Diagnostic Solutio.. Dr Saed Varis Clinic (<1km), Physio Drive Physiotherapy Clinic (<... Lenskart.Com at Sector 63 Gurugram... Apollo Diagnostics (<1km), Glasses Direct (<1km), Elite Vision (<1km), Hemanto Clinic (<1km), Dr Somendra Shukla Clinic (<2km), DR.Ratnav Ratan-Pediatric Orthopae... Pratiksha Hospital (<2km), Pratiksha Hospital-ER (<2km), Dr Sanjeev Chaudhary Clinic (<2km), Dr Saurabh Joshi Urologist & Kidney ... Dr Rajesh Verma Clinic (<2km), Dr. Mohit Khirbat Clinic (<2km), Dr Jaideep Diagnostic Centre (<2km), Akash Hospital-ER (<2km), Akash Hospital (<2km), Dr Jyoti Lakhani (<2km), Dr Rajesh Pal (<2km), Dr A K Mathur (<2km), Dr Vinita Sherwal (<2km)

Hotel

Deepak Hotel (<0.5km), Taj Hotel (<1km), Heart of City (<1km), Lemon Tree Hotel (<2km)

ATM/Bank/Exchange

Indian Bank (<1km), HDFC Bank-Sector 62 (<1km), Axis Bank (<1km), ICICI Bank (<1km)

Wine & Spirits

Laxmi Wine Shop (<1km), Oakwood Creek Wine and Beer Shop...

Department Store

Health & Beauty Mart (<1km)

Shopping Centre

Florence Triangle (<1km), Trump Pets (<1km)

Public Transport

Sector 55 Bus Station (<1km)

* All distances are approximate

Properties

Conscient Elevate Reserve News

■ Honda Elevate price in Gurgaon

Sep 8, 2023 - Honda Elevate price for the base model starts at ₹ 13.62 lakh and the top model price goes upto ₹ 18.72 lakh (on-road Gurgaon).The Honda Elevate on road price in Gurgaon for Petrol engine ... [more](#)

■ Honda Elevate On Road Price in Gurgaon

Sep 7, 2023 - What is the ex-showroom price of the top petrol variant of Honda Elevate in Gurgaon? The ex-showroom price of the top petrol variant of Honda Elevate is 16.51 Lakh in Gurgaon. What is the price of ... [more](#)

■ What is Reserve Funds?

May 31, 2021 - One way to get instant access to money on a rainy day is through reserve funds. Let's try to define reserve funds, find out how it works, and check out its benefits. A reserve fund is a highly liquid ... [more](#)

■ Honda Elevate Offers & Discount in Gurgaon

Mar 2 - Get all exclusive Honda Elevate offers from partner dealers in Gurgaon with exchange bonus, attractive finance rates and add ons like extended warranty. Elevate Models Offers Elevate ZX CVT Dual ... [more](#)

■ What is 'Reserve Ratio'

Oct 9, 2023 - Definition: Also known as Cash Reserve Ratio, it is the percentage of deposits which commercial banks are required to keep as cash according to the directions of the central bank. Description: The ... [more](#)

■ Honda Elevate Colours

Sep 4, 2023 - Honda Elevate is available in 10 different colours - Platinum White Pearl, Lunar Silver Metallic, Platinum White Pearl With Crystal Black Pearl, Golden Brown Metallic, Obsidian Blue Pearl ... [more](#)

Expert Reviews on Conscient Elevate Reserve

Explore

[Projects in Gurgaon](#)

[Brokers in Gurgaon](#)

More Information

Report a problem with this listing

Is any information on this page outdated or incorrect?

[Report it!](#)

Disclaimer: All information is provided by advertisers, including builders/agents/owners, or collected from publicly available sources and may not be verified under RERA. Any information provided on this website, including facts and figures, should be verified independently, including via the relevant RERA website, before entering into any transaction. PropertyWala.com is only an advertising platform to help connect buyers and sellers and is not a party to any transaction, nor shall be responsible or liable to resolve any disputes between them.

[Home](#) » [Gurgaon Real Estate](#) » [Projects in Gurgaon](#) » [Conscient Elevate Reserve - Sector-62, Gurgaon](#)