

## Master Orchard Estate - Madhyam Gram, Kolk...



### Matching your desire for a perfect home

Master Orchard Estate by Master Properties Pvt Ltd at the very prime location of Madhyamgram, Doharia in Kolkata offers residential project that host 2 and 3 bhk apartments in various sizes.

- Project ID: J918947981
- Builder: Master Properties Pvt Ltd
- Location: Master Orchard Estate, Doharia, Madhyam Gram, Kolkata - 700132 (West Bengal)
- Completion Date: Dec, 2020
- Status: Started

## Description

**Master Orchard Estate** by Master Properties Pvt Ltd at the very prime location of Madhyamgram, Doharia in Kolkata offers residential project that host 2 and 3 bhk apartments in the size ranges in between 935 to 1537 sqft. : The amenities in the project include Drainage and Sewage Treatment, Multi-purpose Hall, 24 Hrs Backup Electricity, CCTV Cameras. The project comes with many schools, colleges, hospitals, recreational areas, parks and many other facilities nearby.

**RERA ID: HIRA/P/NOR/2019/000400**

### Amenities:

- Open Car Parking
- Multipurpose Hall
- Video Door Security
- 24X7 Water Supply
- CCTV
- Storm Water Drains
- Fire Fighting System
- Sewage Treatment Plant
- Rain Water Harvesting
- Yoga/Meditation Area
- Community Hall
- Car Parking
- Intercom
- Club House
- Landscaping & Tree Planting
- Indoor Games
- 24x7 Security
- Children's Play Area
- Lift(s)
- Gymnasium
- Swimming Pool
- Vaastu Compliant
- Power Backup

**Master Properties** was incorporated in the year 2000, with a vision to design the landscape of housing projects of Kolkata. It offers residential properties with incredible design and innovative features. It has a team of dynamic professionals who have the latest technical expertise. The group focuses on building long-term relationship with its buyers. Some of its developments are Master Orchard Estate, Master Sonny Heights, Master Queens Manor and Master Susheila Apartment.

## Features

### Luxury Features

- Power Back-up
- Lifts
- High Speed Internet

### Lot Features

- Balcony

### Recreation

- Swimming Pool
- Park
- Fitness Centre / GYM
- Club / Community Center

### Security Features

- Security Guards
- Intercom Facility

### Exterior Features

- Reserved Parking

### Maintenance

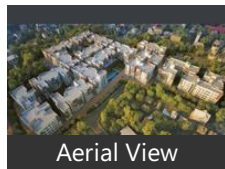
- Maintenance Staff
- Rain Water Harvesting

## Gallery

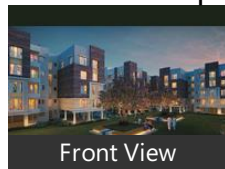
### Pictures



Elevation

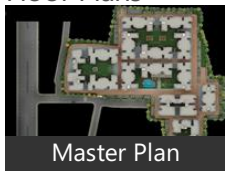


Aerial View



Front View

## Floor Plans



Master Plan



Floor Plan A



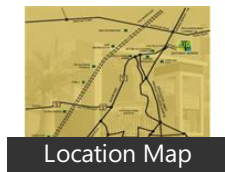
Floor Plan B



Floor Plan C



Floor Plan D



Location Map

## Location

## Landmarks

### Public Transport

Madhyamgram Railway Station (<3km), Biman Bandar Railway Station (<7km), Sodpur Railway Station (<13km), Belgharia Station (<12km), Nagar Bazar Bus Station (<12km), Kaikhali Bus Stop (<9km), New Barrackpur More Bus Stop (<1km), Barasat Bus Station (<6km), Barasat Junction (<7km), Madhyamgram Chourasta Bus Stop ... Netaji Subhash Chandra Bose Interna.. Karea Kadambagachhi Railway Station.. Raja Enterprise New Barrackpore (<3km), Hridaypur Railway Station (<4km), Bisharpara Kotalia Railway Station (<.. Baranagar (<13km), Dum Dum Cantonment Railway Station... Colony Mor Bus Stop (<7km), Bamangachi Station (<12km), Barasat Local Station (<7km), Netaji Subhash Chandra Bose Interna..

### Hotel

Hotel Heritage (<11km), Airport City Hotel (<6km), Swissotel Kolkata (<10km), Hotel O2 VIP (<9km), Swagatam Inn (<12km), O2 Hotel (<8km), Celesta (<11km), Orbit Hotel (<11km)

### Shopping Centre

Sun City Mall (<6km), City Mall (<5km), Nimta Mahendra Babu Bazar (<10km), Natun Bazar (<2km), Pathanpur Natun Bazar (<8km)

### Restaurant & Shops

Sher-E-Punjab (<3km), Bidyapith (<7km), Dolphin Restaurant (<2km), Lokenath Medical (<3km), Raja Rani (<12km), Blackberry (<10km), Dakbangla More F L Off Shop (<5km), Nokia Priority (<6km), Nova Times and Electronics (<6km), Saha Textile (<6km), Lal Mohan (<6km), Microsoft Communication (<6km), Surge (<7km), Fashsion Beauty (<7km), Kala Selection (<12km), Big Bazaar (<7km), Selection (<13km), Birati F L Off Shop (<8km), Kadambagachi F. L. Off Shop (<8km)

### Hospitals & Clinics

Madhyamgram Municipal Health Ce... Apollo Medico (<11km), Renaissance Hospital (<10km), Jubilant Kalpataru Hospital-ER (<4km), Care & Cure Hospital (<6km), North 24pqs Jela Hospital-ER (<7km), Barasat Hospital-ER (<7km), Eco Hospital-ER (<7km)

### Business & Services

City Centre New Town (<10km), Diamond Plaza (<13km)

### Recreation

Eco Tourism Park (<12km), Jaya Cinemas-City Mall (<5km), Rose Valley Park (<8km), Arti Theatre-Suncity Mall (<6km), Inox (<10km), PVR Cinemas-Diamond Plaza (<13km)

## Building

Arnab (<11km), Eco Friendly Non It Business Park (<1.. Gitanjali (<6km), Loknath Park (<10km), Siddha Town (<8km), Ramesh Apartment (<9km), Akanksha (<10km), Haldiram Enclave (<10km), Rana (<5km), Karunamoye (<6km), Monikhola Narayanpur (<6km), Anila Apartment (<6km), Sourav Ganguly Avenue (<7km)

## Accommodation

Oyo 8234 Swagatam International (<... Lodge Titan (<7km), Om Lodge-Dum Dum (<8km)

## Landmark/Attraction

Durganagar (<8km), Kala Mandir (<13km)

## Museum

Mother

## ATM/Bank/Exchange

Indian Overseas Bank (<8km), Canara Bank (<3km), Indusind Bank (<9km), State Bank of India (<14km), Central Bank Of India (<6km), Central Bank of India-Rajarhat (<6km.. Axis Bank-Nabapally (<6km), Axis Bank (<7km), Indian Overseas Bank-Baranagar (<1...

\* All distances are approximate

## Properties

### Master Orchard Estate News

#### ■ Auroville board to implement master township plan amid row

*3 days ago* - The Governing Board of the Auroville foundation here has decided to expeditiously push for implementing the Auroville Township Master plan despite opposition from the residents. The foundation ... [more](#)

#### ■ Lady Psychologist in Kolkata

*Apr 3, 2017* - 2nd Floor, P171/27, Picnic Garden Road, Vip Bazaar Off Emby pass road, Opposite Vip Bazaar Auto Stand, House Opposite Green Leaf School, Kolkata E.M Bypass, Kolkata ... [more](#)

#### ■ Home Sales In Kolkata Jump 62 Percent In 2021: Report

*21 days ago* - "Around 64 per cent of the total primary market sales of 2021 in Kolkata was achieved in H2 (July-December) alone, as two per cent government rebate on stamp duty for property registrations played ... [more](#)

#### ■ COVID surge: fairs, festivals go virtual in Bengal

*7 days ago* - The International Kolkata Book Fair, the biggest draw in Kolkata, has been postponed by a month due to a surge in COVID-19 cases and will start from February 28. The Kolkata Steel Literary Meet ... [more](#)

#### ■ Indian Statistical Institute, Kolkata

The campus of the Indian Statistical Institute is located in a sprawling 30-acre estate on the Barrackpore Trunk Road (B.T. Road) in the Baranagore suburb of Greater Kolkata. [more](#)

#### ■ Temecula Mansion Offers 10 Acres, Private Golf Course, For \$5M

*Yesterday* - Your private retreat is waiting in the heart of Temecula's Wine Country, sits on 10+ acres of gated usable land with orchard, pool & more. [more](#)

#### ■ Registration of homes in Kolkata up 64% in 2021; down 10% in Dec: Knight Frank

*17 days ago* - The 2% stamp duty rebate has resuscitated Kolkata's residential real estate sector in the second half of the year as the city battled COVID-19 induced economic uncertainties, the consultant said. [more](#)

#### ■ Charleston investment firm buys 3 commercial properties in Goose Creek for \$3.9M

*Yesterday* - A Charleston real estate investment company has expanded its footprint in the area with the purchase of three commercial properties in Goose Creek. Goose Creek Retail LLC, an affiliate of Woodlock ... [more](#)

#### ■ Orchard Brokerage

*Aug 22, 2020* - Orchard Brokerage, is a Texas real estate firm, located at 1400 Lavaca St. 7th Floor, Austin, TX 78701. Orchard Brokerage provides a wide-range of real estate services. Consumers continue to find ... [more](#)

#### ■ Just Listed: Port Orchard Estate

*23 days ago* - Privacy abounds in this custom estate overlooking Puget Sound! Enjoy 3,628 sqft of luxurious living space on 9.79 acres of lush grounds, just five minutes from ... [more](#)

#### ■ Masterplan revealed for major Bloor Homes' new Faringdon housing estate, primary school and orchard

*Sep 3, 2020* - A MASTERPLAN for a new housing estate in Faringdon reveals how it will accommodate 425 homes alongside a primary school and a 'community forest'. Bloor

## Expert Reviews on Master Orchard Estate

Explore

[Projects in Kolkata](#)

[Brokers in Kolkata](#)

More Information

Report a problem with this listing

Is any information on this page outdated or incorrect?

[Report it!](#)

**Disclaimer:** All information is provided by advertisers, including builders/agents/owners, or collected from publicly available sources and may not be verified under RERA. Any information provided on this website, including facts and figures, should be verified independently, including via the relevant RERA website, before entering into any transaction. PropertyWala.com is only an advertising platform to help connect buyers and sellers and is not a party to any transaction, nor shall be responsible or liable to resolve any disputes between them.

[Home](#) » [Kolkata Real Estate](#) » [Projects in Kolkata](#) » [Master Orchard Estate - Madhyam Gram, Kolkata](#)