

Raksha Retreat - Bhimtal, Nainital



Mini Township for Defence Personnels

Raksha Retreat is located on Bhimtal - Saattal Road overlooking the picturesque lush green Bhimtal Valley and the emerald lake with an island.

- Project ID : J290299011
- Properties: Independent Houses
- Location: Raksha Retreat, Satt-Tall Road, Bhimtal, Nainital (Uttarakhand)
- Completion Date: Mar, 2012
- Status: Started

Description

Shikhar Group is a blue chip company that is built on extraordinary service and deep integrity, and doing a roaring trade in real estate business. Hauling the trust unto the last, our motto is to alchemize the functional design, architectural marvel & tactical site into an attractive, nature-loving place at a price you love. Since the beginning to the closing stages, we proffer a comprehensive, no-excuses approach that builds sheer trust and delivers supreme results with tandem of times. We feel blessed watching our local economy growing with the nature and we enjoy inspiring new residents and new investment into the unique townships, luxurious hotels and lavish resorts, beautiful villas, grand commercial and residential complexes. It is our mission to provide an extraordinary experience by exceeding expectations of our customers with the superior services we render.

Raksha Retreat is located on Bhimtal - Saattal Road overlooking the picturesque lush green Bhimtal Valley and the emerald lake with an island. The very existence of Raksha Retreat is inspired by the raw and ravishing natural beauty of every nook and corner of the region. All landscaped surroundings at Raksha Retreat are thoughtfully planned and aesthetically nurtured with a unique garden of medicinal and aromatic himalayan herbs in the center. Also, the logging area is designed amidst oak trees, noted for its invigorating and rejuvenating effect on human body.

Location:

*Bhimtal-Saattal Road, Nainital

Total No. of Flats:

*120 Villas

Price Range:

*Rs. 31.05 Lac to Rs. 37.16 Lac

Location Advantage:

Distance Chart:

*Delhi - 290 Km, Nainital - 14 Km, Bhimtal - 5 Km, Saattal - 4 Km

Nearest Railway Station:

*Kathgodam - 35 Km

Nearest Airport:

*Pant Nagar - 65 Km

Altitude:

*5500 Ft. - 6600 Ft. Height from the Sea Level

Amenities & Specifications:

- * 100% Power Back-Up
- * Maintenance Staff
- * Security
- * Intercom
- * Health Facilities
- * Recreation Facilities
- * Maintenance Staff
- * Garden
- * Play Area.

Features

Luxury Features

- Power Back-up ■ RO System ■ Water Softner

Lot Features

- Private Garden

Exterior Features

- Reserved Parking ■ Visitor Parking

Maintenance

- Maintenance Staff ■ Water Supply / Storage

Security Features

- Security Guards ■ Electronic Security
- Intercom Facility ■ Fire Alarm

Interior Features

- Woodwork ■ Modular Kitchen
- Feng Shui / Vaastu Compliant

Recreation

- Swimming Pool ■ Park

Land Features

- Feng Shui / Vaastu Compliant

- Rain Water Harvesting ■ Waste Disposal

- Adjacent to Main Road ■ Water Connection
- Electric Connection ■ Close to Hospital
- Close to School ■ Close to Shopping Center/Mall

Other features

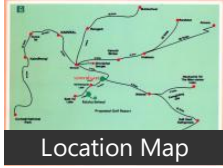
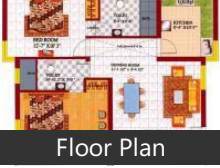
- Security / Fire Alarm ■ Private Garden / Terrace
- Security Personnel ■ Water Storage
- Rental Income: Rs. 10000
- Society Name: Raksha Retreat
- Transaction: New Property ■ Possession: Immediate
- Ownership: Freehold

Gallery

Pictures



Floor Plans



Location

Landmarks

Markets & Shopping Malls

Sher E Punjab The Mall (<12km), Classic The Mall (<12km), Shopping Complex (<20km)

Transportation

Arun Singh Airports Authority Of Ind... Bus Stand (<10km), Kathgodam Railway Station (<13km), Haldwani Railway Station (<21km)

Banks & ATMs

Pnb Branch + Atm (<21km), State Bank Of India And Atm (<21km.. State Bank Of India (<1km), Almora Co-Ep Bank (<2km), Rose BankOn The Lake (<6km)

Hotels & Guest Houses

Krishna Hotel Nanital (<1km), Lalit Guest House (<16km), Viridi Guest House (<18km)

Restaurants & Clubs

Vicky Vatika Restaurant (<2km), Mountain Club (<3km)

Parks

Black Stone Park Pandey Gaon (Yuvr...

Movie Halls

Vishal Cinema (<15km), Cinema Hall (<16km), Capitol Cinema (<17km), Cyber Den Nainital Ashok Cinema Bu.. Sargam Cinema (<22km)

Hospitals & Clinics

Shikhar Homeopathic Clinic (<21km), Hmt Townships Hospital And Nurser..

Schools & Colleges

Mount Alvern School (<1km), Devi Mandir (<2km), Sos Village And Hermann Gmeiner S...
Apna School ---Hgs (<2km), Primary School Bilaspur Bhimtal (<3k.. L.P.Inter College Bhimtal (<1km)

Offices

Genrator Room And Bsr Office (<3km Old Jalagams Office Located By Vino...

* All distances are approximate

Properties

Type	Area	Possession	Price *
2 Bedroom Independent House	1200 SqFeet	-	₹ 28 lakhs

* Data has been collected from publicly available sources and may not be up to date.

Raksha Retreat News

Expert Reviews on Raksha Retreat

Explore

[Projects in Nainital](#)

[Brokers in Nainital](#)

More Information

Report a problem with this listing

Is any information on this page outdated or incorrect?

[Report it!](#)

Disclaimer: All information is provided by builders, advertisers, or collected from publicly available sources and may not be verified as per RERA guidelines. Any information provided on this website, including facts and figures, should be verified independently before entering into any transaction. PropertyWala.com is only an advertising platform to help connect buyers and sellers and is not a party to any transaction, nor shall be responsible or liable to resolve any disputes between them.

[PropertyWala.com](#) » [Nainital Real Estate](#) » [Projects in Nainital](#) » [Raksha Retreat - Bhimtal, Nainital](#)