

Warehouse / Godown for rent in E M Bypass Extension, Kolkata

1.2 lakh



★ Featured

Warehouse/ Godown Rent In Nazirabad Near Ruby Em Bypass


Nazirabad Main Road, E M Bypass Extension, Kolkata - 7...

- Area: 4200 SqFeet ▾
- Bathrooms: Two
- Facing: East
- Furnished: Unfurnished
- Lease Period: 36 Months
- Monthly Rent: 120,000
- Rate: 29 per SqFeet **+20%**
- Age Of Construction: Under Construction
- Available: Immediate/Ready to move

Advertiser Details

Houseaa Reality
Bhairab Sanyal
Sales Director

R B Connector, Kolkata
mob: 8282862636
tel: 8276022888
mail: houseaa1@gmail.com
www.propertywala.com



Scan QR code to get the contact info on your mobile
[View all properties by Houseaa Reality](#)

Description

Warehouse/Godown rent in Nazirabad near location ruby Em bypass commercial property water and 4 fase electricity parking 20 feet high 2 gate

Please mention that you saw this ad on PropertyWala.com when you contact.

Features

Lot

- Corner Location

Maintenance

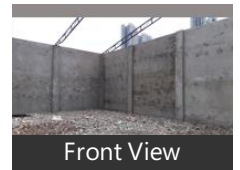
- Boring / Tube-well
- Waste Disposal

Exterior

- Visitor Parking

Location

Pictures



* Location may be approximate

Landmarks

Hospitals & Clinics

Ruby General Hospital (<2km), Ruby General Hospital-ER (<2km), Sankara Netralaya (<3km), Genesis Hospital (<1km), Medica Super Speciality Hospital (<3... Desun Hospital & Cardiac Centre (<2... Fortis Hospitals (<2km), Medica Super Speciality Hospital-ER ... Peerless Hospital & BK Roy Research... Apollo Hospital (<10km), Columbia Asia Hospitals (<10km), Peerless Hospital (<5km), Fortis Hospitals-Out Gate (<3km), Rabindranath Tagore International In...

Shopping Centre

Acropolis (<3km), South City Mall (<7km), Metro Cash and Carry (<3km), Quest Mall (<8km), Lake Mall (<9km), The Gariahat Mall (<6km), Mani Square (<11km), City Centre Mall (<12km)

Business & Services

Gateway (<2km), Akash Tower (<2km), Golden Park (<11km), Kasba Industrial Estate-II (<1km), Technopolis (<12km), Bangladesh High Commision (<9km), Bikash Bhawan (<13km)

Recreation

Science City (<6km), Iccr Kolkata (<11km), RDB Cinemas-Salt Lake (<10km), Salt Lake Stadium (<9km), Maddox Square (<9km), Victoria Memorial Hall (<12km), Carnival Cinemas (<10km), Najrul Manch (<7km), Navina Cinema (<9km), Jotindra Nath Uddyan (<5km), Eden Gardens (<13km), Aquatica-Main Gate (<11km)

Hotel

The Pride Hotel-New Town (<13km), Senses Hotel (<11km), Capital Guest House (<12km), Kenilworth Hotel Kolkata (<11km), Hyatt Regency Kolkata (<10km), Hotel Hindustan International (<10km), Hotel Rockstar (<9km), Hotel Panasia International (<9km), The Corporate (<11km),

more

Locality Reviews

E M Bypass Extension, Kolkata

Hiland Park is a very reputed society in kolkata . Centrally located with all facilities including the pool , gym etc

Pros:

- *centrally located*

Cons:

- *for a rich crowd*

Posted: Jun 12, 2017 by Michelle Dunne

E M Bypass Extension, Kolkata is rated 5 out of 10 based on 1 user reviews.

Disclaimer: The reviews are opinions of PropertyWala.com members, and not of PropertyWala.com.

Explore

[Similar Properties](#)

[Properties in E M Bypass Extension, Kolkata](#)

[Projects in Kolkata](#)

[Brokers in Kolkata](#)

More Information

Report a problem with this listing

Is this property no longer available or has incorrect information?

[Report it!](#)

Disclaimer: All information is provided by advertisers and should be verified independently before entering into any transaction. You may visit the relevant RERA website of your state to verify the details of this property. PropertyWala.com is only an advertising platform to help connect buyers and sellers and is not a party to any transactions, nor shall be responsible or liable to resolve any disputes between them.