

2 Bedroom Apartment / Flat for rent in Behala, Kolkata

11,000



Priyadarshini Apartment

E-7-99/A/ New Biren Roy Road, Muchpada Priyadarshini...

- Area: 989 SqFeet ▾
- Bathrooms: Two
- Total Floors: Five
- Furnished: Unfurnished
- Monthly Rent: 11,000
- Age Of Construction: 7 Years
- Available: Immediate/Ready to move
- Bedrooms: Two
- Floor: Third
- Facing: South East
- Lease Period: 2 Months
- Rate: 11 per SqFeet ^{-5%}

Description

2 BHK, Unfurnished, 989 sqft Residential Apartment for Rent. Stoppage - Muchipada /"more" Shopping Complex/ Domino's Pizza / New Poulami Sweets. The flat is located in 3 rd floor against G+4. 3 sides (South, East & West) of my flat are open, Airy, Spacious, Well-Lit including one Balcony. 2 Toilets are equipped with Western Commodes, Health Shower, Head Shower, Hand Shower & Cabinet with Mirror. LED Lights, Tube Lights, Ceiling Fans, AC Power points are available in both Bedrooms. Hot & Cold water points for Washing machine.

Please mention that you saw this ad on PropertyWala.com when you call.

Location

* Location may be approximate

Landmarks

Nearby Localities

[Sarsuna](#), [Joth Shibrampur](#), [Behala \(South East\)](#)

* All distances are approximate

Locality Reviews

Behala, Kolkata

Behala in South Kolkata is now most important part of Kolkata which is connected with Garia Dumdum Metro (Operational) Joka BBD Bag Metro (under Construction)

Pros:

- Schools , Colleges are available
- Hospitals are available
- Entertainment Services Centres are available

Posted: Mar 7, 2020 by Tapesh Mukherjee

Behala is an Uptown city now.Different communications available here. Nice beautiful Flats or Rooms for rent are available around Behala area only.

Pros:

- Good Locality

Posted: Nov 27, 2019 by P Mukherjee

Well developed area. Good connectivity with upcoming metro station. Good locality with all food provisions are available here.

Pros:

- Well developed area
- Good connectivity

Advertiser Details

Debashis Dutta
Non IT Engineer

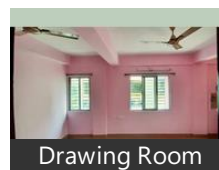
Damanjodi, Koraput
mob: 9204863649
tel: 9827422951
mail:

www.propertywala.com/U257453115

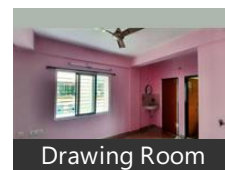


Scan QR code to get the contact info on your mobile

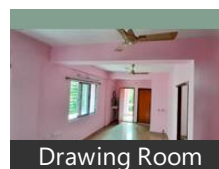
Pictures



Drawing Room



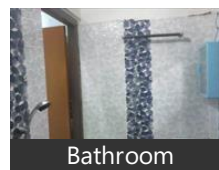
Drawing Room



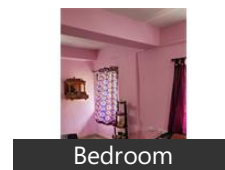
Drawing Room



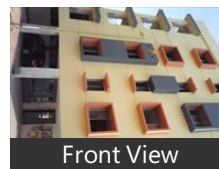
Kitchen



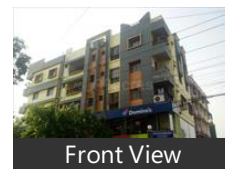
Bathroom



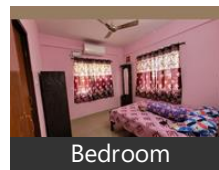
Bedroom



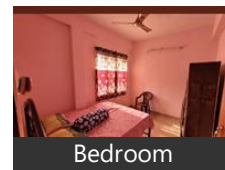
Front View



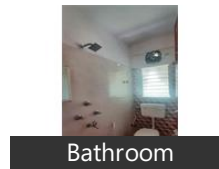
Front View



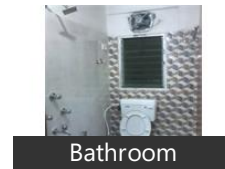
Bedroom



Bedroom



Bathroom



Bathroom



Main Entrance

- *Posh locality*

Posted: Apr 30, 2019 by Debashis Dutta

Behala is a very popular spot in Kolkata with upcoming metro. It has all facility like bank school hospital market etc

Pros:

- *It has upcoming metro*

Cons:

- *It is over crowded*

Posted: Jan 4, 2019 by Kaushik Roy

Behala is a developing centre with connectivity by public transport all around the city. Every amenities are available . with Metyro connectivity in very near future , the cost of property will rise rapidly.

Pros:

- *Investment & business wise it is fast developing.*

Cons:

- *Area is densely populated.*

Posted: Dec 6, 2018 by S. Chakraborty

Behala is a good location for residential as well as investment, the area is upcoming development location in south Kolkata. Upcoming two metro station construction is going on with full speed. Many reputed builders are here with huge land.

Pros:

- *Good locality*
- *Best investment option*

Cons:

- *Roads are narrow*

Posted: Aug 1, 2015 by [Monotosh Sarkar \(Vridhhi Landmart\)](#)

High techno metro city of Kolkata. Lucarative place for standred lifestyle. Very good atmosphere.

Pros:

- *Standard lifestyle*
- *Well Connected with City*
- *Availability of everything on door step*

Cons:

- *Traffic jam*

Posted: Sep 4, 2014 by [Mr. Kumar \(Bhowmik Realtors\)](#)

Behala is an ancient place, habitation was there since British entered India. Now it is developing at much faster place, with monorail and connection with the centre of kolkata. Though it has not lost its green. Its a peaceful, safe place for families.

Pros:

- *Availability of good shopping centers, stores, cinema halls, schools*

Posted: Mar 7, 2014 by Mriganka Das

Very peaceful area and well connected to other places of the city. No pollution, no traffic jam and three sides open flats. Upcoming metro is within 5 minutes walking distance from the flat.

Pros:

- *Upcoming location, continuously growing*
- *Well connected to other places of the city*

Posted: Oct 27, 2013 by Jayanta Das

Behala is a very peaceful locality with excellent connectivity and proximity to market place. With metro rail coming up, the entire locality will undergo a drastic change as people from all over Kolkata are now wanting to move to Behala, as it is affordable even today and the prices the lowest in this locality.

Pros:

- *Connectivity*
- *Upcoming Metro*
- *Peaceful locality*
- *Affordable location*

Cons:

- *Traffic jam*
- *Pollution*

Posted: Jul 10, 2013 by Surya Sapui

Behala, Kolkata is rated 8 out of 10 based on 10 user reviews.

Disclaimer: The reviews are opinions of PropertyWala.com members, and not of PropertyWala.com.

Explore

- [Similar Properties](#)
- [Properties in Behala, Kolkata](#)
- [Projects in Kolkata](#)
- [Brokers in Kolkata](#)

More Information

Report a problem with this listing

Is this property no longer available or has incorrect information?

[Report it!](#)

Disclaimer: All information is provided by advertisers and should be verified independently before entering into any transaction. You may visit the relevant RERA website of your state to verify the details of this property. PropertyWala.com is only an advertising platform to help connect buyers and sellers and is not a party to any transactions, nor shall be responsible or liable to resolve any disputes between them.