

Office Space for rent in Baner, Pune

70,001-1 lac



Ready To Move Office Space In Baner

Baner, Baner, Pune - 411045 (Maharashtra)

- Area: 1200 SqFeet ▾
- Bathrooms: One
- Floor: Second
- Total Floors: Seven
- Facing: East
- Furnished: Furnished
- Lease Period: 11 Months
- Monthly Rent: 95,000
- Rate: 79 per SqFeet **+10%**
- Age Of Construction: 5 Years
- Available: Immediate/Ready to move

Advertiser Details

Which Floor
Ankit Khandelwal
Managing Director

Janjeerwala Square, Indore
mob: 9039572226
tel: +91-731-4239881
mail: ankit@which-floor.com

www.propertywala.com/which-floor



Scan QR code to get the contact info on your mobile
[View all properties by Which Floor](#)

Description

Well furnished commercial office space available for lease at prime location baner
This commercial office space is a fully furnished with 1000 – 4000 sq ft
25- 150 work station, independent office space, cabin, meeting room pantry, washroom ,security with networking, 100% power backup, water supply ,car and bike parking, lift , maintenance staff etc.
The space can be used for various businesses, bpo, it company, call center, advisory, insurance etc.

Please mention that you saw this ad on PropertyWala.com when you call.

Features

General

- Power Back-up
- Centrally Air Conditioned
- Room AC
- Lifts
- High Speed Internet
- Wi-Fi

Recreation

- Swimming Pool
- Park

Security

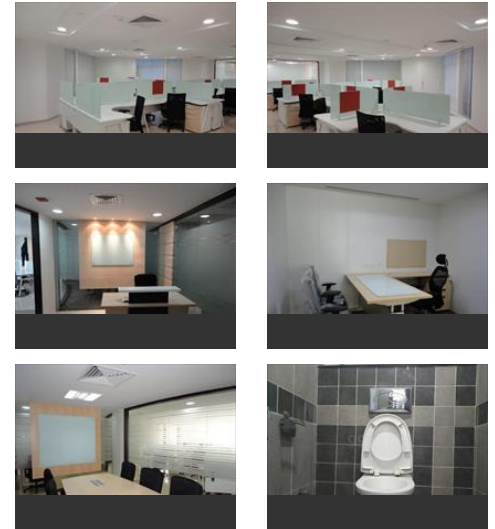
- Security Guards
- Electronic Security

Other features

- Immediate posession
- 1 to 5 years old
- Society: Quick service

Location

Pictures



* Location may be approximate

Landmarks

Transportation

Tech Mahindra Helipad (<14km), Arki Helipad (<3km), Regional Centre For Military Air Wort..
Police Heliport (<7km), Oxford Golf Course Helipad Pune (<8.. Symbiosis Helipad (<8km), Kalsit Enterprises (<9km), Mangala (<14km), N D A Gliderdrome (<14km)

Offices

Pmc Road Maintenance (<11km), Chandrasen Hall (<6km), Director Of Audit Ordanance Factorie..
Saraswati Sabhagruha (<9km), Shiv Sai Satsang Hall (<9km), B T Adwani Hall (<10km),
Kshatriya Komarpant Samaj Hall (<10.. S M Joshi Hospital (<10km), Isha Foundation - Inner engineering ...
Veer Netaji Gruh Racna Sansta Karyal... Jt Asst Dir Sr Intelligence (<11km), Dhanwantari Hall (<12km),
Prabhu Ramchandra Karyalay (<12km. Manisha Bhoir Recreation Centre (<12.. Pardeshi Town (<12km),
Jijamata Community Hall (<13km), B.T. Advani Dharmashala (<10km)

Banks & ATMs

Bank of India ATM (<9km), IDBI Bank (<11km), IDBI Bank ATM (<8km), IDBI Bank ATM (<13km),
HDFC Bank ATM (<11km), IDBI Bank ATM (<6km), Citi Bank ATM (<4km), ICICI BANK ATM (<7km),
Kotak Mahindra Bank ATM (<6km), State Bank ATM (<6km), State Bank ATM (<7km),
State Bank of India ATM (<9km), State Bank of India ATM (<8km), State Bank Of India ATM (<7km),
ICICI BANK ATM (<6km), H D F C Bank Atm (<6km), Ratnakar Bank (<6km), State Bank of India ATM (<3km),
Axis Bank ATM (<1km)

Restaurants & Clubs

Monginis Cake Shop (<9km), New Poona Bakery (<4km), Baker, New Poona Bakery (<1km), Asian Bakery (<6km),
Bailey, Copper Chocs Aundh (<4km), Monginis Cake Shop (<8km), New Poona Bakery (<6km),
MONGINIS Cake Shop Pune (<5km), Corner Bakery (<9km), Spicer Colleeq Bakery and Confectio... [more...](#)

Locality Reviews

Baner, Pune

Baner is mostly a residential and commercial hub of Pune and large portions are occupied by various IT companies. Baner is Pune's most sought after IT Hub which is also Pune's premium locale surrounded by the best of hospitals, schools, residential complexes, malls and hotels. It has easy connectivity to Mumbai Bangalore highway, Hinjewadi IT Park and other part of the city.

Pros:

- *state-of-the-art infrastructure*

Cons:

- *Traffic in peek hours*

Posted: Jan 30, 2017 by [Supervision Estate \(Sv Real Estate\)](#)

Baner is the fastest developing area with all infrastructure, concrete roads, shops, Malls, school, IT parks, Hotels and recreational club, Hospitals and upcoming multiplex gives this area the first preference of the people looking property in good elite location after Aundh which provide good connectivity with city as well as to the Mumbai-Bangalore highway, Hinjewadi IT hub etc. Rate appreciation is very high in Baner because of fast development.

Pros:

- *Best connectivity with city and Highway*
- *Great appreciation of the property*

Cons:

- *Ground water shortage in Summer*

Posted: Jun 14, 2016 by [Prafulh Meshram \(Opulentt Homess\)](#)

Baner is a noiseless place. Good ventilation and neighbors are helpful. All the places like High School, Hospital, ATM and shops as well as petrol pump are at walk able distance.

Pros:

- *Good Connectivity*

Posted: Feb 1, 2016 by Sharad Kate

Baner is a safe and secure place for all the residents. A very good opportunity for investment also.

Pros:

- *Good Location*
- *All amenities nearby*

Posted: Nov 5, 2015 by [Yogesh Shinde \(Unique Developers\)](#)

Baner is locality near to Bombay - Bangalore Expressway which gives very good investment place to investors from Mumbai. Proximity to Hinjewadi IT Hub makes the place more important and good investment proposal.

Pros:

- *Good investment*
- *Good returns*
- *Good rent available*

Posted: Oct 24, 2015 by Pravin Bhangale

Baner is the fastest growing suburb of Pune, and which has become envy of traditional posh localities like Koregaon Park and Prabhat Road areas. Most of it is populated by the IT Crowd as it is nearest to the well known IT destination of Hinjewadi, which has the biggest head of all "Big Three". Very good infrastructure with malls, schools, and hospitals within a radius of 3 km. Very close to the bypass going to Mumbai and can belt along it.

Pros:

- *Well developed area*

Posted: Aug 27, 2015 by Maj Sathe

Baner - is called to be the next KP / Kalyani Nagar of Pune which has all infrastructure ready. Concrete roads, shopping malls, reputed schools, colleges, food joints. Recently opened KFC, Puma Showroom adds to its charm. Cummings India office gives one more star to Baner's glory. Newly planned Multiplex and Mall will make it more preferred location of IT, Banking sector.

Pros:

- *Close proximity to Hinjewadi*
- *Close proximity to University, Kothrud*
- *Easy access to daily needs and modern lifestyle*

Posted: Aug 10, 2014 by [Sachin Wani \(Wani Properties\)](#)

Baner is an upcoming development with all modern amenities around the area. Closer to Pune and easy access to highway for Mumbai.

Pros:

- *Upcoming cream area*
- *Connectivity*
- *Modern*

Posted: Jun 12, 2013 by Hrishu Bagade

Explore

[Similar Properties](#)

[Properties in Baner, Pune](#)

[Projects in Pune](#)

[Brokers in Pune](#)

More Information

Report a problem with this listing

Is this property no longer available or has incorrect information?

[Report it!](#)

to help connect buyers and sellers and is not a party to any transactions, nor shall be responsible or liable to resolve any disputes between them.