

DLF Cybercity - Patia, Bhubaneswar



finesse and has an attractive frontage

Dlf Cybercity is a commercial developments which offers shops and office spaces in different sizes equipped with all the amenities.

- Project ID: J557311899
- Builder: DLF Limited
- Location: DLF Cybercity, Patia, Bhubaneswar - 751024 (Odisha)
- Completion Date: Apr, 2020
- Status: Started

Description

DLF Cybercity is one of the commercial developments The project offers shops and office spaces the site is well connected by different modes of transportation and is in close proximity of various civic utilities. Some of the key systems and value-adds include 100% power backup, central air conditioning, 24 hour CCTV security system, and excellent accessibility. DLF Cybercity provides the best 'walk to work' environment. DLF Cybercity will redefine the entire experience of a business district with brand new offices and facilities for retail and accommodation.

Amenities :

- Lift(s)
- 24/7 Water Supply
- 24/7 Power Backup
- Fire Fighting Systems
- InterCom
- Car Parking
- Gymnasium
- Sewage Treatment Plant
- ATM
- Cafeteria
- Food Court
- Restaurant
- CCTV Camera Security
- Medical Centre
- Property Staff
- Vastu Compliant
- Video Door Security

DLF started with the creation of 22 urban colonies in Delhi. In 1985, the company expanded into the then-unknown region of Gurugram, creating exceptional living and working spaces for the new Indian global professionals. Today, DLF is the largest publicly listed real estate company in India, with residential, commercial, and retail properties in 15 states and 24 cities. Our diverse verticals reflect our dedication to developing ecosystems for India's changing needs. But our foundation has always been our employees, our customers, our stakeholders, and our shareholders.

Features

Security Features

- Security Guards ■ Electronic Security
- Intercom Facility ■ Fire Alarm

Lot

- Basement

Maintenance

- Maintenance Staff ■ Water Supply / Storage
- Rain Water Harvesting ■ Waste Disposal
- RO System ■ Water Softner

Lot Features

- Balcony ■ Corner Location ■ Park Facing

Exterior Features

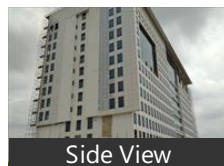
- Reserved Parking ■ Visitor Parking
- Independent Garage

General

- Power Back-up ■ Centrally Air Conditioned
- Room AC ■ Lifts ■ High Speed Internet ■ Wi-Fi

Gallery

Pictures





Side View



Side View



Elevation

Floor Plans



Master Plan



Location Map



Floor Plan

Location

Landmarks

Hospitals & Clinics

Kims Hospital (<1km), Mahesh Medical Store (<3km), Kalinga Hospital (<6km), Sum Hospital-ER (<12km), Kims Hospital-ER (<1km), Maternity Care Hospital (<10km), Kar Clinic & Hospital (<12km), Kar Clinic & Hospital-ER (<12km), Sai Bone and Joint Clinic (<6km), Hi-Tech Hospital (<12km), J. K Diagnostic (<8km), Sanjivani Ayurvedic Clinic (<9km), Gastro & Kidney Care Hospital-ER (<... Gastro & Kidney Care Hospital (<10k... Patanjali Chikistchalaya (<10km)

Hotel

The Crown (<9km), VITS Bhubaneswar Hotel (<13km), Empires Hotel Bhubaneswar (<11km), Stone Palace-Patia (<0.5km), Hotel Hindusthan International (<13... Mayfair Lagoon (<8km), Sandy, Hotel Sidharth (<9km), The Presidency (<10km), Bhubaneswar Hotel (<13km), Suryansh Hotel and Resort (<6km), Swosti Grand (<13km), Hotel Chancellor (<13km), Pal Heights (<8km), Hotel Kharvel-Bhubneswar (<14km), Hotel Lavender (<9km)

Public Transport

Patia Railway Station (<5km), Bhubaneswar Railway Station (<14km), Baramunda Bus Station (<12km), New Bus Stand Orrtc Bus Station (<1... Mancheswar Railway Station (<7km), City Bus Station (<14km)

Restaurant & Shops

Big Bazaar (<3km), Little Berry (<1km), vodafone Store (<2km), Reliance Fresh (<9km), Hunter, Nigam Info Solution (<4km), The Cake Shop (<10km), Bake Shop (<6km), Rock on Pub (<7km), Reliance Footprint (<8km), Samsung Mobile (<9km), Happy Care Services-SONY (<9km), The Dream Merchant-vodafone Min... Vishal Mega Mart (<9km), Skipper Furnisings (<10km), Burma Sports (<10km), Prem Computers (<10km), Kalamandir Royale (<11km)

Recreation

Nandankanan Zoological Park (<8km), Inox-Bhawani Mall (<11km), Prachi Enclave Park (<4km), Ekamra Vihar Park (<8km), Regional Science Centre (<9km), Sports Centre (<3km), Jayadev Batika (<14km), Mahatma Gandhi Park-Alternative G... Indira Gandhi Park (<13km), Regional Museum of Natural Science.. Regional Museum of Natural History...

Building

Regal Court (<9km), Madhuban (<2km), Ganapati Apartment (<2km), Mamata (<4km), Priyanka Residency (<4km), Swasti (<4km), Sambit Residency (<12km), Bishnu (<12km), Kaibarta Bhawan (<8km), Adhikar House (<10km), N. B. Tower (<10km), Bhawani Villa (<10km)

ATM/Bank/Exchange

Bank of Baroda-Irc (<8km), Syndicate Bank-Ceb Campus (<2km), Allahabad Bank (<2km), Indian Bank (<2km), Punjab National Bank-Chandrasekha... State Bank of India (<14km), United Bank Of India (<11km), Hdfc Bank (<9km), United Bank of India-Chandaka Indu... Axis Bank (<10km), bank of india (<10km)

Shopping Centre

Pantaloons (<10km), Forum Mart (<12km), BMC Bhawani Mall (<11km)

Landmark/Attraction

Iskcon (<9km)

Going Out

New Marrion Hotel (<12km)

Museum

Museum of Tribal Arts & Artefacts (<..

* All distances are approximate

Properties

DLF Cybercity News

Expert Reviews on DLF Cybercity

Explore

[Projects in Bhubaneswar](#)

[Brokers in Bhubaneswar](#)

More Information

Report a problem with this listing

Is any information on this page outdated or incorrect?

[Report it!](#)

Disclaimer: All information is provided by advertisers, including builders/agents/owners, or collected from publicly available sources and may not be verified under RERA. Any information provided on this website, including facts and figures, should be verified independently, including via the relevant RERA website, before entering into any transaction. PropertyWala.com is only an advertising platform to help connect buyers and sellers and is not a party to any transaction, nor shall be responsible or liable to resolve any disputes between them.

[PropertyWala.com](#) » [Bhubaneswar Real Estate](#) » [Projects in Bhubaneswar](#) » [DLF Cybercity - Patia, Bhubaneswar](#)