

## Majestique Marbella - Kharadi, Pune



### Spacious Apartments with Luxury Features

Majestique Marbella is presented by Majestique Landmarks at Kharadi, Pune offers residential project that hosts 2 & 3 BHK apartment with good features

- Project ID: J289650111
- Builder: Majestique Landmarks
- Location: Majestique Marbella, Kharadi, Pune - 411014 (Maharashtra)
- Completion Date: Dec, 2025
- Status: Started

### Description

**Majestique Marbella** by Majestique Landmarks located at Kharadi Pune shining suburb and home to it's finest lifestyle project. The project is spread over 662 - 853 sq ft comprising of 2 and 3 bhk apartments with 140 units. The project is equipped with key amenities including gymnasium, landscape garden, jogging track etc & well connected with other parts of city and has all the basic utilities nearby.

**RERA ID :** P52100025697

### Amenities:

- Landscaped Garden
- Water Body & Fountain
- Gymnasium
- Play Area for Kids
- Gazebo
- Yoga Centre
- Multipurpose Hall
- Rooftop Infinity Swimming Pool with Kids Pool
- Indoor Games
- Jogging Track
- Jacuzzi & Steam Bath
- Mini Theatre
- Plug and Play-Functional Co-working Spaces for Society Member
- CCTV Cameras in all common areas
- Water Harvesting
- STP

**Majestique Landmarks** began its existence as a textile company. Eventually the business grew to include production facilities at Surat, Varanasi, Bengaluru and Mumbai, and 30 retail outlets – collectively measuring over 3 lakh sq. ft. – in all the major cities of Maharashtra. In 2007, the company diversified into the real estate sector, with residential projects in Pune, at Hadapsar and Market Yard. The success of the projects prompted a full scale thrust into construction through a variety of residential developments across the city, each aimed at a specific demographic.

### Features

#### Luxury Features

- Power Back-up ■ Lifts

#### Recreation

- Swimming Pool ■ Park ■ Fitness Centre / GYM
- Club / Community Center

#### Land Features

- Club / Community Center ■ Water Connection
- Electric Connection ■ Close to Hospital
- Close to School ■ Close to Shopping Center/Mall

#### Exterior Features

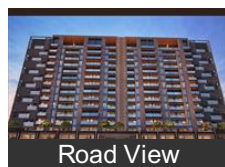
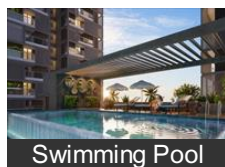
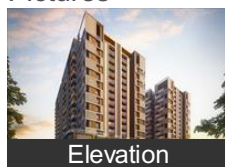
- Reserved Parking

#### Maintenance

- Rain Water Harvesting

### Gallery

#### Pictures





Main Entrance

## Floor Plans



Floor Plan A



Floor Plan B

## Location

## Landmarks

### Hotel

Hyatt Regency Pune & Residences... The Westin-Koregaon Park (<6km), Radisson Blu Hotel-Kharadi (<1km), ibis Pune Viman Nagar (<4km), Taj Blue Diamond Hotel Pune (<9k... Cocoon Hotel (<8km), St Laum Koregaon Park Pune (<9k... New Leaf Hotels (<5km), FOUR POINTS BY Sheraton-Viman... Chokhi Dhani Pune (<4km), Fairfield by Marriott-Pune Kharadi (... Hotel Maple-Nagar Road Wagholi (... Hotel Studio Estique (<10km), The Central Park Hotel (<10km), Hotel Hindustan International-Vima... Hotel Shri Panchratna (<11km), The O Hotel-Koregaon Park (<8km), Hotel le Royce-Bund Garden (<9km... Oyo 1216 Hotel New White House ... Hotel Ivy Studios (<5km), Jasminium (<4km), Hotel Parc Estique - Pune (<3km), Royal Orchid Golden Suites (<5km)

### Shopping Centre

Phoenix Market City (<3km), Inorbit Mall (<3km), Amanora Town Centre (<6km), Seasons Mall (<7km), Koregaon Park Plaza (<6km), Pune Central (<9km), SGS Mall (<11km), Magarpatta Mall (<6km), Nucleus Mall (<11km), PhoenixMarket City Mall (<4km), Fashion Street Pune Camp ■■■|...

### Business & Services

Eon It Park (<2km), Eon Kharadi Infrastructure (<2km), Zensar Technologies (<2km), Bharat Forge (<7km), Pride Icon (<3km)

### Recreation

Inox Movies (<11km), Aga Khan Palace (<6km), Bollywood Multiplex Kharadi (<3km), Decathlon Wagholi (<5km), PVR Cinemas (<6km), Osho Teerth Park (<7km), Gold Adlabs Multiplex (<6km), Osho Teerth Gardens (<8km), DECATHLON (<5km), Shaniwar Wada (<14km), Cinepolis (<6km)

### Public Transport

Pune International Gate No 3 (<6km... Hadapsar Railway Station (<5km), Pune Station (<11km), Pune Railway Station Bus Station (... Hadapsar Bus Station (<9km), Shivajinagar Station (<14km)

### Restaurant & Shops

Reliance SMART (<1km), Kayani Bakery (<11km), D Mart (<5km), High spirits (<6km), Cafe 1730 (<7km), Aqua Lounge Restaurant (<11km), Lifestyle (<11km), Ritz Hotel (<11km)

### Building

Brahma Sun City Entrance-1 (<4km), Giga Space (<3km), Geras Emerald City (<2km), Destination Center (<8km), Acolade (<2km), Brahma Sun City-A (<4km), Magarpatta City-West Gate (<8km), Sun-N-Sand Pune (<9km), Vishwajeet Residency (<1km), Forest County (<1km), Neco Gardens (<4km), Lunkad Green Land 2 (<4km), Madhuban Satin Brick (<2km), One North Tower 1-One North (<6k... Iris-Main Entrance (<8km), Kumar Picasso (<7km), Rohan Mithila (<5km), Gardeniya Phase-2 (<3km), Jasminium-2 (<8km), Disha Skyline (<4km), Kumar Primavera (<4km)

### Hospitals & Clinics

Sahyadri Speciality Hospital (<7km), Niramay Hospital (<3km), Grant Medical Foundation Ruby Ha... Inlaks & Budhrani Hospital (<9km), Jehangir Hospital (<11km), Noble Hospital & Research Centre..

Snacks/Fast food

German Bakery (<8km)

ATM/Bank/Exchange

State Bank of India-Kalyani Nagar (... HSBC Software Development India... Icici Bank-Kharadi (<2km),  
HDFC Bank-Kalyani Nagar (<5km), Bank of India-Wagholi (<8km), Citibank (<4km)

Landmark/Attraction

Mulshi Dam (<12km)

Petrol Station

Indian Oil (<8km)

\* All distances are approximate

## Properties

## Majestique Marbella News

## Expert Reviews on Majestique Marbella

Explore

[Projects in Pune](#)

[Brokers in Pune](#)

More Information

Report a problem with this listing

Is any information on this page outdated or incorrect?

[Report it!](#)

**Disclaimer:** All information is provided by advertisers, including builders/agents/owners, or collected from publicly available sources and may not be verified under RERA. Any information provided on this website, including facts and figures, should be verified independently, including via the relevant RERA website, before entering into any transaction. PropertyWala.com is only an advertising platform to help connect buyers and sellers and is not a party to any transaction, nor shall be responsible or liable to resolve any disputes between them.

[Home](#) » [Pune Real Estate](#) » [Projects in Pune](#) » [Majestique Marbella - Kharadi, Pune](#)