

Surekha The Emerald-2 - Lakshmi Sagar, Bhub...



Wonderfully crafted bearing in mind all your needs

Surekha The Emerald-2 by Surekha Builders & Developers Pvt Ltd at Laxmi Sagar in Bhubaneswar offers residential project that host 2 bhk and 3 bhk apartments in various sizes.

- Project ID: J289957011
- Builder: Surekha Builders & Developers Pvt Ltd
- Location: Surekha The Emerald-2, Lakshmi Sagar, Bhubaneswar (Odisha)
- Completion Date: Apr, 2017
- Status: Started

Description

Surekha The Emerald-2 by reputed builder Surekha Builders & Developers Pvt Ltd at the very prime location of Laxmi Sagar offers spacious 2 bhk and 3 bhk apartments in the size ranges in between 1260 to 1330 sqft. The project host amenities like lift, car parking, gym etc for the residents. The project is well connected with other parts of city and has all the basic utilities nearby.

Amenities:

- Community Hall
- Covered Car Parking
- Gym
- Indoor Games
- Landscaped Garden
- Library
- Lift
- Swimming Pool
- 24Hrs Backup Electricity
- Intercom
- Club House

Surekha Builders & Developers Private Limited approach is to providing real estate solutions stems from pure professionalism, through knowledge of market trends, technical know how, utilization of world class construction methods and equipment. Its wealth is a rich vault of experience which grows with each new project implemented.

Features

Luxury Features

- Power Back-up ■ Lifts ■ High Speed Internet

Security Features

- Security Guards ■ Electronic Security
- Intercom Facility

Lot Features

- Balcony ■ Corner Location

Exterior Features

- Reserved Parking ■ Visitor Parking

Recreation

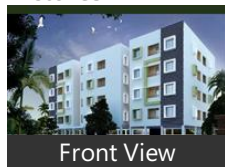
- Swimming Pool ■ Park ■ Fitness Centre / GYM
- Club / Community Center

Maintenance

- Maintenance Staff ■ Water Supply / Storage

Gallery

Pictures



Front View

Floor Plans



Master Plan



Floor Plan



Location Map

Documents



Location

Landmarks

Hotel

Vits Bhubaneswar Hotel (<3km), Empires Hotel Bhubaneswar (<1km), The Crown (<4km), Hotel Chancellor (<5km), Hotel Urmee (<2km), Bhubaneswar Hotel (<2km), Step in Hotel (<6km), Swosti Grand (<4km), Mayfair Lagoon (<4km), Hotel Sidharth (<4km), Hotel Hindustan International-Bhuba.. Venus Inn Bapuji Nagar (<6km), The Presidency (<5km), Suryansh Hotel and Resort (<5km), Hotel Pushpak (<6km), Sandy, Residency-Ashok Nagar (<5km), Pal Heights (<4km)

Recreation

Inox-Bhawani Mall (<1km), Regional Science Centre (<2km), Biju Patnaik Park (<6km), Ekamra Vihar Park (<7km), Indira Gandhi Park (<4km), State Museum (<6km), Prachi Enclave Park (<7km), Jayadev Batika (<10km), Ekamra Talkies (<2km), Regional Museum of Natural Science.. Ravi Talkies-Nageswar Tangi (<8km), Regional Museum of Natural History... Children

Public Transport

Bhubaneswar Railway Station (<4km), Biju Patnaik International Airport (BB... Baramunda Bus Station (<9km), Patia Railway Station (<8km), City Bus Station (<4km), New Bus Stand Orrtc Bus Station (<9...

Restaurant & Shops

Big Bazaar (<3km), The Cake Shop (<0.5km), Reliance Fresh (<1km), Hunter, Motoassist-Motorola (<6km), Skipper Furnisings (<1km), Micromax Check Point (<6km), Kalamandir Royale (<1km), Suraj Wines FL Off Shop (<1km), Reliance Trends (<1km), Microsoft Priority (<1km), Mehers (<3km), Fastrack (<3km), Burma Sports (<3km), Reliance Footprint (<4km), Lalchand Enterprises (<4km)

Shopping Centre

Pantaloons (<1km), Forum Mart (<3km), BMC Bhawani Mall (<1km)

Building

Regal Court (<6km), Sambit Residency (<3km), Bishnu (<6km), Jahnabi (<7km), Vastukar (<7km), Vipul Gardens (<13km), Shivani (<3km), PWD Colony (<3km), Meghdoot Bhawan (<4km)

ATM/Bank/Exchange

Bank of Baroda-Irc (<4km), State Bank of India (<5km), United Bank Of India (<5km), bank of india (<1km), HDFC Bank (<1km), Axis Bank (<2km), United Bank of India-Chandaka Indu... Axis Bank-Bhubaneswar (<3km)

Hospitals & Clinics

Maternity Care Hospital (<1km), BBSR Diagnostics Digital X-Ray (<7km Kalinga Hospital (<5km), Kar Clinic & Hospital (<3km), Kar Clinic & Hospital-ER (<3km), Capital Hospital (<6km), Hi-Tech Hospital (<4km), Patanjali Chikistchalaya (<0.5km), Amri Hospital (<12km), Mahesh Medical Store (<9km), Capital Hospital-Gate No 1 (<6km), Shree Hospital (<7km), Kims Hospital (<10km), Sai Bone and Joint Clinic (<4km)

Going Out

New Marrion Hotel (<3km)

Landmark/Attraction

Rajarani Temple (<8km), Iskcon (<5km), Sri Ram Mandir (<3km), Ananta Basudev Temple (<9km), Rameswar Temple (<9km)

* All distances are approximate

Properties

Surekha The Emerald-2 News

Expert Reviews on Surekha The Emerald-2

Explore

[Projects in Bhubaneswar](#)

[Brokers in Bhubaneswar](#)

More Information

Report a problem with this listing

Is any information on this page outdated or incorrect?

[Report it!](#)

Disclaimer: All information is provided by advertisers, including builders/agents/owners, or collected from publicly available sources and may not be verified under RERA. Any information provided on this website, including facts and figures, should be verified independently, including via the relevant RERA website, before entering into any transaction. PropertyWala.com is only an advertising platform to help connect buyers and sellers and is not a party to any transaction, nor shall be responsible or liable to resolve any disputes between them.

[Home](#) » [Bhubaneswar Real Estate](#) » [Projects in Bhubaneswar](#) » [Surekha The Emerald-2 - Lakshmi Sagar, Bhubaneswar](#)