

5 Bedroom Apartment / Flat for rent in Neeti Bagh, New Delhi

2.5 lakhs



, Neeti Bagh, New Delhi - 110049 (Delhi)

- Area: 3850 SqFeet ▾
- Bathrooms: Five
- Rate: 65 per SqFeet +5%
- Available: Immediate/Ready to move
- Bedrooms: Five
- Monthly Rent: 250,000

Description

Brand new builder floor available for rent in posh locality of niti bagh, north facing second floor with very nice and big terrace garden, newly built-Up ready to move on wide road with 100% air-Conditioned and fully d.G. Power back-Up, having 4 bedrooms with 1 study room with attached ultra modern bathrooms , separate drawing/ dining , lobby , store room, servant quarter, extra large modular kitchen , independent 2 inside drive way car parking ,italian marble flooring , building made by one of the top builder of delhi. Rich specifications, exclusive fittings and fixtures, back service lane, for more details please contact genuine clients only, preferred mncs, diplomats, high commissions or foreigners only.

For more information regarding independent bungalows, houses, builder floor apartments in other localities as given below then please contact :

When you call, please mention that you saw this ad on PropertyWala.com.

Features

Other features

- Builtup Area: 3850 Sq.Ft. ■ Freehold ownership
- North Facing ■ Balconies: More than 3
- Floor: 2nd of 3 Floors ■ 0 to 1 year old
- Additional Rooms: Pooja Room, Study Room, Servant Room
- Marble Flooring ■ Furnishing: Semifurnished
- Reserved Parking

Location

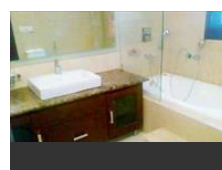
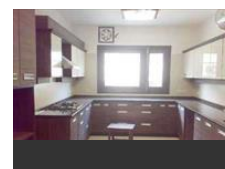
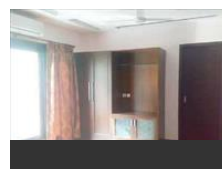
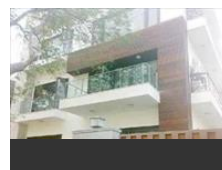
Advertiser Details



Scan QR code to get the contact info on your mobile

[View all properties by Sharma Estates](#)

Pictures



* Location may be approximate

Landmarks

Nearby Localities

[Uday Park](#), [Gautam Nagar](#), [Anand Lok](#), [Yusuf Sarai](#), [South Ext-II](#), [Gulmohar Park](#), [Andrews Ganj](#), [Asiad Village](#),
[South Ext-I](#), [Green Park](#), [Uday Park](#), [Gautam Nagar](#), [Anand Lok](#), [Yusuf Sarai](#), [South Ext-II](#), [Gulmohar Park](#),
[Asiad Village](#), [South Ext-I](#), [Green Park](#), [Siri Fort](#), [Uday Park](#), [Gautam Nagar](#), [Anand Lok](#), [Yusuf Sarai](#), [South Ext-II](#),
[Gulmohar Park](#), [Asiad Village](#), [Shahpur Jat](#), [South Ext-I](#), [Green Park](#), [Uday Park](#), [Gautam Nagar](#), [Anand Lok](#),
[Yusuf Sarai](#), [South Ext-II](#), [Gulmohar Park](#), [Asiad Village](#), [Shahpur Jat](#), [South Ext-I](#), [Green Park](#), [Uday Park](#),
Gautam Nagar, Anand Lok, Yusuf Sarai, South Ext-II, Gulmohar Park, Asiad Village, Shahpur Jat, South Ext-I,
Green Park, Uday Park, Anand Lok, Yusuf Sarai, South Ext-II, Gulmohar Park, Asiad Village, Shahpur Jat,
Sahapurjat Village, South Ext-I, Green Park, Uday Park, Gautam Nagar, Anand Lok, Yusuf Sarai, South Ext-II,
Gulmohar Park, Asiad Village, Shahpur Jat, South Ext-I, Green Park, Uday Park, Anand Lok, Yusuf Sarai,
South Ext-II, Gulmohar Park, Asiad Village, Shahpur Jat, South Ext-I, Green Park, Siri Fort, Uday Park, Anand Lok,
Yusuf Sarai, South Ext-II, Gulmohar Park, Asiad Village, Shahpur Jat, South Ext-I, Green Park, Siri Fort, Uday Park,
Anand Lok, Yusuf Sarai, South Ext-II, Gulmohar Park, Asiad Village, South Ext-I, Green Park, Siri Fort,
South Extension, Uday Park, Anand Lok, Yusuf Sarai, South Ext-II, Gulmohar Park, Asiad Village, South Ext-I,
Green Park, Siri Fort, South Extension, Uday Park, Anand Lok, Yusuf Sarai, South Ext-II, Gulmohar Park,

[Asiad Village](#), [South Ext-I](#), [Green Park](#), [Siri Fort](#), [South Extension](#), [Uday Park](#), [Anand Lok](#), [Yusuf Sarai](#), [South Ext-II](#), [Gulmohar Park](#), [Asiad Village](#), [South Ext-I](#), [Green Park](#), [Siri Fort](#), [South Extension](#), [Uday Park](#), [Anand Lok](#), [Yusuf Sarai](#), [South Ext-II](#), [Gulmohar Park](#), [Asiad Village](#), [South Ext-I](#), [Green Park](#), [Siri Fort](#), [South Extension](#), [Uday Park](#), [Anand Lok](#), [Yusuf Sarai](#), [South Ext-II](#), [Gulmohar Park](#), [Asiad Village](#), [South Ext-I](#), [Green Park](#), [Siri Fort](#), [South Extension](#), [Uday Park](#), [Gautam Nagar](#), [Anand Lok](#), [Yusuf Sarai](#), [South Ext-II](#), [Gulmohar Park](#), [Asiad Village](#), [South Ext-I](#), [Green Park](#), [Siri Fort](#), [Uday Park](#), [Gautam Nagar](#), [Anand Lok](#), [Yusuf Sarai](#), [South Ext-II](#), [Gulmohar Park](#), [Asiad Village](#), [South Ext-I](#), [Green Park](#), [Siri Fort](#)

* All distances are approximate

Explore

- [Similar Properties](#)
- [Properties in Neeti Bagh, New Delhi](#)
- [Projects in New Delhi](#)
- [Brokers in New Delhi](#)

More Information

Report a problem with this listing

Is this property no longer available or has incorrect information?
[Report it!](#)

Disclaimer: All information is provided by advertisers and should be verified independently before entering into any transaction. You may visit the relevant RERA website of your state to verify the details of this property. PropertyWala.com is only an advertising platform to help connect buyers and sellers and is not a party to any transactions, nor shall be responsible or liable to resolve any disputes between them.