

## JLPL Sky Gardens - Sector 66 A, Mohali



Offers the choice of that are meticulously designed and exclusively planned

JLPL Sky Gardens by Janta Land Promoters Ltd at the very prime location of Sector 66 A in Mohali offers residential project that host 2 bhk apartments in various sizes.

- Project ID: J919018721
- Builder: Janta Land Promoters Ltd
- Location: JLPL Sky Gardens, Sector 66 A, Mohali - 140308 (Chandigarh)
- Completion Date: Dec, 2016
- Status: Started

### Description

**JLPL Sky Gardens** by Janta Land Promoters Ltd at the very prime location of Sector 66 A in Mohali offers residential project that host spacious 2 bhk apartments in the size ranges between 1345 to 1431 sqft. The amenities at the projects are Landscaped Garden, Play Area, Club House, Maintenance Staff etc. is strategically located and provides direct connectivity to nearly all other major points in and around Mohali. It is one of the most reputable address of the city with easy access to many famed schools, shopping areas, hospitals.

#### Amenities :

- Club House
- Landscaped Garden
- Maintenance Staff
- Play Area
- Security Personnel

**JLPL, Janta Land Promoters** was founded in the year 2003. It is engaged in the development of residential and industrial projects with latest and advanced technology infrastructure at Mohali and other cities of Punjab. Since inception, it has executed a number of large-scale real estate projects across Ludhiana, Mohali, and Himachal and has emerged to be a trusted name in the real estate industry. It develops quality projects in response to the rising aspirations of buyers who want to change the way they lived earlier.

### Features

#### Luxury Features

- Power Back-up ■ Lifts ■ High Speed Internet

#### Lot Features

- Balcony ■ Park Facing

#### Exterior Features

- Reserved Parking ■ Visitor Parking

#### Maintenance

- Maintenance Staff ■ Water Supply / Storage
- Rain Water Harvesting

#### Security Features

- Security Guards ■ Intercom Facility

#### Interior Features

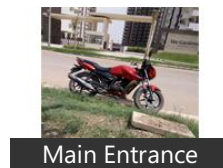
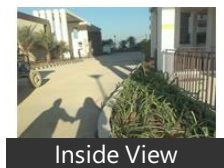
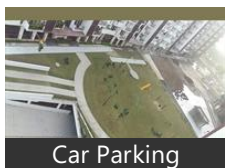
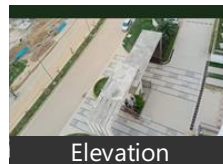
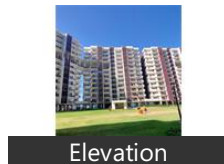
- Feng Shui / Vaastu Compliant

#### Recreation

- Park ■ Fitness Centre / GYM

### Gallery

#### Pictures



### Location

## Landmarks

### Recreation

Park-Sec 82 (<2km), Silvi Park-Phase 10 Mohali (<4km), Children Park-Sector 68 (<5km), Tagore Theatre (<13km), Park-Sector 67 (<4km), City Park (<5km), Park-Ind Area Phase 8 (<9km), Park-Sector 46a (<7km), Archies Gallery (<7km), Bassi Theatre (<10km), Japanese Garden Chandigarh (<8km), Park No 35-Sector 33 D (<9km), Commando Complex (<4km), Thunder Zone Amusement Park (<4k.. PVR Cinema (<10km)

### Hotel

The Altius (<9km), Homotel Chandigarh (<11km), Hotel Sky (<9km), Park Plaza Zirakpur (<11km), Hotel Lemon Tree Chandigarh (<11k... The Majestic (<5km), JW Marriott Hotel Chandigarh (<11k... Hotel Shivalikview (<13km), Hotel KLG International (<9km), The Piccadily (<12km), Hotel Sapphire (<10km), Hotel Diamond Plaza (<11km), Sarao Hotel Phase-10, AKM Resorts (<9km), Hotel Aroma (<12km), Hotel Blue Diamond-Phase 9 Mohali... Hotel Supremo-Sector 45a (<8km), Hotel President (<13km), Hotel City Heart Premium (<13km), JW Marriott-Sec 35b (<11km), Hotel Landmark-Sec 22c (<11km), Hotel Dream-Patiala Road Zirakpur (... Hotel KLG Starlite (<9km), Hotel The Pearl (<9km), ginger-Chandigarh (<10km), Hotel Park Grand (<9km), Ramada Plaza Chandigarh (<9km), Hotel the Zodiac (<10km), Hotel Chandigarh Beckons (<10km), Orbit Hotel (<10km), Maya Hotel (<11km), The FIRST HOTEL (<9km), Hotel Western Court (<9km), Raj Shree Hotel-Indl Area PH 1 (<9km.

### Other features

Mohali (<4km)

### Building

Star Enclave (<4km), Jal Vayu Vihar Society (<4km), Prabh Premium Apartments (<8km), Kendriya Vihar (<5km), Tdi City (<10km)

### Public Transport

Sas Nagar Mohali Railway Station (<1.. Isbt-Sector 43 Bus Station (<9km), Chandigarh International Airport (IXC. Inter State Bus Terminal (ISBT) - 17 (<. Railway Station (<12km), Antarraji Bus Station-Mohali (<6km), Zirakpur Bus Station (<10km), Sector 43 Local Bus Station (<9km)

### ATM/Bank/Exchange

Axis Bank-Phase 7 Mohali (<7km), Bank of India (<11km), Canara Bank (<13km), Punjab National Bank (<8km), HDFC BANK (<3km), Indusind Bank (<9km), State Bank of India-Sector 26 Grain M..

### Business & Services

P. S. Industries (<2km), Himachal Bhawan Chandigarh (<13k.. Swaraj Engines (<2km), Philips India (<2km), Mahindra Swaraj Division-Mahindra-... Portex Technologies (<12km)

### Restaurant & Shops

Planer Ayurveda (<2km), Zodiac (<13km), Hotel Parkview (<14km), Kalyan Jewellers (<10km), vodafone Store (<8km), Reliance Mobile Store (<10km), Service Centre-HP (<10km)

### Hospitals & Clinics

Fortis Hospital-ER (<6km), Chaitanya Hospital (<8km), Siddharth Diagnostic Centre (<7km), Eye Hospital (<10km), Max Super Speciality Hospital (<13km.

### Shopping Centre

Krishna Market (<11km), Market-Sector 17d (<14km), Elante Mall Chandigarh (<11km), Shopping Centre-Sector 46c (<7km), Elante Mall-Gate No1 (<10km), Rama Stores (<12km), Sector-22 Market (<12km), Piccadily Square (<11km), Phase 3a Mohali Market (<10km), Sabji Mandi (<13km)

### Museum

Chhatbir Zoo (<11km)

### Petrol Station

Indian Oil (<3km)

\* All distances are approximate

## Properties

## JLPL Sky Gardens News

## Expert Reviews on JLPL Sky Gardens

Explore

[Projects in Mohali](#)

[Brokers in Mohali](#)

More Information

Report a problem with this listing

Is any information on this page outdated or incorrect?

[Report it!](#)

**Disclaimer:** All information is provided by advertisers, including builders/agents/owners, or collected from publicly available sources and may not be verified under RERA. Any information provided on this website, including facts and figures, should be verified independently, including via the relevant RERA website, before entering into any transaction. PropertyWala.com is only an advertising platform to help connect buyers and sellers and is not a party to any transaction, nor shall be responsible or liable to resolve any disputes between them.

[Home](#) » [Mohali Real Estate](#) » [Projects in Mohali](#) » [JLPL Sky Gardens - Sector 66 A, Mohali](#)