

3 Bedroom Apartment / Flat for sale in Prestige Raintree Park, Varthur, Ba. 3.2 crores



★ Featured

3 Bedroom Apartment For Sale In Bangalore

Prestige Raintree Park, Varthur Road Near Whitefield, Ea...

- Project/Society: [Prestige Raintree Park](#)
- Area: 2226 SqFeet ▼
- Bedrooms: Three
- Bathrooms: Three
- Floor: Tenth
- Total Floors: Eighteen
- Facing: North
- Furnished: Unfurnished
- Transaction: New Property
- Price: 32,000,000
- Rate: 14,376 per SqFeet **+35%**
- Age Of Construction: Under Construction

Advertiser Details

Krsna Properties Concern
MADHUSUDAN WADHWANI
Chief Executive Officer
Seshadripuram, Bangalore
mob: 8088111112
tel: +91-80-23362702
mail: temptationrealtyinc.com

Scan QR code to get the contact info on your mobile
[View all properties by Krsna Properties Concern](#)

Description

Prestige Raintree Park is the brand new luxury residential Apartment project launched on Varthur Road near Whitefield, East Bangalore.

The residential enclave Prestige Raintree Park features the very best in Prestige Group's luxury living segment spread across a massive 27 acres of prime land. The project offers spacious Lakeview and lakeside 3 BHK Apartments with luxurious features.

One of the many USPs of the project is that Each apartment is expected to feature a full-length external spacious balcony, broad decks, and large windows.

Exquisite Lakeviews of Varthur Lake with Beautiful landscapes all around Prestige Raintree Park with over 65% open spaces and green covers make it more special & Elite.

The builder, Prestige Group is world-renowned and is guaranteed to bring a quality living experience to the community of Varthur Road, Whitefield, East Bangalore with brilliant architecture and equivalent lifestyle in Prestige Raintree Park. Other landmark Prestige Group apartments and villas around the project form a thriving community.

Prestige Raintree Park Location has excellent connectivity & it is ideally located at the crux of Varthur Road, Old Airport Road mere minutes from Whitefield, Marathahalli, ITPL, HSR Layout, Bellandur, as well as existing and upcoming communities & facilities.

Some of the World-class Amenities at Prestige Raintree Park include a sprawling central courtyard area, one of Bengaluru's largest clubhouse(1L sft+), landscaped gardens, a gymnasium, 3 swimming pools with lounges, recreation rooms, outdoor sports courts, children's play area, pet park, spa & Sauna, mini theatre, party hall, and meticulously planned with utmost importance to state-of-the-art 24/7 securities.

When you call, don't forget to mention that you saw this ad on PropertyWala.com.

Location

* Location may be approximate

Landmarks

Nearby Localities

[Balagere](#), [Siddapur](#), [Gunjur](#), [Whitefield](#), [Immadihalli](#), [Thubarahalli](#)

* All distances are approximate

Locality Reviews

It is a very nice locality that is close to the Star Bazar, Forum Mall, Dmart, International Schools, and Vinayaka Cinemas.

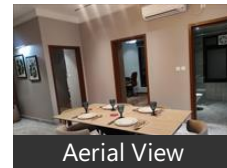
Cons:

- full traffic

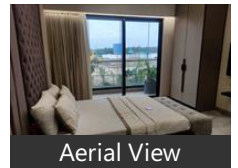
Varthur, Bangalore

Posted: Jan 24, 2024 by jytohi prasanna

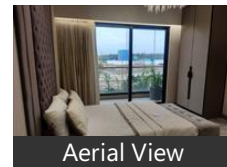
Pictures



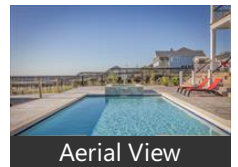
Aerial View



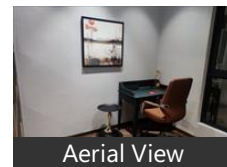
Aerial View



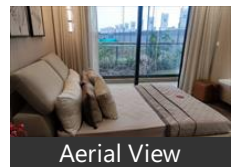
Aerial View



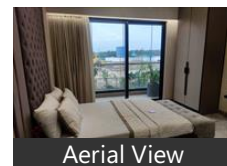
Aerial View



Aerial View

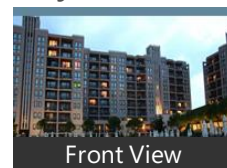


Aerial View

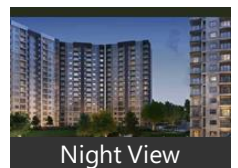


Aerial View

Project Pictures



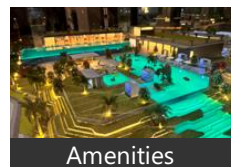
Front View



Night View



Living Room



Amenities



Clubhouse

* These pictures are of the project and might not represent the property

Project Floor Plans

Bank auction property(auction by bank) best location flat available in varthur village

Posted: Aug 12, 2022 by Nehal Gourkar

Varthur is near to many international schools. Accessibility to city. Fastest growing city, green atmosphere, good restaurants within 5 m radius.

Pros:

- Good location

Posted: Aug 19, 2015 by Trimurthy

Varthur is very near to Whitefield, Outer ring Road and Sarjapur road, Sarjapur and another route is connected from OuterRing Road, Kadubeesanahalli underpass, Marthahalli towards Panathur and Baligeri. Another route connected from Varthur is Muthsandra road connecting to Muthsandra village, which is connecting to PERIPHERAL RING ROAD.

Varthur has connectivity to number of International schools like

- 1) Greenwood high school
- 2) Oakridge
- 3) Vagdevi High school

New projects like PRESTIGE LAKE SIDE HABITAT are launched in Varthur main road, the extension of the projects is around 100 acres

A lot of projects are launched in Panathur - Baligeri- varthur road. A connectivity to prestige lake side habitat is also connected from Panathur - Baligeri- varthur road.

Roads of Varthur are very narrow,

Pros:

- Connectivity to number of International schools
- Easy accessibility to city

Cons:

- Very narrow roads

Posted: Jul 6, 2014 by Phani varma

Varthur is one of the fastest growing residential with good connectivity from Whitefield, Sarjapur road, outer ring road, Wipro corporate office. The accessibility to the above areas makes this area very good residential location.

Pros:

- 4km from Whitefield, 6.5 kms from Outer ring road, 8 kms from Wipro corporate office.

Posted: May 15, 2013 by [Shobha Sudhakar \(Vahe Projects\)](#)

Varthur, Bangalore is rated 7 out of 10 based on 5 user reviews.

Disclaimer: The reviews are opinions of PropertyWala.com members, and not of PropertyWala.com.

Explore

[Similar Properties](#)

[Properties in Varthur, Bangalore](#)

[Projects in Bangalore](#)

[Brokers in Bangalore](#)

More Information

Disclaimer: All information is provided by advertisers and should be verified independently before entering into any transaction. You may visit the relevant RERA website of your state to verify the details of this property. PropertyWala.com is only an advertising platform to help connect buyers and sellers and is not a party to any transactions, nor shall be responsible or liable to resolve any disputes between them.



Floor Plan-A



Floor Plan-B



Floor Plan-C



Floor Plan-D



Floor Plan-E



Location Map

* These floor plans are of the project and might not represent the property

Report a problem with this listing

Is this property no longer available or has incorrect information?

[Report it!](#)