

## Warehouse / Godown for rent in Alipur, New Delhi

5.04 lakhs



★ Featured

### Warehouse Constructed In Alipur

Alipur Main Road, Alipur, New Delhi - 110036 (Delhi)

- Area: 31500 SqFeet ▼
- Bathrooms: Three
- Floor: Ground
- Total Floors: One
- Furnished: Unfurnished
- Monthly Rent: 504,000
- Rate: 16 per SqFeet **-20%**
- Age Of Construction: 5 Years
- Available: Immediate/Ready to move

### Description

PEB warehouse

Current status: Ready to move.

Internal flooring: Trimix flooring, Floor load: 4 ton/sq.meter

External flooring: Interlocking Tiles

Eve height - 22 ft. & Centre height - 26 ft.

Dock nos.: 2, Dock height: Ground level.

Other amenities: Guard room, Toilet, Parking

PMG Land Aggregators LLP is the largest Industrial Real Estate Services Company that operates across (PAN) India specializing in Leasing (rentals) of Warehouses, Factories, Cold Storages, Built-to-suit (BTS) properties, Income (rent) yielding assets (ROI / Preleased). We also specialize in Land aggregation and fund investments. Headquartered in Delhi, we have regional offices at 27 cities in the country.

When you call, please mention that you saw this ad on PropertyWala.com.

### Features

Maintenance

- Water Supply / Storage

### Location

\* Location is approximate

### Locality Reviews

Alipur, New Delhi

Well developed village with facility of schools, college, hospital, market, temple, banks, etc. Kind hearted people. Peaceful place to live.

**Pros:**

- Developing market area

Posted: May 9, 2017 by Randhir Mann

Alipur area comes under Delhi MPD 2021. This area is becoming a Residential and Commercial hub. This area is developing day by day.

**Pros:**

- Availability of good shopping centers, stores, cinema halls, schools
- Farm House
- Peaceful area

Posted: Oct 8, 2014 by [Rohit Singh \(Shree Sai Baba Welfare Society\)](#)

Alipur, New Delhi is rated 9 out of 10 based on 2 user reviews.

Disclaimer: The reviews are opinions of PropertyWala.com members, and not of PropertyWala.com.

### Advertiser Details

**PMG Land Aggregators LLP**  
Pankaj Jain  
Partner

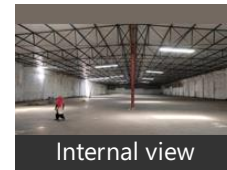
Samakha, New Delhi  
mob: 9818896670  
tel: 9811006052  
mail:  
[www.aggregators.co.in](http://www.aggregators.co.in)



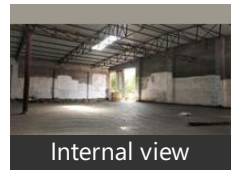
Scan QR code to get the contact info on your mobile

[View all properties by PMG Land Aggregators LLP](#)

### Pictures



Internal view



Internal view

Explore

[Similar Properties](#)

[Properties in Alipur, New Delhi](#)

[Projects in New Delhi](#)

[Brokers in New Delhi](#)

More Information

Report a problem with this listing

Is this property no longer available or has incorrect information?

[Report it!](#)

**Disclaimer:** All information is provided by advertisers and should be verified independently before entering into any transaction. You may visit the relevant RERA website of your state to verify the details of this property. PropertyWala.com is only an advertising platform to help connect buyers and sellers and is not a party to any transactions, nor shall be responsible or liable to resolve any disputes between them.