

## Warehouse / Godown for rent in Hoskote, Bangalore

3 lakhs



★ Featured

### Warehouse/ Godown For Rent At Hosakote

Hosakote Kolar Road, Old Madras Road, Hoskote, Banga..

- Area: 15000 SqFeet ▼
- Bathrooms: Four
- Floor: Ground
- Total Floors: One
- Facing: North
- Furnished: Semi Furnished
- Lease Period: 12 Months
- Monthly Rent: 300,000
- Rate: 20 per SqFeet -5%
- Age Of Construction: 2 Years
- Available: Immediate/Ready to move

### Advertiser Details

**F5K Realty**  
**Feroz Khan**  
Director  
HBR Layout, Bangalore  
mob: 7892210005  
mail: f5krealty@gmail.com  
tel: 8105299975  
www.propertywala.com/f5k-realty-bangalore

Scan QR code to get the contact info on your mobile  
[View all properties by F5K Realty](#)

### Description

**Warehouse / Godown Space for Rent At Hosakote** for which Rent is nego.

This Warehouse / Godown is close to Main Road, with facility for labor nearby, close to hospitals, bus stand, police station, fire brigade, access to transport with plenty of parking for trucks & 40ft containers.

Facilities toilets for labours, office with attached washroom. Vdf flooring, canopy done. Facility for crane, 4ft dock with dock leveller provision, lighting arrestor, fire hydrant with sprinkler facility if required. Turbo Ventilators, exhaust, natural lighting, back up, power, borewell water facility,

New construction, security room, labor room, drivers rest room, close gated 10ft compound wall with 3ft above barewire, cement Roads all around with drainage systems.

Warehouse / Godown Space for Rent at Hosakote, Kolar Road, Chintamani Rd, Sildagatta Road, Malur Road Old Madras Road for which Rent is nego.

This Warehouse / Godown is close to Main Road, with facility for labor nearby, close to hospitals, bus stand, police station, fire brigade, access to transport with plenty of parking for trucks & 40ft containers.

Facilities toilets for labours, office with attached washroom. Vdf flooring, canopy done. Facility for crane, 4ft dock with dock leveller provision, lighting arrestor, fire hydrant with sprinkler facility if required. Turbo Ventilators, exhaust, natural lighting, back up, power, borewell water facility,

New construction, security room, labor room, drivers rest room, close gated 10ft compound wall with 3ft above barewire, cement Roads all around with drainage systems.

Warehouse / Godown Space for Rent At Hosakote for which Rent is nego.

This Warehouse / Godown is close to Main Road, with facility for labor nearby, close to hospitals, bus stand, police station, fire brigade, access to transport with plenty of parking for trucks & 40ft containers.

Facilities toilets for labours, office with attached washroom. Vdf flooring, canopy done. Facility for crane, 4ft dock with dock leveller provision, lighting arrestor, fire hydrant with sprinkler facility if required. Turbo Ventilators, exhaust, natural lighting, back up, power, borewell water facility,

New construction, security room, labor room, drivers rest room, close gated 10ft compound wall with 3ft above barewire, cement Roads all around with drainage systems.

Warehouse / Godown Space for Rent At Hosakote, Kolar Road, Chintamani Rd, Sildagatta Road, Malur Road Old Madras Road for which Rent is nego.

This Warehouse / Godown is close to Main Road, with facility for labor nearby, close to hospitals, bus stand, police station, fire brigade, access to transport with plenty of parking for trucks & 40ft containers.

Facilities toilets for labours, office with attached washroom. Vdf flooring, canopy done. Facility for crane, 4ft dock with dock leveller provision, lighting arrestor, fire hydrant with sprinkler facility if required. Turbo Ventilators, exhaust, natural lighting, back up, power, borewell water facility,

New construction, security room, labor room, drivers rest room, close gated 10ft compound wall with 3ft above barewire, cement Roads all around with drainage systems.

Warehouse / Godown Space for Rent At Hosakote for which Rent is nego.

This Warehouse / Godown is close to Main Road, with facility for labor nearby, close to hospitals, bus stand, police station, fire brigade, access to transport with plenty of parking for trucks & 40ft containers.

Facilities toilets for labours, office with attached washroom. Vdf flooring, canopy done. Facility for crane, 4ft dock with dock leveller provision, lighting arrestor, fire hydrant with sprinkler facility if required. Turbo Ventilators, exhaust, natural lighting, back up, power, borewell water facility,

New construction, security room, labor room, drivers rest room, close gated 10ft compound wall with 3ft above barewire, cement Roads all around with drainage systems.

Warehouse / Godown Space for Rent at Hosakote, Kolar Road, Chintamani Rd, Sildagatta Road, Malur Road Old Madras Road for which Rent is nego.

This Warehouse / Godown is close to Main Road, with facility for labor nearby, close to hospitals, bus stand, police station, fire brigade, access to transport with plenty of parking for trucks & 40ft containers.

When you call, please mention that you saw this ad on PropertyWala.

### Features

#### General

- Power Back-up
- Centrally Air Conditioned
- Room AC
- Lifts
- High Speed Internet
- Wi-Fi

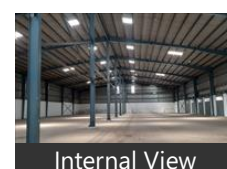
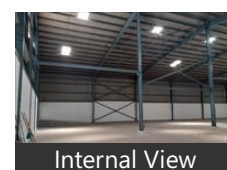
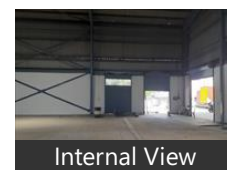
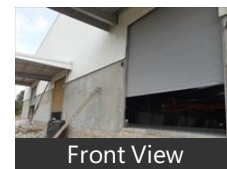
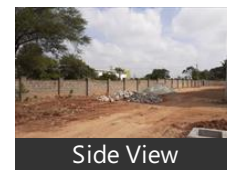
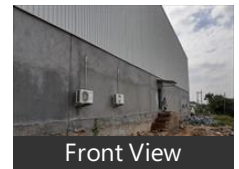
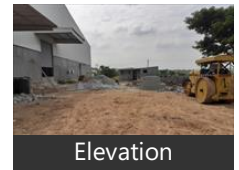
#### Lot

#### Security

- Security Guards
- Electronic Security
- Intercom Facility
- Fire Alarm

#### Exterior

### Pictures



- Private Terrace
- Balcony
- Private Garden
- Basement
- Corner Location
- Park Facing

- Reserved Parking
- Visitor Parking
- Independent Garage
- Servant Quarter

### Recreation

- Park

### Maintenance

- Maintenance Staff
- Water Supply / Storage
- RO System
- Water Softner
- Boring / Tube-well
- Rain Water Harvesting
- Waste Disposal

### Other features

- Hi Tech Warehouse
- International Standard
- PEB Structure
- VDF Flooring
- Security Room
- Cement Roads
- Compound Wall
- Roof Insulation
- Turbo Ventilators
- Ample Parking
- Truck Parking
- Container Parking
- Fire Hydrant Facility
- Sprinklers Facility
- Lightning Arrestor Facility
- Dock Leveller Provision
- Natural Lighting
- Separate Transformer
- Internal Led Lights
- Street Lights
- Canopies In Every Dock
- Barbwire On Compound Wall
- Labour Toilets
- Driver Toilets
- Driver Room
- Newly Painted
- Cafeteria Space

## Location

\* Location may be approximate

## Landmarks

### Restaurant & Shops

Babu Textiles (<0.5km), Hi Fashion Zone (<0.5km), Hopcoms (<0.5km), Chandana Fashions (<0.5km), Lakshmi Fashions (<0.5km), Veerabhadra Fashions (<0.5km), Raymond Shop (<0.5km), New Supreme Textile (<0.5km), New Satr Footwear (<0.5km), Vashini Garments (<0.5km), K P N Textiles (<0.5km), Noorani Fashion Fix (<0.5km), Subha Vastra Mandira (<0.5km), Rumana Footwear (<0.5km), S R R Footwear (<0.5km), Surtha Sarees (<0.5km), Oreng Fashion (<0.5km), Puttamma Textiles (<0.5km), New Anil Fashion (<0.5km), Manu Mens Wear (<0.5km), New Model Ladies Textiles (<0.5km), TDK Shiva Book Stall (<0.5km), Bhavani Fashions (<0.5km), Factory Outlet (<0.5km), Shri Nandi Jewellers (<0.5km), Nandan Fashions (<0.5km), Sai Venkateshwara Wines (<0.5km), Haya Boutique Center (<0.5km), Mahalakshmi Readymade (<0.5km), Indian Fashion (<0.5km), New Calcutta Big Bazaar (<0.5km), Anu Sai Footwear (<0.5km), Sagar Gents Textiles (<0.5km), Hanuman Footwear (<0.5km), New Raj Textiles (<0.5km), New Yuva Fashion Center (<0.5km), Bajalakshmi Foot Wears (<0.5km), Bapuji Textiles (<0.5km), Nayan Matching Center (<0.5km), Gopi Provision Store (<0.5km), Ganesh Costumes (<0.5km), Reddy Store (<0.5km), Rama Textiles (<0.5km), Kavery Cloth Center (<0.5km), Chowdeshwari Hand Loom Textiles (... Bloosm Boutique (<0.5km), Balaji Hand Loom Sarees (<0.5km), Crazy Style Fashions (<0.5km), Swagath Footwear (<0.5km), Star Cloth Center (<0.5km), Akshara Textile (<0.5km), Kissan Footwear (<0.5km), Hindustan Footwear (<0.5km), Imran Footwear (<0.5km), Satish Footwear (<0.5km), Fashion Adda (<0.5km), Chowdeshwari Footwear (<0.5km), Aruna Textiles (<0.5km)

### ATM/Bank/Exchange

Federal Bank-Hoskote (<0.5km), Federal Bank (<0.5km), Union Bank of India (<0.5km), The Town Co Operative Bank Hosko... Axis Bank (<0.5km), The Town Co-Operative Bank-Hosko.. State Bank of India (<0.5km), Bank of Baroda (<0.5km), Canara Bank-Hoskote (<0.5km), Karnataka Bank (<0.5km), Karnataka Bank-Hoskote (<0.5km), Canara Bank (<0.5km), HDFC Bank (<0.5km)

### Hospitals & Clinics

[more...](#)

## Locality Reviews

Hoskote, Bangalore

I have loved the place greenery place and nice place there is a farmland. Every minute you can breathe fresh air and you can see flower garden there. We can see spar hypermarket there. You can find even decathlon nearby. There is a Narasapura Industrial area

Posted: May 10, 2021 by Zazar Khan

Best amenities, close to schools and colleges , hospitals , market place , adjacent to main road, channai NH, fully developing area,

### Pros:

- Benefit from capital growth if you buy at a good price and the property increases in value.

### Cons:

- Developing area

Posted: Aug 28, 2019 by Manideep k

Hoskote is fastest growing place, and many great schools are closer. well connected to various places like ITPL, AIRPORT, OLD MADRAS Road, MALUR, Chintamani

**Pros:**

- Well connected
- Good schools
- Malls and shops coming up

**Cons:**

- Good hotels should come

Posted: Jan 29, 2019 by Venkat CK

Hoskote is the most rapidly growing locality in East Bengaluru and enjoying excellent connectivity with rapid infrastructural developments, Industrial area, Residential communities, and all basic requirements. The demand for the location will be highly appreciated in terms of per sqft Price in coming days... In the last few years, land prices in Hoskote have witnessed tremendous growth at 40 %..

Location Advantages :

15 Mins Drive to ITPL and Whitefield.

15 Mins Drive From KR Puram Hanging Bridge.

20 Mins Drive to Devanahalli International Airport.

Hoskote Industrial Area in 960 Acres.

Close to Narsapura Automobile Industrial Area in Which All Major Plants Like HONDA Two Wheeler, Scania Truck Maker, Mahindra & Mahindra Aero SEZ And Many More...

Proposed Rajiv Gandhi HP R&D University In 140 Acres, sidhalaghatta road, Hoskote.

Hoskote is Proposed For Satellite Township Ring Road.

Proposed 284 Kms STRR Road Is Passing through Hoskote.

Proposed 300 Acres Bangalore Logistical Company in Hoskote

**Pros:**

- Chennai express Highway
- Cool wether
- NH 35, NH 4,

Posted: May 9, 2017 by [Sai Ram \(Ggr Housing India\)](#)

Hoskote is a very good future potential area with a lot of industries & a very good developing area.

**Pros:**

- Good Aecessability

Posted: Apr 15, 2016 by Avinash Gupta

Hoskote is one of fast developing area and there are en-numbers of industries which have took place. The place is very near to Airport, well connectivity, six tracks roads, hospitals, Schools, Colleges and transport facilities.

**Pros:**

- Good Location

Posted: Nov 4, 2015 by [Johnson \(S J Developers\)](#)

Hoskote is one of the fastest growing residential and industrial hubs around Bangalore City and identified many villa plots and houses are in progress. The place also have a proposed Chennai express highway is in progress.

**Pros:**

- Best Location

Posted: Jul 7, 2015 by Rama

Hoskote is a new growing smart city of Bangalore with all the amenities in the neighborhood. The place has best schools, colleges, markets near by.

**Pros:**

- Well Planned Area
- Availability of good shopping centers, stores, cinema halls, schools
- Good living atmosphere
- Calm and peaceful area

Posted: Feb 9, 2015 by [Khan Kareem \(Network Ventures\)](#)

Hoskote is one of the fastest growing areas of Bangalore, with upcoming of Honda two wheeler plant, university, near to philgumpe industrial area, near to Malur. So its proximity to national highway makes it one of the fastest growing areas.

**Pros:**

- A lot of development activities
- Just 20 minutes from Bangalore (NH)
- Proximity to national highway

**Cons:**

- Pressure on infrastructure
- Need widening of roads

Posted: Apr 13, 2014 by Basavaraj J

Investors looking Hoskote as Future Neo Bangalore as the proposed Nandagudi IT SEZ, IT AERO HARDWARE Rich park, Rajiv Gandhi Institute of Petroleum Technology are near by Hoskote. Surrounded by Narsapur Industrial area, Pilligumpa Industrail Area creating 2 lakh Employment.

**Pros:**

- Near to KIA
- Near to IT, AERO and Hardware coming up near Budhigere
- Neat to ITPL as well as Byappanahalli Metro station

**Cons:**

- Kaveri Water yet to come
- Need to boost up Government Infrastructures

Hoskote, Bangalore is rated 8 out of 10 based on 10 user reviews.

Disclaimer: The reviews are opinions of PropertyWala.com members, and not of PropertyWala.com.

## Explore

[Similar Properties](#)

[Properties in Hoskote, Bangalore](#)

[Projects in Bangalore](#)

[Brokers in Bangalore](#)

## More Information

## Report a problem with this listing

Is this property no longer available or has incorrect information?

[Report it!](#)

**Disclaimer:** All information is provided by advertisers and should be verified independently before entering into any transaction. You may visit the relevant RERA website of your state to verify the details of this property. PropertyWala.com is only an advertising platform to help connect buyers and sellers and is not a party to any transactions, nor shall be responsible or liable to resolve any disputes between them.