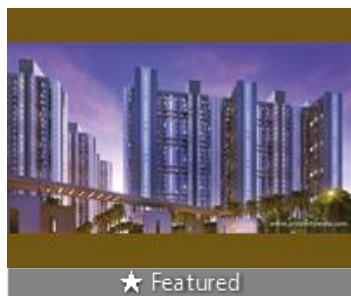


2 Bedroom Apartment / Flat for sale in Lodha Amara, Kolshet, Thane

85 lakhs



2 Bedroom Apartment For Sale In Kolshet, Thane

Lodha Amara, Kolshet, Thane - 400607 (Maharashtra)

- Project/Society: [Lodha Amara](#)
- Area: 557 SqFeet ▾ ■ Bedrooms: Two
- Bathrooms: Two
- Transaction: Resale Property
- Price: 8,500,000
- Rate: 15,260 per SqFeet **-10%**
- Age Of Construction: 4 Years
- Possession: Immediate/Ready to move

Advertiser Details

360 Realtors
Avinash Verma
General Manager

mob:
tel:
mail:
<https://www.360realtors.com>

Scan QR code to get the contact info on your mobile
[View all properties by 360 Realtors](#)

Description

Lodha Amara is spread over 40 acres of space. Its landscape with its serene environment offers a lifestyle which is very rarely experienced in cities, and the purest air in Kolshet, Thane West. Lodha Amara tends to offer space variants for all its residents with a wide variety of 2 BHK Flats built over 1300sqft. Located just minutes away from the Eastern Express Highway and Pokhran Road, This neighborhood provides easy access to some of the city's best malls, schools, and Hospitals. In the fast-growing metropolis of Thane, this project tends to make brimming with rich experiences and the time to savour them. Pursue your passions, enjoy time with friends, bond with family and community, be one with nature. Even while you are just minutes away from the business hubs and urban attractions of Thane.

Features & Amenities

- Swimming pool with kids pool
- FIFA Standard Football Ground
- Ganesh Temple
- Fully equipped air conditioned gymnasium
- Basketball court & Multipurpose court
- Senior citizen area
- Cycling Track - Jogging Track
- Indoor games room (games arcade)
- Multipurpose hall
- Aerobics /Yoga
- Six Club Houses
- 4 Acre Cricket Ground
- Party area with lawn
- Toddlers soft play area

When you contact, don't forget to mention that you found this ad on PropertyWala.com.

Location

* Location may be approximate

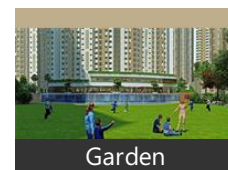
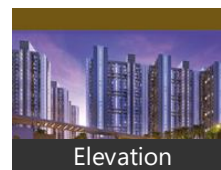
Landmarks

Nearby Localities

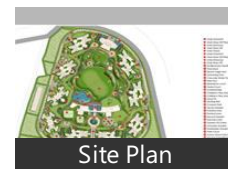
[Sandoz Baug](#), [Kolshet Road](#), [Bhrahmand](#), [Ghodbunder Road](#), [Dokali Pada](#), [Dhokali Naka](#), [Kalher](#), [Patlipada](#), [Thane West](#), [Majiwada](#)

* All distances are approximate

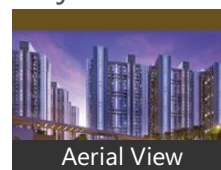
Pictures



Floor Plans



Project Pictures



* These pictures are of the project and might not represent the property

Project Floor Plans



Project Reviews

Lodha Amara

Among many Lodha Projects in the region, Amara has become one of the most preferred destination for new home buyers. This is majorly because of the project quality in itself apart from its Serene but central location.

Pros:

- Construction quality
- Amenties
- Location

Cons:

- Till upcoming Metro becomes functional connectivity may be a little wanting

Posted: Nov 16, 2021 by [A.G \(Landshoppe\)](#)



* These floor plans are of the project and might not represent the property

Lodha Amara Thane is rated 7 out of 10 based on 1 user reviews.

Disclaimer: The reviews are opinions of PropertyWala.com members, and not of PropertyWala.com.

Explore

[Similar Properties](#)

[Properties in Kolshet, Thane](#)

[Projects in Thane](#)

[Brokers in Thane](#)

More Information

Report a problem with this listing

Is this property no longer available or has incorrect information?

[Report it!](#)

Disclaimer: All information is provided by advertisers and should be verified independently before entering into any transaction. You may visit the relevant RERA website of your state to verify the details of this property. PropertyWala.com is only an advertising platform to help connect buyers and sellers and is not a party to any transactions, nor shall be responsible or liable to resolve any disputes between them.