

## Warehouse / Godown for rent in E M Bypass Extension, Kolkata

1.5 lakh



### Warehouse For Rent In Nazirabad Anandapur Ruby Hospital Mor Em Bypass

Nazirabad Anandpur Road Connected By EM Bypass Rub.

- Area: 6000 SqFeet ▼
- Bathrooms: Two
- Floor: Ground
- Monthly Rent: 150,000
- Rate: 25 per SqFeet
- Age Of Construction: 1 Years
- Available: Immediate/Ready to move

### Advertiser Details

**Houseaa Realty**  
**Bhairab Sanyal**  
Sales Director

R B Connector, Kolkata  
mob: 8282862636  
tel: 8276022888  
mail: houseaa1@gmail.com  
www.propertywala.com

Scan QR code to get the contact info on your mobile  
[View all properties by Houseaa Realty](#)

### Description

warehouse for rent najirabad Anandpur close to Ruby hospital bypass connected by airport railway station 40 feet main road available parking

When you contact, don't forget to mention that you found this ad on PropertyWala.com.

### Features

#### Lot

- Corner Location

#### Exterior

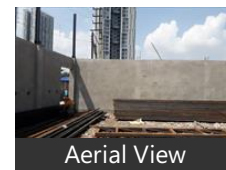
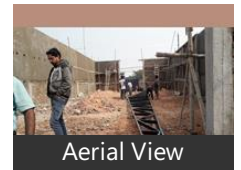
- Reserved Parking

#### Maintenance

- Water Supply / Storage
- Waste Disposal

### Location

### Pictures



\* Location may be approximate

### Landmarks

#### Nearby Localities

[Anandapur](#), [Ruby General Hospital](#), [Ruby Hospital Main Rd](#), [Madurdaha](#), [P.Majumder Road](#), [Purbalok](#), [Anandapur](#), [Ruby General Hospital](#), [Ruby Hospital Main Rd](#), [Madurdaha](#), [P.Majumder Road](#), [Singha Bari](#), [Purbalok](#), [Anandapur](#), [Ruby General Hospital](#), [Ruby Hospital Main Rd](#), [Madurdaha](#), [Basanti Highway](#), [P.Majumder Road](#), [Purbalok](#), [Anandapur](#), [Ruby General Hospital](#), [Ruby Hospital Main Rd](#), [Madurdaha](#), [Basanti Highway](#), [P.Majumder Road](#), [Purbalok](#), [Nazirabad](#), [Anandapur](#), [Chowbaga](#), [Ruby General Hospital](#), [Ruby Hospital Main Rd](#), [Madurdaha](#), [Basanti Highway](#), [P.Majumder Road](#), [Purbalok](#), [Nazirabad](#), [Anandapur](#), [Chowbaga](#), [Ruby General Hospital](#), [Ruby Hospital Main Rd](#), [Madurdaha](#), [Basanti Highway](#), [P.Majumder Road](#), [Purbalok](#), [Nazirabad](#), [Anandapur](#), [Kasba Golpark](#), [Ruby Hospital Main Rd](#), [Madurdaha](#), [Basanti Highway](#), [P.Majumder Road](#), [Purbalok](#), [Nazirabad](#), [Anandapur](#), [Ruby General Hospital](#), [Kasba Golpark](#), [Ruby Hospital Main Rd](#), [Madurdaha](#), [P.Majumder Road](#), [Nazirabad](#), [Anandapur](#), [Kasba Golpark](#), [Ruby Hospital Main Rd](#), [Madurdaha](#), [P.Majumder Road](#), [Nazirabad](#), [Anandapur](#), [Kasba Golpark](#), [Ruby Hospital Main Rd](#), [Madurdaha](#), [P.Majumder Road](#)

\* All distances are approximate

### Locality Reviews

E M Bypass Extension, Kolkata

Hiland Park is a very reputed society in kolkata . Centrally located with all facilities including the pool , gym etc

#### Pros:

- centrally located

#### Cons:

- for a rich crowd

Posted: Jun 12, 2017 by Michelle Dunne

E M Bypass Extension, Kolkata is rated 5 out of 10 based on 1 user reviews.

Explore

[Similar Properties](#)

[Properties in E M Bypass Extension, Kolkata](#)

[Projects in Kolkata](#)

[Brokers in Kolkata](#)

More Information

Report a problem with this listing

Is this property no longer available or has incorrect information?

[Report it!](#)

**Disclaimer:** All information is provided by advertisers and should be verified independently before entering into any transaction. You may visit the relevant RERA website of your state to verify the details of this property. PropertyWala.com is only an advertising platform to help connect buyers and sellers and is not a party to any transactions, nor shall be responsible or liable to resolve any disputes between them.