

1 Bedroom Apartment / Flat for rent in Prabhadevi, Mumbai

20,000



1-RK Semi-Furnished At PB Marg, In Prabhadevi - Worli.

Kabir Ashram Building, Pandurang Budhkar Marg, Prabha.

- Area: 225 SqFeet
- Bedrooms: One
- Bathrooms: One
- Floor: Fourth
- Total Floors: Five
- Facing: South
- Furnished: Semi Furnished
- Lease Period: 12 Months
- Monthly Rent: 20,000
- Rate: 89 per SqFeet -5%
- Age Of Construction: 15 Years
- Available: Immediate/Ready to move

Advertiser Details

KK Raathi

CxO / Chairman / Director / President



Prabhadevi, Mumbai

mob: 9930462656

tel:

mail:

www.propertywala.com/U791453572



Scan QR code to get the contact info on your mobile

Description

1-RK Semi-furnished at PB Marg, in Prabhadevi - Worli. Comfortable 1RK with bathroom fixtures, geyser, WC, and electrical fittings. Ample storage space.

When you call, don't forget to mention that you found this ad on PropertyWala.com.

Features

Security

- Security Guards

Maintenance

- Maintenance Staff

Interior

- Woodwork

Other features

- Geyser
- WC
- Storage Units
- Comfortable Convenient Residential Area

Location

* Location may be approximate

Landmarks

Hospitals & Clinics

Dr Shubhangi Nevgii (<0.5km), Dr Naina S Chube (<0.5km), DR. Shashank Chube (<0.5km), Dr Vitthal C. Prabhu (<0.5km), Dr Nagesh Shankar (<0.5km), Jain Health Clinic (<0.5km), Welcome Medical Centre (<0.5km), Jain Diagnostic Centre (<0.5km), SRL Diagnostics Parel Mumbai (<0.5k.. Ayush Shakti Ayurvedic Health Centr.. Sajan Optics (<0.5km), Alta Laboratories (<0.5km), Dental Cafe (<0.5km), Nucleus Hospitals (<0.5km), Sabka Dentist (<0.5km), DR. Bharat M. Porwal (<0.5km), Shiv Clinic (<0.5km), BMC Dispensary (<0.5km), Urban Smile (<0.5km), Complete Mind And Body (<0.5km), Health R Choice (<0.5km), Shivam Clinic (<0.5km), Shri Prabhadevi Clinic (<0.5km), Dr Muffazal Lakdawala (<0.5km), Digestive Health Institutes (<0.5km)

Restaurant & Shops

Shri Sai Provision Stores (<0.5km), Rajesh Mens Wear (<0.5km), Bombay Dyeing (<0.5km), Radhakrishnan Cloth Stores (<0.5km), Keshavji Rayashi & Company (<0.5km Pravin General Store (<0.5km), Laxmi Art Stationery (<0.5km), Shri Sawami Samarth Stores (<0.5km), Sharad Stationery (<0.5km), Laxmi Stores (<0.5km), Ramesh Kirana Stores (<0.5km), D G Barde General Stores (<0.5km), Sagar Oil Shop and General Store (<0.5km), Navkar Agency (<0.5km), Sagar Oil Shop and Tea Centre (<0.5k.. Ashok Grain and General Store (<0.5k.. Sadanand Bar (<0.5km), Siddhi Vinayak Oil Soap Stores (<0.5k.. Vijay General Store (<0.5km), Gurukripa Stores (<0.5km), Ratanshi Bhimshi & Co (<0.5km), Shakeel General Store (<0.5km), Sundaram Supermarket (<0.5km), Ambika Traders (<0.5km), Santosh Stores (<0.5km), Maru General Stores (<0.5km), Jay Ambe General Store (<0.5km), Jay Santoshi Mata Masala and (<0.5k... Kaishantabai Mahadev Hule Mandai ... D N Brothers (<0.5km), Aasu Jivraj Meva Masale (<0.5km), Chheda Tea Center (<0.5km), Kurla General Stores (<0.5km),

Pictures



Living Room



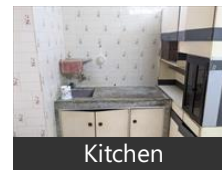
Living Room



Living Room



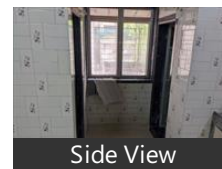
Living Room



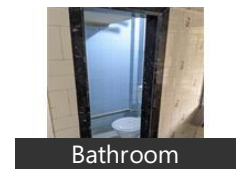
Kitchen



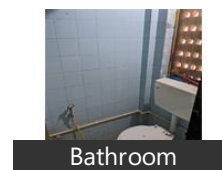
Side View



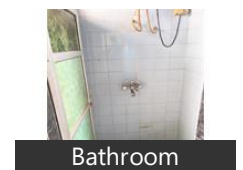
Side View



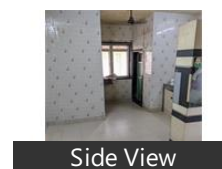
Bathroom



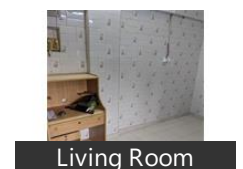
Bathroom



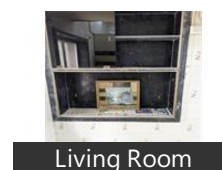
Bathroom



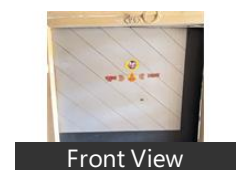
Side View



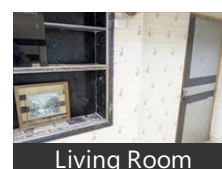
Living Room



Living Room



Front View



Living Room

Shri Siddhivinayak Provision Stores (<. Anusaya Best Bhelpuri House (<0.5km Shivkrupa Provision Stores (<0.5km), Sai Creation (<0.5km), Sai General Stores (<0.5km), Only (<0.5km), Rocky Star Cocktail Bar (<0.5km), [more...](#)

Locality Reviews

Prabhadevi, Mumbai

Prabhadevi is ideally located equidistantly, from the city's old business district of Nariman Point and its new powerhouses of Lower Parel and Bandra-Kurla Complex. In the name of road connectivity, most of the city's arterial roads connect and converge on Prabhadevi. The 8 lane (one way) Bandra-Worli Sealink is an architectural marvel and a sure shot way to beat the rush hour traffic. Wide tree lined avenues and immaculately maintained roads, mean than driving here is bliss. Add to that the proximity to Lower Parel, Mahalaxmi and Bombay Central stations, and you have a settlement that is never too far from any place in the city.

Prabhadevi is home to one of Mumbai's most iconic temples, the Siddhivinayak Ganesha. However this area is one of Mumbai's most forward thinking and cosmopolitan areas with several communities as diverse as Jains, Hindus, Parsis and even Christians calling it home. What makes Prabhadevi all the more appealing as a residential locality is the definitely erudite feel that the presence some of India's leading intellectuals like movie actors, playwrights and social scientists in this area lends to it.

Home to some of Mumbai best schools and colleges, Prabhadevi is definitely one of the best areas to live in, when it comes to education. Noteworthy institutions in this area include Lala Lajpatrai College and Dadar Catering College.

Prabhadevi is an interesting mix of old world charm and modern infrastructure. A beautiful testament to the contradiction that makes the city what it is.

Prabhadevi is in a plum location for the shopaholic in you. Thinking high street, explore Phoenix Mills or Palladium at Lower Parel. In the name of malls, head down to Atria in Worli, or SoBo Central in Mumbai Central, if you're needs are a little more budget oriented or 'grey market-ish' there's always Heera Panna to explore.

Prabhadevi with its unique location advantage is rather close to some of the city's most trusted hospitals. Lilawati in Bandra, Seven Hills in Parel, Jaslok at Pedder Road and Breach Candy Hospital are all extremely close by. For day to day ailments and pediatric necessities a range of doctors and polyclinics dot the area, and their services can be availed of by appointment or simply walking in.

Pros:

- Largest Land Parcel(5.5acres) of Prabhadevi.
- Uninterrupted Sea View
- Best of the Modern Amenities

Cons:

- Congestion during festivals because of Temples.

Posted: Feb 26, 2016 by [Shashank Chaturvedi \(Propnprofit Realty\)](#)

Prabhadevi is one of the most sought after areas in Mumbai, having the Siddhivinayak Temple and a hub of some of the very prominent Towers in Mumbai

Pros:

- Siddhivinayak Temple

Cons:

- Traffic congestion

Posted: Oct 17, 2013 by [Pawan Sharma \(Luxury Property Estates\)](#)

Prabhadevi is the place where all new development projects are coming up. Famous landmarks in the area are Siddhi Vinayak temples, and Ravindra Natya Mandir. Very close to Shivaji Park.

Pros:

- Centrally located between Bandra and South Mumbai
- Close to Phoenix Mall
- Good residential apartments in the area

Cons:

- Grocery stores do not keep high end stuff
- Area still under development

Posted: Aug 15, 2013 by [Sunjay Wadhwa \(Rainbow Realtors\)](#)

Prabhadevi has transformed into a ultra modern neighborhood in Mumbai. Huge towers like Sheth beaumont towers are located here. Many car showrooms are located here which includes the Mumbai Lamborghini showroom and the Mercedes showroom. The sacred Siddhivinayak temple is located here. Real estate prices have also shot up here in the recent years. Passport office is located here. Its close proximity to Dadar also adds to its advantage. It is a good place to stay at.

Pros:

- Siddhivinayak temple
- Ahuja towers
- Lamborghini showroom
- Close proximity to Dadar

Cons:

- Traffic

Posted: Jun 22, 2013 by [Kumar M \(Turf Consultants\)](#)

Even as Worli and Bandra vie with each other for pre-eminence as Mumbai's commercial real estate hotspots, Prabhadevi – Mumbai's oldest and most established locations – stands in a class uniquely its own by virtue of its extremely favorable geographical placement and connectivity. For this reason – and for all practical purposes – Prabhadevi is the heart of Mumbai. For this reason, Prabhadevi has historically proved to be so popular that the market itself is near saturation point in terms of its residential property market. With these developments raising the commercial space equation in Mumbai's most advantageously connected location, it can be anticipated that redevelopment of many of the existing buildings in and around Prabhadevi will follow as a natural consequence.

In any case, Prabhadevi real estate profile is about to undergo a well-deserved and long overdue metamorphosis as it finally makes its debut in the Grade A office segment. The up-tick in commercial real estate activity in Prabhadevi will lead also to increased demand for residential properties there as well as the surrounding areas. In Prabhadevi the current residential rates are between Rs. 40000 - 60000/sq.ft.

One can expect these figures to change as Prabhadevi begins to evolve as a Grade A+++ office destination.

Pros:

- *Very close to religious places*
- *ITC seven star Hotel & world-class shopping areas in the vicinity.*
- *20 minutes from commercial hubs Nariman Point & Bandra-Kurla Complex.*

Cons:

- *Higher Rates*

Posted: Apr 24, 2013 by [Rizwan Shaikh \(Mumbai Blocks\)](#)

Prabhadevi, Mumbai is rated 7 out of 10 based on 5 user reviews.

Disclaimer: The reviews are opinions of PropertyWala.com members, and not of PropertyWala.com.

Explore

[Similar Properties](#)

[Properties in Prabhadevi, Mumbai](#)

[Projects in Mumbai](#)

[Brokers in Mumbai](#)

More Information

Report a problem with this listing

Is this property no longer available or has incorrect information?

[Report it!](#)

Disclaimer: All information is provided by advertisers and should be verified independently before entering into any transaction. You may visit the relevant RERA website of your state to verify the details of this property. PropertyWala.com is only an advertising platform to help connect buyers and sellers and is not a party to any transactions, nor shall be responsible or liable to resolve any disputes between them.