

Mahima Panorama - Jagatpura, Jaipur



2BHK, 3BHK Residential Apartments in Jagatpura, Jaipur.

Mahima Real Estate Pvt. Ltd. presents beautiful 2BHK and 3BHK Residential Apartments in Mahima Panorama at Jagatpura, Jaipur.

- Project ID : J919059761
- Builder: Mahima Real Estate Pvt. Ltd.
- Properties: Apartments / Flats, Independent Houses
- Location: Mahima Panorama, Jagatpura, Jaipur (Rajasthan)
- Completion Date: Dec, 2015
- Status: Started

Description

Mahima Panorama is one of the very special residential projects of a well-known real estate group that is **Mahima Real Estate Pvt. Ltd.** The project is offering beautiful **2BHK** and **3BHK** residential apartments in various sizes starting from **1086 Sq Ft** to **1622 Sq Ft** in very reasonable price which can be easily affordable by you. This is a unique residential project of its builder it is a well-managed project where you will find 70% open area for different recreational activities and a place of very beautiful gardens, excellent landscapes & lots of trees. It is designed to inspire the creative spirit as well as soothe the meditative mind. As its name indicates, Mahima Panorama is an optimal view of a truly enriched living. This beautiful project contains 17 towers and 861 units that are located at a well-connected location of Jagatpura, Panorama is spread across 16 acres of beautiful green land.

Location - Jagatpura, Jaipur.

Type - 2BHK and 3BHK Residential Apartments

Size - 1086 Sq.Ft to 1622 Sq.Ft

Price - On Request

Amenities

- Health Club (Steam bath, Sauna, Jacuzzi, Message parlour)
- Aerobics & Gymnasium
- Badminton courts
- Pool table, Carrom, Chess, Billiards / Pool & Card Room
- Music & Dance / Multipurpose Room
- Table tennis
- Swimming Pool with Splash Pool
- Library
- Ladies Kitty Room
- Day Care centre
- Common Center
- Adequate points with modular switches
- Light fittings in entire apartment
- Concealed copper wiring
- Children friendly electrical connection
- Provision for inverter in Wiring

Facilities

- Special paving entry
- Entrance security cabin
- Senior Citizen's corner
- Reflexology path
- Water Fountain / Waterfall
- Children's play area
- Aroma Garden
- Circular Trellies seater
- Feature wall to Pool area
- Main pool
- Pool Deck
- Party lawn
- Children's Pool
- Pathway
- Bamboo Grove
- Yoga corner
- Barbeque Corner
- Trellies Overlooking party lawn
- Skating Rink
- Lily pond
- Jogging path
- Youth corner
- Ramp with basement

- Drive way
- Cycling tracking for kids
- Golf puttings
- Guest parking

Mahima Real Estate Pvt. Ltd. is leading real estate group of India that is a world of yours with happiness gaiety and mirth, a world where you develop the future from the spaces of today, a world where you and your beloved ones grow, a world where your ambitions are founded and get their flight, a world of variety and serenity. The liability has been tedious as we dream for you. The group let it define its actions. Mahima group has known the dreams come easy but to translate as well as construct them into reality isn't a child's game. Its vision is to be one of the leading global real estate construction companies recognized for providing safe, reliable & innovative residential and commercial projects by adopting & implementing modern technologies as well as standards in construction business to create long term investment opportunities for our clients.

Features

Luxury Features

- Power Back-up ■ Centrally Air Conditioned
- Room AC ■ Lifts ■ RO System ■ Water Softner
- High Speed Internet ■ Wi-Fi

Security Features

- Security Guards ■ Electronic Security
- Intercom Facility ■ Fire Alarm

Lot Features

- Private Terrace ■ Balcony ■ Corner Location
- Park Facing

Interior Features

- Woodwork ■ Modular Kitchen
- Feng Shui / Vaastu Compliant

Interior

- Marble Flooring

Exterior Features

- Reserved Parking ■ Visitor Parking
- Independent Garage ■ Basement

Recreation

- Swimming Pool ■ Park ■ Fitness Centre / GYM
- Club / Community Center

Maintenance

- Maintenance Staff ■ Water Supply / Storage
- Rain Water Harvesting ■ Waste Disposal
- RO System ■ Water Softner

Commercial Features

- Cafeteria / Food Court ■ Conference room ■ ATM
- Service / Goods Lift ■ High Speed Internet / Wi-Fi

General

- Power Back-up ■ Room AC ■ Lifts

Other features

- Age of Construction: New Construction ■ 3 balconies
- Power Back Up ■ Lift ■ Rain Water Harvesting
- Club House ■ Swimming Pool ■ Gymnasium
- Park ■ Reserved Parking ■ Security ■ Water Storage
- Vaastu Compliant ■ Service/Goods Lift
- Visitor Parking ■ Maintenance Staff
- Waste Disposal ■ RO Water System ■ Piped Gas
- Immediately ■ Furnished ■ Garden/Park Facing
- Flat is fully furnished with AC in all room Sofa
- dinning Table ■ Beds with mattresses ■ TV
- Gysers ■ Light ■ Fans
- Modular Kitchen with Chimney and Hob

Gallery

Pictures



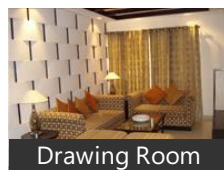
Front View



Side View



Aerial View



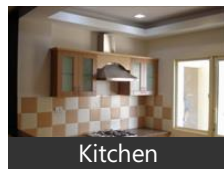
Drawing Room



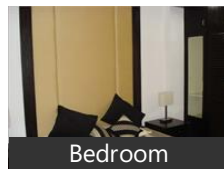
Living Room



Dinning Room



Kitchen



Bedroom

Floor Plans



Location Map



2BHK 1086 Sq.Ft



2BHK 1143 Sq.Ft



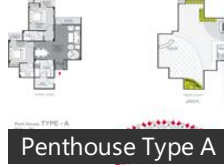
3BHK 1442 Sq.Ft



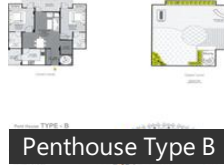
3BHK 1593 Sq.Ft.



3BHK 1622 Sq.Ft



Penthouse Type A



Penthouse Type B



Penthouse Type C



Penthouse Type D



Penthouse Type E

Location

Landmarks

Transportation

Jaipur International Airport (<3km), Ajmeri Gate Taxi Stand (<13km), Metro Cabs Pvt. Ltd (<4km), Taxi & Cab Services Jaipur (<14km), RSRTC Bus Station (<6km), Rajasthan Car Tours (<18km), Durgapura Railway Station (<6km), Taxi Stand (<3km), Sanganer Railway Station (<8km), Auto Taxi Stand (<15km), Jagatpura Taxi Stand (<1km), Jln Marg Bus Stop (<10km), City Bus Stand (<6km), Mansarover Metro Station (<12km), Gandhi Nagar Railway Station (<7km.. DCM Bus Stand (<14km), Durgapura Bus Station (<5km), Aamrapali Circle Bus Stop (<16km), Kaveri Path (<12km)

Offices

Business Post Centre (<13km), Raj Aangan (<4km), Rajasthan High Court (<11km), Muhana Mandi Police Station (<12km India Post office (<1km), Vaishali Nagar Post Office (<17km), post office (<6km), India Post Office (<13km), Sanganer Thana (<5km), Vaishali Nagar Community Center (<.. Narain Motor Agency Private Limited.. Gandhi Nagar Post Office (<7km), Dubai Visa Company (<4km), Durgapura Post Office (<5km), Gandhi Nagar Police Station (<9km), 22 Godowns Post Office (<11km), Model Town Post Office (<2km), Hawk Security & Investigating Servic... Sector 3 Post Office (<9km), Police Station Varun Path (<11km)

Hospitals & Healthcare

Fortis Hospital (<3km), Santokba Durlabhji Memorial Hospit... Zivaya Spa (<12km), Cambay Golf Resort Jamdoli (<11km), Apex Hospital Pvt. Ltd. (<3km), SHARDA DENTAL HOSPITAL & AEST.. Jaipur Hospital (<9km), Tagore Hospital & Research Institute... Monilek Hospital (<8km), SMS Hospital (<11km), Pride Amber Vilas Resort (<10km), NK DENTAL HOSPITAL (<9km), Jain ENT Hospital (<9km), Anand Hospital & Eye Centre (<12km. Sahai Hospital (<9km), Walia Dental Clinic (<13km), PITAMBRA TOURS & TRAVELS® (<1... Rungta Hospital (<4km), Heart And General Hospital (<12km), Golds Gym (<4km)

Education

Subodh Public School (<9km), St Soldier Public School (<12km), Neerja Modi School. (<10km), Rajasthan University (<8km), Maheshwari Public School (<9km), Ryan International School (<9km), Step By Step School (<16km), Poornima College of Engineering (<1.. St. Wilfred College (<9km), SMS Medical College (<11km), Tagore NRI International School (<8k.. Jaipur National University (<5km), Global Technical Campus (<7km), Jaipur Engineering College and Resea.. Lal Bahadur Shastri College (<9km), Poddar International College (<8km), Hindustan International Academy (<... Bharatiya Vidya Bhavan Vidyashram ... International College for Girls (<7km), Seedling Public School (<8km)

Religious Places

Birla Mandir (<9km), Galtaji (<14km), BAPS Shri Swaminarayan Mandir (<1... Govind Dev Ji Temple (<8km), ISKCON (<10km), Raja park Gurudwara (<10km), Ayappa Mandir (<6km), Shwetambar Jain Dadabari (<7km), Hanuman Temple (<9km), Dhamma Thali Vipassana Centre (<1... JAIN TEMPLE (<11km), Digambar Jain Temple (<5km), Shree Digambar Jain Atishya Shetra M. Sun Temple of Jaipur (Surya Mandir)... Brihaspati Dham (<7km), Bhishtiyon Ki Choti Masjid (<13km), Chulgiri (<10km), Shani Mandir (<10km), Hans Vihar Mandir (<7km), gurumukh dwar amrapur dwar (<13k..

Recreation

Sawai Mansingh Stadium (<10km), Jaipur Zoo (<12km), Raj Mandir Cinema (<13km), M. P. Birla Planetarium (<11km), Albert Hall Museum (<12km), Entertainment Paradise (<4km), Central Park (<11km), BIG Cinemas Galaxy (<6km), Inox Vaibhav Vaishali Nagar (<17km), Jawhar Circle (<3km), Nidhi Art Gallery (<8km), Cinepolis India Pvt Ltd (<4km), Statue Circle (<12km), Rajasthan Images (<10km), Tilak Park (<9km), INOX Cinema Hall (<12km), Museum of Indology (<10km), EP Multiplex (<4km), Minerva Cinema (<12km), Ram Niwas Garden (<12km)

Restaurants & Clubs

Spice Court (<13km), The Fern (<4km), Anokhi Cafe (<12km), Jawahar Kala Kendra (<7km),

Mansingh Towers (<14km), Niros Restaurant (<13km), Hotel Laxmi Niwas (<11km), Hotel Pratap (<10km), LMB Hotel (<13km), Sethias Danapani Restaurant (<13km), Divine Boutique Hotel (<10km), Surya Mahal (<13km), Hotel Classic Holidays (<12km), The Lalit Jaipur (<2km), The Rock (<12km), chitrakatha-a boutique hotel in jaipu... Copper Chimney Restaurant (<13km), Hotel Safari (<9km), Nibs Cafe (<9km), V2 Fine Dining Restaurant (<11km)

Banks & ATMs

State Bank of Bikaner & Jaipur (<10k... Citi Bank (<13km), Syndicate Bank (<10km), BOI (<7km), Union Bank Regional Office (<8km), IDBI Bank Ltd. (<10km), SBI ATM (<5km), Union Bank Of India (<9km), Axis Bank (<9km), Destimoney Enterprises Pvt.Ltd. (<12... IDBI (<13km), Home Loan Interest Rates Jaipur (<13.. Dena Bank (<4km), Oriental Bank Of Commerce (<16km), Gold Loan Jaipur (<13km), State Bank of India (<10km), Bank of Baroda ATM (<9km), Vidya Sagar Career Institute Ltd. (<9k... N L Bhatia (<11km), Central Bank of India (<13km)

Shopping

World Trade Park (<4km), Anokhi Cafe (<12km), Jaipur Rugs Company Pvt. Ltd. (<6km. Gaurav Towers (<4km), The Gem Palace (<13km), Nibs Cafe (<9km), Metropolitan (<11km), Rana Sarees (<14km), Soma Shop (<12km), Amrapali Jewels (<13km), Big Bazaar (<6km), Tapri~ The tea house (<9km), Bake Hut (<13km), Crystal Palm (<11km), Royal Enfield (<13km), Vishnu Computer Land (<12km), iStore (<12km), Rajasthali Handicraft Emporium (<13.. KS Ford (<12km), go2architect (<2km)

Hotels & Guest Houses

ITC Rajputana Jaipur (<14km), Hotel Kalyan (<13km), Hotel Clarks Amer (<4km), Country Inn & Suites By Carlson Jaip... Fortune Select Metropolitan Jaipur (<. Chokhi Dhani Group (<5km), Hotel Pearl Palace (<13km), Jaipur Marriott Hotel (<4km), Jaipur Palace (<8km), Ramada Hotel (<9km), Taj Jai Mahal Palace Hotel (<13km), Hotel Diggi Palace (<10km), Hari Mahal Palace (<13km), Taj Rambagh Palace (<10km), Hotel Ratnawali (<13km), The Fern (<4km), Hotel Palms (<13km), Naila Bagh Palace (<12km), Vesta Maurya Palace (<13km), The Oberoi Rajvilas Jaipur (<10km)

* All distances are approximate

Properties

Type	Area	Possession	Price *
2BHK Apartment / Flat	1100 SqFeet	-	₹ 37 lakhs
2BHK Apartment / Flat	1143 SqFeet	-	₹ 39 lakhs
3BHK Apartment / Flat	1391 SqFeet	-	₹ 41.59 lakhs
3BHK Apartment / Flat	1500 SqFeet	-	₹ 52.5 lakhs
4 Bedroom Independent House	2600 SqFeet	-	₹ 65 lakhs

* Data has been collected from publicly available sources and may not be up to date.

Properties available in 'Mahima Panorama'

3 Bedroom Flat for sale in Mahima Panorama, Jagatpura, Ja... 50 lakhs



1410 SqFeet Apartment @ Rs.3546/SqFeet

ID: P8192778 — Posted: Jan 1 by [Crossworld Properties.com](https://www.propertywala.com)

Ready to move 3BHK Apartment in Mahimas Panorama, Jaipur (Mahima Panorama)

3 bhk flat available for sale in mahima panorama, jagatpura. The 3 bhk flat is available on 8th floor and super build up area is 1594 sq feet. The 3 bhk flat is having east facing and semi furnished with modular kitchen, wooden work, color/paint etc. Panorama project launched by mahima ... [more details](#)

Mahima Panorama News

Expert Reviews on Mahima Panorama

Explore

[Projects in Jaipur](#)

[Brokers in Jaipur](#)

More Information

Report a problem with this listing

Is any information on this page outdated or incorrect?

[Report it!](#)

Disclaimer: All information is provided by builders, advertisers, or collected from publicly available sources and may not be verified as per RERA guidelines. Any information provided on this website, including facts and figures, should be verified independently before entering into any transaction. PropertyWala.com is only an advertising platform to help connect buyers and sellers and is not a party to any transaction, nor shall be responsible or liable to resolve any disputes between them.