

Residential Plot / Land for sale in Emaar MGF Mohali Hills, Sector 108, M... 1.31 crore



Residential Plot For Sale In Mohali

Emaar MGF Mohali Hills, Sector 108, Mohali - 140307 (C...

- Project/Society: [Emaar MGF Mohali Hills](#)
- Area: 500 SqYards ▾ ■ Facing: East
- Transaction: New Property ■ Price: 13,059,980
- Rate: 26,120 per SqYard -35%
- Possession: Immediate/Ready to move

Advertiser Details

**ALEXA** Real Estate  
**Alexan Real Estate**  
Owner/Proprietor

Sector 119, Mohali  
mob: 9888764155  
tel: 9569071155  
mail: [www.propertywala.com/alexan-real-estate](mailto:www.propertywala.com/alexan-real-estate)



Scan QR code to get the contact info on your mobile  
[View all properties by Alexan Real Estate](#)

Description

Emaar India Mohali Hills is located in Sector 108 as part of the Mohali Hills, a 650 acre township are fully integrated with all recreational and leisure amenities and offer the best in design and quality. Quality of life within this prestigious gated community is characterized by outstanding levels of comfort, convenience and security. Truly a place to call home. Uniquely configured around elegantly landscaped gardens and park lands.

Don't forget to mention that you saw this ad on PropertyWala.com, when you call.

Features

Land Features

- Clear Title ■ Freehold Land ■ Plot Boundary Wall
- Society Boundary Wall ■ Corner Plot
- Feng Shui / Vaastu Compliant
- Club / Community Center ■ Adjacent to Main Road
- Park/Green Belt Facing ■ Water Connection
- Electric Connection ■ Close to Hospital
- Close to School ■ Close to Shopping Center/Mall

Location

\* Location may be approximate

Landmarks

Restaurant & Shops

VS Grocers (<0.5km), Roots To Fruits (<1km), Joney Karyana Store (<2km), Chhabra Karyana Store (<3km), Maan Karyana Store (<3km), Ashwin Karyana & General Store (<3... General Store (<3km), Sharma Karyana Store (<3km), Puniaian General & Gift House (<3km), Bir Karyana Store (<3km), Deepak Karyana Store (<3km), One Hub (<4km), Karyana Store (<4km), Dudh Utpadakehkari Sabha (<4km), Connaught Place (<4km), Infashio9 (<4km), Everyday Store (<5km), Shiv Book Store & stationery (<6km), Indian Western Garments (<6km), Shenty General Store (<6km), Verma Departmental Store (<6km), Kunner Karyana Store (<6km), Saini Photostat (<6km), Nitish Department Store (<6km), Gmada (<6km), Divyanshi Foot Wear (<6km), A C Ahaata (<6km), Ravi Stationers & Communication (<6km), Suvinder General Store (<6km), Ambala Cloth House (<6km), Asli Babe di Chah (<6km), Happy Collection (<6km), Chhabra Provision Store (<6km), Seerat Boutique & Cloth House (<6k... Sukhi General Store (<6km)

Petrol Station

Reliance (<1km), Bharat Petroleum (<2km), Hindustan Petroleum (<4km), Indian Oil (<5km)

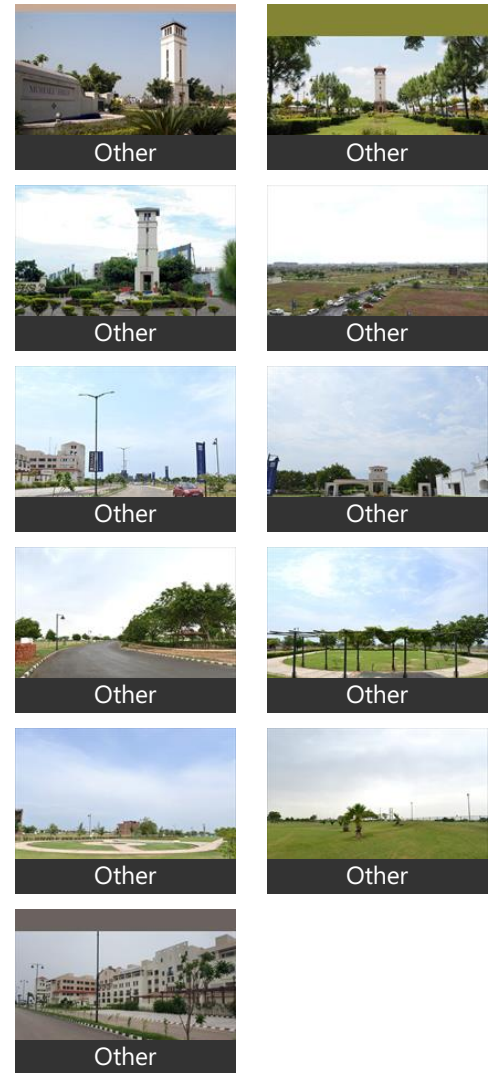
Shopping Centre

Central Plaza (<1km), Cantral Plaza (<1km), Metropark Mohali (<2km)

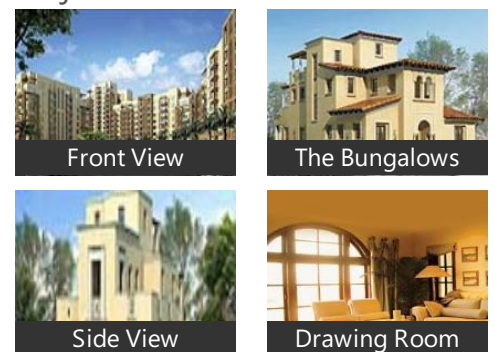
ATM/Bank/Exchange

State Bank of India (<2km), Hdfe Bank-Saneta (<2km), Punjab & Sind Bank (<2km), Axis Bank-Sas Nagar (<3km),

Pictures



Project Pictures

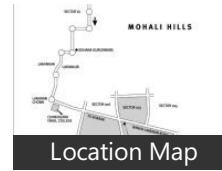


Bank of Baroda-Bhago Majra (<3km), Bank of Baroda (<3km), Hdfc Bank-Bhago Majra (<3km), HDFC Bank (<5km), Punjab National Bank (<5km), Capital Small Finance Bank (<6km), Axis Bank-Raipur Kalan (<6km), Indusind Bank (<6km), Punjab National Bank-Landran (<6km State Bank of India-Hni Mohali (<6km Uco Bank (<6km)

[more..](#)

\* These pictures are of the project and might not represent the property

## Project Floor Plans



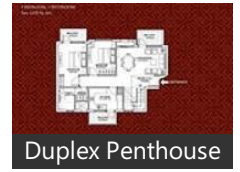
Location Map



2BR+2T Floor Plan



3BR+3T Floor Plan



Duplex Penthouse



3BR+2T Floor Plan



4BR+4T Floor Plan

\* These floor plans are of the project and might not represent the property

## Project Reviews

### Emaar MGF Mohali Hills

Own your home at world class place which is known as DUBAI of North India  
Lush green area  
200 acres dedicated green area  
Total 860 acres project  
World class security  
Dubai based developer

#### Pros:

- World class security
- Comfort living
- Lush Green Area

Posted: Sep 1, 2020 by [Sonu Singh \(Incredible Estate\)](#)

When Emaar Properties reaches for the sky, it really reaches for the sky. A global real estate group, Emaar Properties is perhaps best known for developing the world's tallest building. The tower known as Burj Khalifa opened in Dubai in 2010, reaches more than 2,700 ft., and includes 160 stories. Other Emaar projects include residential and commercial developments throughout the Middle East as well as in Europe, North Africa, North America, and Asia. Its residential properties range from one-bedroom apartments to seven-bedroom villas, primarily in the United Arab Emirates. Since it began operating in 1997, Emaar has built some 16,000 homes

#### Pros:

- ALOTS OF POSITIVE ASPECTS OF EMAAR MGF

#### Cons:

- NO NEGATIVE ASPECT OF EMAAR

Posted: Dec 13, 2019 by [Sumeet Singh \(Incredible Estate\)](#)

Emaar MGF is a big brand for the real estate sector and everyone wants or dreams to own a house under such a giant banner but the big price generates hesitation in the mind that pulls back. But here, the scenario is different, as Emaar MGF is a well known organization offering discounts in the name of festive bonanza. This can be the best opportunity for such individuals wanting premium housing at reasonable prices. Moreover, these luxurious and lucrative apartments available at lower prices also offer better payment options.

#### Pros:

- Luxury at low cost
- Situated at prime location
- eco-friendly surrounding for kids

#### Cons:

- Valuable but might be of high cost for service class

Posted: Oct 8, 2014 by Swati

Mohali Hills, by Emaar MGF located 20 minute drive from Sector 17 Chandigarh has direct connectivity to the transport services. Mohali Hills offers luxury villas, apartments, terraced town homes, leisure and several other options. It provides all the amenities and opulence of living in a luxury community. To fulfill the dream of owning a property of various individuals, Emaar MGF has announced a festive bonanza.

#### Pros:

- Payment option is very good`
- Less down payment
- Green and clean environment

Posted: Oct 8, 2014 by Manoj Sharma

Emaar MGF Mohali Hills is a beautiful project situated on Landra Banur Highway. It is a integrated township of 600 acres across 6 sectors of Greater Mohali. Company is having operational golf range of more than 20 acres long.

Emaar MGF is a joint venture between Emaar and MGF formed in February 2005

One of India's largest FDI in real estate, with operations spanning Residential, Commercial, Retail and hospitality businesses.

#### Pros:

- Very Good Location, direct connectivity to mohali
- Reasonable Price
- Integrated Township

#### Cons:

- Project is delayed too much
- Construction at a slow pace
- Limited Stock available for sale.

Posted: Aug 8, 2014 by [Ravi baghla \(Ici Consultants\)](#)

Emaar MGF Mohali Hills Residential Plots Mohali and Chandigarh, Mohali Hills Emaar MGF is one of India's leading real estate developers in the residential and commercial space. This is a joint venture between MGF Developments and Emaar Properties of Dubai. The major attributes are vast open spaces and large-scale industrial development; an already established population base and its easy connectivity to other cities.

#### Pros:

- Lowest price areas are available

Posted: Jul 3, 2014 by [Pawan kumar \(Dna Realtors\)](#)

Emaar Mgf Mohali Hills Mohali is rated 7 out of 10 based on 6 user reviews.

Disclaimer: The reviews are opinions of PropertyWala.com members, and not of PropertyWala.com.

Explore

[Similar Properties](#)

[Properties in Sector 108, Mohali](#)

[Projects in Mohali](#)

[Brokers in Mohali](#)

More Information

Report a problem with this listing

Is this property no longer available or has incorrect information?

[Report it!](#)

**Disclaimer:** All information is provided by advertisers and should be verified independently before entering into any transaction. You may visit the relevant RERA website of your state to verify the details of this property. PropertyWala.com is only an advertising platform to help connect buyers and sellers and is not a party to any transactions, nor shall be responsible or liable to resolve any disputes between them.