

Residential Plot / Land for sale in Tiruvallur, Chennai

2.73 lakhs



CMDA Approved Plots

Shri Vaari Garden, Ramanjeri, Tiruvallur, Chennai (Tamil N.

- Area: 540 SqFeet ▾
- Facing: North East
- Transaction: New Property ■ Price: 273,000
- Rate: 506 per SqFeet **-30%**
- Possession: Immediate/Ready to move

Advertiser Details

Shalini kms
Sales Professional

Ambattur, Chennai
mob: 8608061747
tel: 9092233166
mail:
www.propertywala.com/U233686410



Scan QR code to get the contact info on your mobile

Description

On New CMDA Limits DTCPApproved plots for sale in Ramanjeri- JUST 15 mts from Thiruvallur Railway Station and 5 mints from Thiruvallur Collectrate Office, Medical College, Law College, Jaya Group of Schools and Engineering College, Thirumurugan Arts College, Indira Medical College, Veeraraghavar Temple.

30 feet tar roads

Gated community

Portable drinking water

Teak wood trees Garden

street lights with 24x7 Surveillance camera

Premium plots

Just 1km Ramanjeri NH 205, Chennai to Tirupati Road

DTCP approved

Black Top Roads

10,000 Sq.Ft., Park

Ready for immediate construction with all basic facilities.

Plots Available from 532 sqft to 2235 sqft

We arrange for bank Loan up-to 90% .

Fully surrounded by residential homes and we also arrange for constructions with High qualified architecture plan with reasonable price

100 % best Investment.

Please mention that you saw this ad on PropertyWala.com when you call.

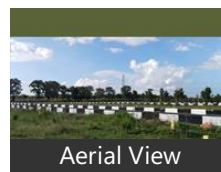
Features

Land Features

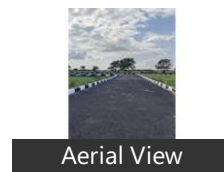
- Clear Title ■ Corner Plot
- Feng Shui / Vaastu Compliant ■ Water Connection
- Close to Hospital ■ Close to School

Location

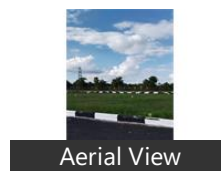
Pictures



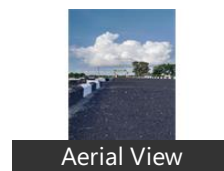
Aerial View



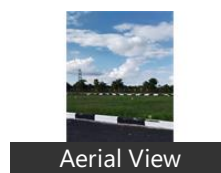
Aerial View



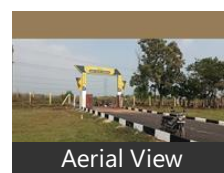
Aerial View



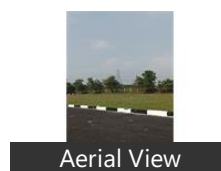
Aerial View



Aerial View



Aerial View



Aerial View

* Location is approximate

Locality Reviews

Tiruvallur, Chennai

It is a good city and facilities are there in the city and also train, bus, and school, college are there

Pros:

- *Good city*

Cons:

- *No negative aspects*

Posted: Feb 8, 2018 by [C. Murugaiyan \(Ammal Agency\)](#)

Well Developed very famous Town, Older than Chennai City. New highway is getting laid from Sriperambudur to Kattupalli port and ennor port, through Tiruvallur. mainly for Container transportation. Well connected to Industrial estates like Sriperambudur, Kakkalur and Ambattur.

Pros:

- *Older than Chennai city*
- *Town Panchayat*

Cons:

- *Still got lot of avenues of infrastructure growth*

Posted: Apr 25, 2017 by Venkatesh Kumar

Tiruvallur is having an ancient temple town which is located strategically. It has access both by rail & road. The famous Sri. Veeraraghava temple is sacrosanct. Lots of industries are mushrooming. It plays a pivotal point in Chennai economy & commerce. It is a fast growing educational hub as well.

Pros:

- *Excellent connectivity*
- *Away from hussle & bussle of city*
- *Cheap living*

Cons:

- *Water logging*
- *Distance to Chennai city*
- *Lack of drainage good roads infrastructure*

Posted: Dec 27, 2015 by Ramachandran Viswanathan

Tiruvallur, Chennai is rated 5 out of 10 based on 3 user reviews.

Disclaimer: The reviews are opinions of PropertyWala.com members, and not of PropertyWala.com.

Explore

[Similar Properties](#)

[Properties in Tiruvallur, Chennai](#)

[Projects in Chennai](#)

[Brokers in Chennai](#)

More Information

Report a problem with this listing

Is this property no longer available or has incorrect information?

[Report it!](#)

Disclaimer: All information is provided by advertisers and should be verified independently before entering into any transaction. You may visit the relevant RERA website of your state to verify the details of this property. PropertyWala.com is only an advertising platform to help connect buyers and sellers and is not a party to any transactions, nor shall be responsible or liable to resolve any disputes between them.