

SBP Elite Homes - Sector 115, Mohali



Sprawling luxury enclave of magnificent apartments

SBP Elite Homes is presented by SBP Group at Sector-115, Mohali offers residential project that host 3 BHK apartment with good features

- Project ID: J605118965
- Builder: SBP Group
- Location: SBP Elite Homes, Sector 115, Mohali - 140307 (Chandigarh)
- Completion Date: Dec, 2021
- Status: Started

Description

SBP Elite Homes by SBP Group Located at Sector-115, Mohali is the biggest feather in SBP's cap of achievements. A prodigious project spread across the area of 100 acres, accommodating 8000 flats. Developed in phases, the first phase initiated the construction of half of the area i.e. 4000 apartments spread across 50 acres comprising of 3 bhk apartments. The project is equipped with key amenities including rooftop swimming pool, amphitheatre, shuttle service etc & well connected with other parts of city and has all the basic utilities nearby.

RERA ID : PBRERA-SAS80-PM0069

Amenities :

- Amphitheater
- Smart Card Security System
- Shuttle service
- Guest Car Parking
- Lifts with ARD System
- 3 tier security
- 3 Highway Connectivity
- Special zone for Elder Persons
- Rooftop Swimming Pool
- Premium Well Equipped Gym
- Billiards
- Table Tennis Court
- Yoga & Meditation
- Gas Pipeline Connection

Welcome to SBP, your gateway to futuristic and luxurious homes that are the epitome of an ideal life. The No.1 Housing Company in Punjab, it has earned accolades for its high quality homes at pocket friendly prices. With SBP you get an opportunity to build your own home at a great location, in a setting full of deluxe amenities. SBP has been successful in delivering over 6500 homes to its customers.

Features

Luxury Features

- Power Back-up ■ Lifts

Recreation

- Swimming Pool ■ Park ■ Fitness Centre / GYM
- Club / Community Center

Land Features

- Club / Community Center ■ Water Connection
- Electric Connection ■ Close to Hospital
- Close to School ■ Close to Shopping Center/Mall

Exterior Features

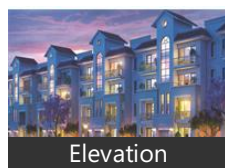
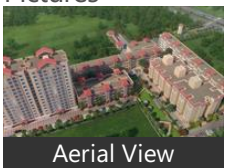
- Reserved Parking ■ Visitor Parking

Maintenance

- Rain Water Harvesting

Gallery

Pictures



Floor Plans



Floor Plan A

Location

Landmarks

Shopping Centre

North Country Mall (<5km), Krishna Market (<12km), Gulmmohar Complex (<4km), Phase 3a Mohali Market (<11km), Market Sector-70 Mohali (<9km), Sahibzada Ajit Singh Market (<9km), Market Phase 3b1 (<10km), Booth Market-Sec 68 (<10km)

Hotel

Dream Land Resorts (<1km), The Majestic (<12km), Hotel KLG International (<14km), Hotel the Zodiac (<9km), Hotel Chandigarh Beckons (<12km), Hotel Park Grand (<14km), Hotel Blue Diamond-Phase 9 Mohali... Sarao Hotel Phase-10, The FIRST HOTEL (<14km), Hotel Western Court (<14km), Imperial Hotel-Phase 1 (<9km), City Lodge (<10km), Oyo 19817 Hotel Star 79 (<0.5km)

Other features

Mohali (<13km)

Building

Orchard County (<1km), Gold Homes (<1km), Tdi City (<7km), Prabh Premium Apartments (<8km), Swaraj Enclave (<3km), Shivalik City (<3km), Acme Heights 1 (<3km), Jal Vayu Vihar Society (<12km), Mohali Hills-Sector 105 (<11km), Emaar MGF (<11km), Darshan Vihar (<11km)

Public Transport

Isbt-Sector 43 Bus Station (<12km), Antarraji Bus Station-Mohali (<11km), Sector 43 Local Bus Station (<12km)

ATM/Bank/Exchange

Axis Bank-Phase 7 Mohali (<11km), Indusind Bank (<9km), Andhra Bank (<5km), HDFC Bank (<7km), Punjab National Bank (<14km), Axis Bank (<9km), Punjab National Bank-Phase 1 (<10k... ICICI Bank Wealth Management (<10.. Jammu & Kashmir Bank-PH 2 Moha... State Bank of India (<11km)

Recreation

Park-Ind Area Phase 8 (<8km), Bassi Theatre (<10km), Silvi Park-Phase 10 Mohali (<13km), Simran Sports (<4km), Children Park-Sector 68 (<12km), PVR Gold-North Country Mall (<5km.. Archies Gallery (<10km), Thunder Zone (<6km), City Park (<12km), Park-Sector 67 (<12km), Park-Phase 6 Mohali (<8km), Park-Phase 4 (<9km), Park-Phase3b2 (<10km), Park-Sector 39d (<10km), Mig II Welfare Association Park-Secto. Park-Phase 7 (<11km)

Business & Services

Mahindra Swaraj Division-Mahindra... Punjab Pesticides Ind Co Soc (<7km), Swaraj (<3km), Quadrant Televentures (<6km), Techaid's Rollers & Waterjets (<7km), precicheck india (<7km), Panacea Biotec (<7km)

Restaurant & Shops

Kalyan Jewellers (<9km), Acc Ki Duniya (<4km), vodafone Store (<10km), Gobind Dairy & Sweets (<8km), Vishal Mega Mart (<9km), Reliance Mobile Store (<9km), Ashoka Textile (<10km), Indus Pharmacy (<10km), Tanishq (<10km), Woodland (<10km), TATA Docomo (<11km)

Hospitals & Clinics

Max Super Speciality Hospital (<9km), Fortis Hospital-ER (<11km), Diagnostic Center (<3km), Max Super Speciality Hospital-ER (<9.. Mehta Children Hospital (<4km), Chaitanya Hospital (<14km), Siddharth Diagnostic Centre (<10km), Ivy Hospital-ER (<8km), Civil Hospital (<9km), Indus Super Speciality Hospital (<10k.. Amar Hospital (<10km), Indus Hospital Mohali (<10km), Chawla Nursing Home & Hospital (<.. Mayo Healthcare (<10km), Bawa Dental Clinic (<10km), Grecian Cancer Heart Hospital (<11k... Cosmo Hospital (<11km), Child Care Clinic (<12km)

Petrol Station
Indian Oil (<12km)

* All distances are approximate

Properties

SBP Elite Homes News

- **Harpreet Brar's slow road to the top**
22 hours ago - The Punjab Kings spin-bowling allrounder was resigned to turning up for trials and bowling one over. Then his luck changed ... [more](#)
- **Political reasons of high inflation**
3 days ago - The price of wheat flour has surged by 30% during nearly 33 months of the PTI govt – from August 2018 to April 2021. [more](#)
- **Eid amidst Covid resurgence**
10 days ago - The second Eid under the long shadow of this pandemic, having hitherto claimed 32.5 million lives globally, is expected to be quiet and simple in Pakistan. The middle class lacks affordability. ... [more](#)
- **Former PBA player Karl Dehesa finds new career as a 3x3 player**
12 days ago - CALAMBA, Laguna - It was the first scrimmage of the Gilas Pilipinas 3x3 Men pool in Calamba, Laguna and Karl Dehesa came in with guns blazing. Dehesa and Leonard Santillan had joined the team of ... [more](#)
- **Mark Nonoy, Rhenz Abando on Baldwin's radar as Gilas pool expands**
7 days ago - MARK Nonoy and Rhenz Abando are among the collegiate stars under consideration for the Samahang Basketbol ng Pilipinas (SBP) as potential additions to the youthful Gilas Pilipinas pool. SBP program ... [more](#)

Expert Reviews on SBP Elite Homes

Explore

[Projects in Mohali](#)

[Brokers in Mohali](#)

More Information

Report a problem with this listing

Is any information on this page outdated or incorrect?

[Report it!](#)

Disclaimer: All information is provided by advertisers, including builders/agents/owners, or collected from publicly available sources and may not be verified under RERA. Any information provided on this website, including facts and figures, should be verified independently, including via the relevant RERA website, before entering into any transaction. PropertyWala.com is only an advertising platform to help connect buyers and sellers and is not a party to any transaction, nor shall be responsible or liable to resolve any disputes between them.

[Home](#) » [Mohali Real Estate](#) » [Projects in Mohali](#) » [SBP Elite Homes - Sector 115, Mohali](#)