

Mahima Panache - Jagatpura, Jaipur



You enjoy every facet of it

Mahima Panache by Mahima Group at the very prime location of Jagatpura in Jaipur offers residential project that host 3 bhk apartments and penthouse in various sizes.

- Project ID: J289651911
- Builder: Mahima Group
- Location: Mahima Panache, Jagatpura, Jaipur - 302033 (Rajasthan)
- Completion Date: Oct, 2016
- Status: Completed

Description

Mahima Panache by Mahima Group at the very prime location of Jagatpura in Jaipur offers residential project that host 3 bhk apartments and penthouse in the size ranges in between 1823 to 2423 sqft. The project comes with several amenities such as cafeteria, intercom, power backup, gymnasium, etc. The project is strategically located and is well connected with other parts of the city with all the basic utilities are nearby.

Amenities:

- Children's play area
- 24 X 7 Security
- Power Backup
- Gymnasium
- Swimming Pool
- Club House
- Intercom
- Jogging Track
- Landscaped Gardens
- Car Parking
- Rain Water Harvesting
- Multipurpose Room
- Indoor Games
- Lift Available
- Vaastu Compliant
- Visitor Parking
- Amphitheater
- 24 Hours Water Supply
- Gated Community
- CCTV
- Sewage Treatment Plant

Mahima Group was established in the year 1990 by Mr. Dharendra Madan. It is a leading real estate development company in Jaipur, which has transformed the urban landscape of the city by setting new standards in the housing and urban development sector. Ever since its inception, the company has delivered timeless quality in the commercial and residential constructions that have now turned into the landmarks of the city. With an emphasis on excellence and quality, the company strives to expand with a constant pace.

Features

Luxury Features

- Power Back-up ■ Lifts ■ High Speed Internet

Lot Features

- Balcony

Recreation

- Swimming Pool ■ Park ■ Fitness Centre / GYM

Security Features

- Security Guards ■ Intercom Facility

Exterior Features

- Reserved Parking

Maintenance

- Maintenance Staff ■ Rain Water Harvesting

Gallery

Pictures



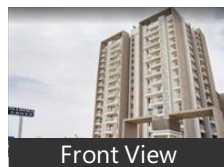
Elevation



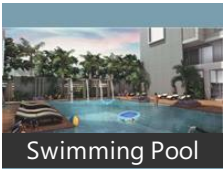
Aerial View



Main Entrance



Front View



Swimming Pool

Floor Plans



Master Plan



Floor Plan A



Floor Plan B



Floor Plan C



Location Map

Location

Landmarks

Restaurant & Shops

Chokhi Dhani (<8km), Entertainment Paradise (<6km), Nokia Service Centre (<10km), Luniyawas Medical (<11km), Big Bazaar (<9km), Reliance Fresh (<9km), Raj Books & Stationery (<4km), Saras Parlour (<5km), Tea Post (<11km)

Public Transport

Jaipur International Airport (JAI) (<4k.. Ramnagariya (<2km), Jagatpura Railway Station-Gate No. 1.. Durgapura Railway Station-Gate No 1.. Gandhi Nagar Railway Station (<9km.. Gandhi Nagar Railway Station-Gate N. India Gate (<5km), Goner Mod (<12km), VT Road (<11km), Vivek Vihar (<3km), Khatipura Railway Station (<9km), Gandhi Nagar Railway Station-Gate N. Gold Sukh (<5km), KV No 5 (<11km), Ridhi Sidhi (<11km)

Hotel

Hotel Jagrati Lords Inn Jaipur (<8km), Radisson Blu Hotel (<6km), Hotel Royal Orchid Jaipur (<7km), Red Fox Hotel Jaipur (<8km), The Theme Jaipur (<5km), RAMADA by Wyndham Jaipur (<12k.. Mango Ananta Express (<13km), Devika, CLARKS AMER-JAIPUR (<6km), FOUR POINTS BY SHERATON-Jaipur... Marriott-Jaipur (<6km), Shreemaya Restaurant (<7km), Hotel Rang Mahal (<6km), Hotel the Jaipur Classic-Mansarovar ... Pride Amber Villas Resort (<8km), Le Amour Inn (<8km), Hotel Jaipur Palace (<11km), India Pride-Lalkothi (<11km), Hotel Narain Niwas Palace (<13km), Rambagh Palace (<13km), Konark Palace Jaipur (<13km), The Hotel Hill View-Malviya Nagar (<.

Shopping Centre

World Trade Park South Block-Exit 8 ... Pink Square (<13km), Pink Squaremall-Gate No 3 (<13km), Add-on Bazaar (<7km), Central (<13km), MANSAROVAR PLAZA (<11km)

Building

Narayana Hrudayalaya Hospitals (<4... Genpact (<6km), Infosys Bpo (<6km), B. L. Tower (<8km), Pratap Enclave (<2km), Anad Vihar Railway Colony (<3km), The Park Central (<13km), Narayan Niwas (<11km), Fortis Escorts (<6km)

Hospitals & Clinics

Pratap Narayan Memorial Hospital-E... Mahatma Gandhi College (<8km), Fortis Escorts (<6km), Khandaka Hospital (<8km), Bhagwan Mahaveer Cancer Hospital... Apex Hospital-Gate No. 1 (<6km), Monilek Hospital and Research Cent... Ghiya Hospital (<5km), Mahatma Gandhi Hospital-ER (<8km.. Jaipur Hospital (<8km), Dr Talwar Medical Centre (<8km), Gopinath Hospital (<4km), Pratap Narayan Memorial Hospital (<. Babylon Children, Day Care Hospital (<5km), Ghiya Hospital-ER (<5km), Apex Hospital Medical (<6km)

Recreation

Haldighati Gate (<4km), Jaldhara (<9km), Jawahar Kala Kendra (<10km), Snow Planet (<7km)

ATM/Bank/Exchange

Axis Bank (<4km), United Bank Of India (<6km), State Bank of India ATM (<11km), Oriental Bank of Commerce (<3km), Punjab National Bank (<12km), Bank of Baroda (<5km), State Bank of India (<5km), UCO Bank (<11km), Union Bank of India-Kisan Bhawan L... Indian Overseas Bank (<6km)

Hostel

Youth Hostel (<13km), The Girls Hostel (<11km)

Landmark/Attraction

Birla Mandir Temple (<12km), Shri Shri Giridhari Dauji Temple (<12... Moti Dungri Ganesh Temple (<12km)

Parking Facility

5 by Oyo Metropolitan (<14km)

* All distances are approximate

Properties

Mahima Panache News

Expert Reviews on Mahima Panache

Explore

[Projects in Jaipur](#)

[Brokers in Jaipur](#)

More Information

Report a problem with this listing

Is any information on this page outdated or incorrect?

[Report it!](#)

Disclaimer: All information is provided by advertisers, including builders/agents/owners, or collected from publicly available sources and may not be verified under RERA. Any information provided on this website, including facts and figures, should be verified independently, including via the relevant RERA website, before entering into any transaction. PropertyWala.com is only an advertising platform to help connect buyers and sellers and is not a party to any transaction, nor shall be responsible or liable to resolve any disputes between them.

[Home](#) » [Jaipur Real Estate](#) » [Projects in Jaipur](#) » [Mahima Panache - Jagatpura, Jaipur](#)