

Industrial Building for rent in Pawane, Navi Mumbai

4 lakhs



Available Industrial Premises Rental Basic: At Pawane TTC MIDC

Pawane, Pawane, Navi Mumbai - 400703 (Maharashtra)

- Area: 8250 SqFeet ▾
- Floor: Ground
- Facing: East
- Lease Period: 1 Months
- Rate: 48 per SqFeet **-5%**
- Age Of Construction: Under Construction
- Available: Immediate/Ready to move
- Bathrooms: One
- Total Floors: Two
- Furnished: Unfurnished
- Monthly Rent: 400,000

Description

Description of Property

Location of the Premises: At Pawane TTC MIDC

Plot Area: 600 mtr

Covered Area: 8,250 sq ft

Expected Rent: 4,00,000/-

Facilities Available: 67 HP Power, Water Connection, Office space, Covered Terrace with Air-Conditioned office

Shed Height: 35 ft

When you contact us, please mention that you saw this ad on Property Wala .com

When you call, please mention that you saw this ad on PropertyWala.com.

Location

* Location may be approximate

Landmarks

Nearby Localities

[Vashi Sector 28](#), [Koper Khairane](#), [Mahape](#), [Turbhe](#), [Vashi Sector 19](#), [Kopar Khairane Sector-1](#)

* All distances are approximate

Explore

[Similar Properties](#)

[Properties in Pawane, Navi Mumbai](#)

[Projects in Navi Mumbai](#)

[Brokers in Navi Mumbai](#)

More Information

Advertiser Details

Scan QR code to get the contact info on your mobile

[View all properties by Unique Associates](#)

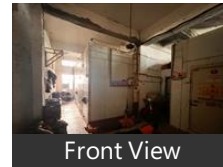
Pictures



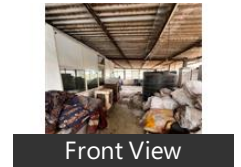
Front View



Front View



Front View



Front View



Front View



Front View

