

Gera's Emerald City - Baner, Pune



Building Your Dreams

Gera's Emerald City is spread over 5 acres. This Child Centric™ development consists of 4 towers - 2 towers of 2 bedroom apartments (towers D and G) and 2 towers of 3 bedroom apartments.

- Project ID : J408491191
- Builder: Gera Developments
- Properties: Apartments / Flats
- Location: Gera's Emerald City, Baner, Pune (Maharashtra)
- Completion Date: Sep, 2011
- Status: Started

Description

Gera Developments, creators of premium residential and commercial projects since 1950. Four decades of unwavering commitment to quality, innovation and finest customer service has earned us the trust and respect of our customers as well as the reputation of pioneers of real estate in Pune.

Gera Developments is one of the pioneers of the real estate business in Pune. Our commitment to quality since 1950 has earned us the trust of future customers, and most importantly the satisfaction of past customers. We are a full-service organization with in-house architects, engineers and construction crew. We also have an in-house interior design division that helps design homes as per customer tastes and preferences.

Gera's Emerald City is spread over 5 acres. This Child Centric™ development consists of 4 towers - 2 towers of 2 bedroom apartments (towers D and G) and 2 towers of 3 bedroom apartments (towers E and F). All 4 towers share a 45,000 sq.ft. podium and have ample basement parking and open car parking for all homes. The towers have been designed such that all homes are open from 3 sides optimizing sunlight, ventilation and privacy.

Location Advantages:

Gera's Emerald City is located in the upcoming suburb of Kharadi, Pune. Kharadi is the sixth fastest growing IT destination in India (source: NASSCOM). The suburb has two fully active SEZs, numerous large IT parks, 5 star Hotels (active and proposed), multiplexes, hypermarkets, big brand malls and shopping zones. Kharadi is conveniently

- 7 kms from Pune's International and domestic Airport
- 14 kms from Pune's Railway Station
- 6 kms from Kalyaninagar
- Kharadi is poised to become the next Kalyaninagar of Pune.

Specifications:

- Private entrance pathway to the main door to personalise entry
- Each living room has a segregated family space
- Each living room opens onto a terrace
- 24" x 24" vitrified tiles in living/dining areas
- Cornices in ceiling of living/dining room

Features

Luxury Features

- Lifts ■ RO System ■ Water Softner

Exterior Features

- Reserved Parking ■ Visitor Parking

Land Features

- Society Boundary Wall ■ Corner Plot
- Feng Shui / Vaastu Compliant
- Club / Community Center ■ Adjacent to Main Road
- Park/Green Belt Facing ■ Water Connection
- Electric Connection ■ Close to Hospital
- Close to School ■ Close to Shopping Center/Mall

Security Features

- Security Guards ■ Electronic Security
- Intercom Facility

Maintenance

- Maintenance Staff ■ Water Supply / Storage
- Boring / Tube-well ■ Rain Water Harvesting
- Waste Disposal

Other features

- Security / Fire Alarm ■ Lift(s) ■ Security Personnel
- Club house / Community Center
- Booking Amount: Rs. 120000
- Society Name: Gera Emerald City ■ Flooring: Ceramic
- Furnish: Unfurnished ■ Additional Rooms: Others
- Possession: Immediate ■ Ownership: Freehold
- Age of Property: Less than 5 Years
- Total Floors in Complex: 10
- Property on Floor: 5th Floor

Gallery

Pictures



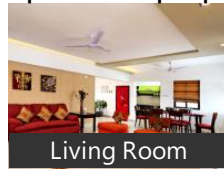
Drawing Room



Kitchen



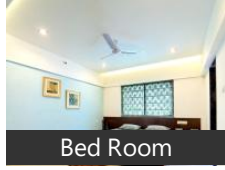
Bathroom



Living Room



Dining Room



Bed Room



Front View



Master Bed Room

Floor Plans



Floor Plan

Documents



Route Map Driving

Location

Landmarks

Transportation

Dapodi Railway Station (<9km), Khadaki Railway Station (<9km), Khadki Railway Station (<10km), Chikhawadi Railway Station (<10km), Kasarwadi Railway Station (<10km), Pimpri Metro Railway Station (<11km), Pimpri Railway Station (<11km), Bus-Stop (<3km), Bus Terminal (<3km), Bus Stand (<3km), Bus Stand Of Piple Nilakh (<4km), Bus Stop (<4km), Bus Depot (<5km), Mumbai Volvo Bus Stop (<5km), Jagtap Dairy Bus Stop (<5km), Wakad Bus Stop (<6km), New Sangvi Bus Stop (<6km)

Markets & Shopping Malls

Suyash Comercial Mall (<1km), Primrose The Mall (<2km), Bonsaii Kids Mall (<5km), Praposed Site 4r Nsg Mall Of Ganesh... Shopping Complex(Deepak Balwadk... Atria Shopping Complex (<3km), Balewadi Shopping And Office Comp. Pride People Coconut Commercial C.. Chidanand Society And Shopping Co.. Market Bazar (<4km), Deepa Market (<5km), Kunal Icon Shopping Complex (<6km).

* All distances are approximate

Properties

Type	Area	Possession	Price *
1BHK Apartment / Flat	588 SqFeet	-	₹ 39 lakhs
2BHK Apartment / Flat	1100 SqFeet	-	₹ 70 lakhs

2BHK Apartment / Flat	1150 SqFeet	-	₹ 85 lakhs
2BHK Apartment / Flat	1237 SqFeet	-	₹ 64 lakhs
2BHK Apartment / Flat	1250 SqFeet	-	₹ 68 lakhs
2BHK Apartment / Flat	1256 SqFeet	-	₹ 70 lakhs
3BHK Apartment / Flat	1182 SqFeet	-	₹ 99 lakhs
3BHK Apartment / Flat	1450 SqFeet	-	₹ 85 lakhs
3BHK Apartment / Flat	1588 SqFeet	-	₹ 82 lakhs
3BHK Apartment / Flat	1600 SqFeet	-	₹ 85 lakhs
3BHK Apartment / Flat	1620 SqFeet	-	₹ 1.25 crore
3BHK Apartment / Flat	1650 SqFeet	-	₹ 80 lakhs
3BHK Apartment / Flat	1665 SqFeet	-	₹ 81.5 lakhs
3BHK Apartment / Flat	1780 SqFeet	-	₹ 1.06 crore
3BHK Apartment / Flat	1800 SqFeet	-	₹ 1 crore
3BHK Apartment / Flat	1850 SqFeet	-	₹ 1.2 crore

* Data has been collected from publicly available sources and may not be up to date.

Gera's Emerald City News

Expert Reviews on Gera's Emerald City

Geras Emerald City has bigger size bed rooms than a normal 3 BHK flat. Very well ventilated & airy flats. Away from main road thus has peaceful environment. Children friendly design

Pros:

- Value for money.
- Easy access to Mumbai Highway, by-passing city traffic

Posted: Nov 16, 2014 by Hemant Kumar

Geras Emerald City Pune is rated 9 out of 10 based on 1 user reviews.

Disclaimer: The reviews are opinions of PropertyWala.com members, and not of PropertyWala.com.

Explore

[Projects in Pune](#)

[Brokers in Pune](#)

More Information

Report a problem with this listing

Is any information on this page outdated or incorrect?

[Report it!](#)

Disclaimer: All information is provided by builders, advertisers, or collected from publicly available sources and may not be verified as per RERA guidelines. Any information provided on this website, including facts and figures, should be verified independently before entering into any transaction. PropertyWala.com is only an advertising platform to help connect buyers and sellers and is not a party to any transaction, nor shall be responsible or liable to resolve any disputes between them.

[PropertyWala.com](#) » [Pune Real Estate](#) » [Projects in Pune](#) » [Gera's Emerald City - Baner, Pune](#)