

## 4 Bedroom Apartment / Flat for sale in Shanti Niketan, New Delhi

16.5 crores



★ Featured

### 4 BHK Builder Floor Residential Apartment For Sale On Third Floor At Shanti Niketan In South Delhi

Shanti Niketan, Adjoining Rao Tula Marg & Near To The...

- Area: 4000 SqFeet ▾
- Bathrooms: Four
- Total Floors: Four
- Furnished: Semi Furnished
- Transaction: Resale Property
- Price: 165,000,000
- Rate: 41,250 per SqFeet **-5%**
- Age Of Construction: 1 Years
- Possession: Immediate/Ready to move
- Bedrooms: Four
- Floor: Third
- Facing: North East

### Description

Resale Builder floor apartment with 5 star construction on third floor with terrace on very wide road , Having 4 spacious bedrooms with attached bath rooms , 1 powder room , Separate drawing/ dining room , Master bedroom with wooden flooring , Lobby , Store , Servant quarter , Fully equipped siemens modular kitchen with dish washer and washing machine , Separate gate for entry and car parking on stilt , Italian marble flooring , Entire terrace garden with the third floor only usable for party. Rich specifications , This builder floor apartment is made by top reputed builder of south delhi.

For more details about this apartment please contact. Brokers please excuse....

For more information regarding independent house/ bungalows, New builder floor apartments in other localities as given below then please contact :

Shanti nikanetan, Westend, Anand nikanetan, Vasant vihar, Golf links, Jorbagh, Chanakyapuri, Prithviraj road, Aurangzeb road, Connaught place, Sunder nagar, Panchsheel park, Hauzkhas enclave, Sda, Defence colony etc...

Please mention that you found this ad on PropertyWala.com when you call.

### Features

#### General

- Power Back-up
- Centrally Air Conditioned
- Room AC
- Lifts
- High Speed Internet
- Wi-Fi

#### Lot

- Private Terrace
- Balcony
- Private Garden
- Park Facing

#### Exterior

- Reserved Parking
- Visitor Parking
- Servant Quarter
- Park
- Club / Community Center

#### Maintenance

- Maintenance Staff
- Water Supply / Storage
- RO System
- Water Softner
- Boring / Tube-well
- Rain Water Harvesting
- Waste Disposal

### Location

#### Security

- Security Guards
- Electronic Security
- Intercom Facility
- Fire Alarm

#### Interior

- Woodwork
- Modular Kitchen
- Marble Flooring
- Granite Flooring
- Wooden Flooring
- Fly Proofing
- Feng Shui / Vaastu Compliant

#### Recreation

### Advertiser Details



**Sanjeet Sharma**  
Property Agent / Broker / Consultant  
Vasant Vihar, New Delhi

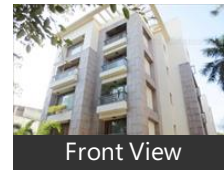
mob: 9810069114  
tel: 11-46541532  
mail:  
www.sharmaestates.in



Scan QR code to get the contact info on your mobile

[View all properties by Sharma Estates](#)

### Pictures



Front View

\* Location may be approximate

## Landmarks

### Education

Jawaharlal Nehru University (<5km), University of Delhi (<1km), Modern School (<11km), The Mother, Delhi Public School (<1km), American Embassy School (<4km), Tagore International School (<2km), The Frank Anthony Public School (<... Pusa Polytechnic (<9km), Manav Sthali School (<9km), Nehru Memorial Museum and Librar... Delhi Public School Vasant Kunj (<7k.. Balvantray Mehta Vidya Bhawan (<11.. R. D. Rajpal School (<14km), Sanskriti School (<2km), Army Public School (<4km), TERI University (<6km), St. George, Guru Harkrishan Public School (<3km. Presentation Convent Senior Second...

### Hotels & Guest Houses

DPS Vasant Kunj Hostel (<7km), The Lalit New Delhi (<11km), Hyatt Regency Delhi (<3km), Hotel White House (<11km), Hotel Ajanta Delhi (<12km), The Corus (<11km), The Metropolitan Hotel & Spa (<10k... Radisson Blu Marina Hotel Connaug... Hilton Garden Inn New Delhi/Saket H.. GINGER HOTEL in DELHI (RAIL YATR... The Imperial (<10km), EuroStar International (<7km), Hotel Florence (<11km), The Hans (<11km), Hotel Kingston Park (<11km), The Park Hotel (<10km), Hotel Shanti Palace (<6km), The Royal Plaza (<9km), Le Meridien New Delhi (<9km), Taj Palace Hotel (<3km)

### Recreation

The Garden of Five Senses (<11km), Lodi Garden (<7km), Jawaharlal Nehru Stadium (<9km), Gandhi Smriti (<7km), National Zoological Park (<11km), National Gallery Of Modern Art (<10... Pragati Maidan (<12km), Thyagaraj Sports Complex (<6km), Major Dhyan Chand National Stadium Shankar, Talkatora Stadium (<8km), Ambedkar Stadium (<14km), Triveni Kala Sangam (<12km), Nehru Memorial Museum and Librar... National Rail Museum (<2km), Indian War Memorial Museum (<16k.. Fun , PVR Naraina (<10km), DT Cinemas (<10km), WAVE CINEMAS (<13km)

### Hospitals & Healthcare

[more...](#)

## Locality Reviews

Shanti Niketan, New Delhi

SHANTI NIKETAN is an exclusive housing colony in the very heart of New Delhi. It was developed by the Government of India in the 1960s as a housing colony for government officials. Over the time, area has evolved as the most highly prized real estate in the capital, with the highest value.

#### Pros:

- *Very well located, green and peaceful.*
- *Basic amenities are all very nearby*
- *Forthcoming double metro rail 1 km away.*

#### Cons:

- *Low availability of plots*
- *Lack of clear titles with most plots*
- *Weak Society which seems to be in builder lobby grip.*

Posted: Jun 2, 2014 by [Raman Sharma \(Westend Property\)](#)

Shanti Niketan, New Delhi is rated 5 out of 10 based on 1 user reviews.

Disclaimer: The reviews are opinions of PropertyWala.com members, and not of PropertyWala.com.

### Explore

[Similar Properties](#)

[Properties in Shanti Niketan, New Delhi](#)

[Projects in New Delhi](#)

[Brokers in New Delhi](#)

### More Information

### Report a problem with this listing

Is this property no longer available or has incorrect information?

[Report it!](#)

**Disclaimer:** All information is provided by advertisers and should be verified independently before entering into any transaction. You may visit the relevant RERA website of your state to verify the details of this property. PropertyWala.com is only an advertising platform to help connect buyers and sellers and is not a party to any transactions, nor shall be responsible or liable to resolve any disputes between them.