

Harbinger lounge - Patrakar Colony, Jaipur



2BHK, 3BHK Residential Apartments and Penthouses in Patrakar Colony, Mansarovar, Jaipur.

Harbinger Group presents beautiful 2BHK, 3BHK and Penthouse in Harbinger lounge at Patrakar Colony, Mansarovar, Jaipur.

- Project ID : J666119003
- Builder: Harbinger Group
- Properties: Apartments / Flats
- Location: Harbinger lounge, Patrakar Colony, Jaipur - 302020 (Rajasthan)
- Completion Date: Dec, 2015
- Status: Started

Description

Harbinger Group is the well-known name in the field of real estate of India and this prestigious group has launched its brand new luxurious residential project named as **Harbinger lounge**. This beautiful residential project is offering luxurious **2BHK, 3BHK** residential apartments and Penthouses in various sizes ranges starting from **1360 Sq Ft to 1675 Sq Ft** in very reasonable price that can be easily affordable by most of the people. One great advantage with Harbinger lounge is its location which is easily accessible from almost each and every places of entire city and that location is Patrakar Colony, Mansarovar, Jaipur. Harbinger lounge is one of the very special project of its builder and located in the heart of Jaipur, around the whole project you will find lush greenery as well as pollution less, peaceful environment, not only this it has very close proximity to many famous markets, shopping malls, hospital, educational institutions, etc. Harbinger lounge contains 31 units of well designed and developed residential apartments and it has ground plus 9 floors.

Location - Patrakar Colony, Mansarovar, Jaipur

Type - 2BHK, 3BHK Residential Apartments and Penthouses

Size - 1360 Sq Ft to 1675 Sq Ft

Price - On Request

No of Units - 31 Nos.

No of Tower - 1

Floors - Stilt+9 Floors

Features

- Modern elevators
- Fitness Club
- Gaming Zone
- External Alum Doors and Windows
- DTH connection provision in all apartments
- Fire Fighting System
- Club Hall
- Roof Terrace Party Garden
- Modular switches with adequate points for lighting and appliances
- Provision for Centralized LPG system
- Water Harvesting System
- Power backup for common light load and elevators
- Centralized guard room manned by well-trained security personnel
- 7 ft high dado in bathrooms
- Vitrified Tile Flooring in Living, dining and bedrooms
- Access control system and CCTV Surveillance
- Ceramic tiles in bathrooms and balconies
- wooden Internal doors
- Full Power Backup on average Load.
- Walls with P.O.P base and paint
- Granite kitchen counter with stainless steel sink
- 2 ft high glazed tile above kitchen platform
- Standard CP fitting
- AC points in all rooms
- Broadband environment in every home

The **Harbinger Group** was established in the year of 1998, with varied & growing interests in Real Estate, Construction as well as IT industry. The Real Estate business is currently being moved under its holding company Harbinger Creators and Developers (HCD) Pvt Ltd. Since its beginning, Harbinger Group has a prosperous track record of finishing projects on time. The organization considers believes in building never-ending relationships with clients by sharing professional as well as ethical values. The group's belief lies in the best quality not quantity. The whole group is extremely careful when it selects location of its projects. This prestigious group always avoids locations near unplanned urban locality, near open drainage or nallah, as well as near high tension lines. This group always chooses locations with at least two side roads.

Features

Luxury Features

- Power Back-up ■ Centrally Air Conditioned
- Room AC ■ Lifts ■ RO System ■ Water Softner
- High Speed Internet ■ Wi-Fi

Security Features

- Security Guards ■ Electronic Security
- Intercom Facility ■ Fire Alarm

Lot Features

- Private Terrace ■ Balcony ■ Private Garden
- Corner Location ■ Park Facing

Lot

- Basement

Interior Features

- Woodwork ■ Modular Kitchen
- Feng Shui / Vaastu Compliant

Interior

- Marble Flooring ■ Granite Flooring
- Wooden Flooring ■ Fly Proofing

Exterior Features

- Reserved Parking ■ Visitor Parking
- Independent Garage ■ Servant Quarter

Recreation

- Swimming Pool ■ Park ■ Fitness Centre / GYM
- Club / Community Center

Maintenance

- Maintenance Staff ■ Water Supply / Storage
- Boring / Tube-well ■ Rain Water Harvesting
- Waste Disposal ■ RO System ■ Water Softner

Commercial Features

- Cafeteria / Food Court ■ Conference room ■ ATM
- Service / Goods Lift ■ High Speed Internet / Wi-Fi

General

- Power Back-up ■ Lifts ■ High Speed Internet
- Wi-Fi

Gallery

Pictures



Night Time View



Bird Eyes View



Elevation



Night Time Balcony



Front View



Balcony

Floor Plans



Location Map



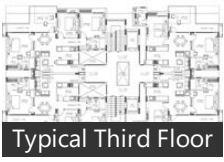
Ground Floor Plan



Typical First Floor



Typical Second



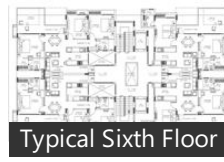
Typical Third Floor



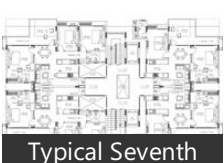
Typical Fourth Floor



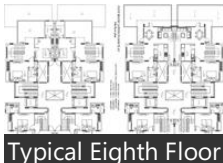
Typical Fifth Floor



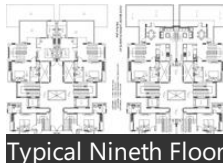
Typical Sixth Floor



Typical Seventh



Typical Eighth Floor



Typical Nineth Floor



2BHK 1360 sq Ft



3BHK 1676 Sq Ft



Penthouse 1



Penthouse 2

Documents



Price List

Location

Landmarks

Transportation

Jaipur International Airport (<8km), Ajmeri Gate Taxi Stand (<14km), Sindhi Camp Bus Depot (<13km), Railway Station Jaipur Junction (<12km.. Metro Cabs Pvt. Ltd (<10km), Sindhi Camp Bus Station (<14km), Panchwala (<12km), Taxi & Cab Services Jaipur (<9km), Kanakpura Railway Station (<15km), RSRTC Bus Station (<11km), Rajasthan Car Tours (<10km), Durgapura Railway Station (<4km), Taxi Stand (<7km), Sanganer Railway Station (<5km), Kamla Nehru Nagar Mode Bus Stop (. Auto Taxi Stand (<7km), Jagatpura Taxi Stand (<11km), Jln Marg Bus Stop (<12km), City Bus Stand (<6km), Mansarover Metro Station (<5km)

Banks & ATMs

State Bank of Bikaner & Jaipur (<9km.. Citi Bank (<15km), Syndicate Bank (<14km), BOI (<7km), Union Bank Regional Office (<8km), HDFC Bank (<14km), IDBI Bank Ltd. (<10km), Corporation Bank (<15km), SBI ATM (<5km), Union Bank Of India (<10km), Axis Bank (<12km), Destimoney Enterprises Pvt.Ltd. (<12... IDBI (<15km), Home Loan Interest Rates Jaipur (<14.. Dena Bank (<8km), Oriental Bank Of Commerce (<10km), Gold Loan Jaipur (<13km), Oriental Bank of Commerce (<13km), State Bank of India (<3km), Bank of Baroda ATM (<13km)

Education

Subodh Public School (<11km), St Soldier Public School (<12km), Neerja Modi School. (<4km), Maheshwari Public School (<13km), Rajasthan University (<11km), Ryan International School (<3km), Step By Step School (<9km), Sanskaar School (<12km), St. Wilfred College (<1km), SMS Medical College (<13km), Tagore NRI International School (<3k.. Global Technical Campus (<14km), Step By Step International School (<1.. Jaipur Engineering College and Resea.. Lal Bahadur Shastri College (<12km), Poddar International College (<3km), Hindustan International Academy (<... Delhi Public School (<11km), Bharatiya Vidya Bhavan Vidyashram ... Maharani Gayatri Devi Girls School (<..

Shopping

World Trade Park (<7km), Anokhi Cafe (<12km), Jaipur Rugs Company Pvt. Ltd. (<4km. The Gem Palace (<14km), Nibs cafe & chocolataria (<9km), Rana Sarees (<13km), Metropolitan (<10km), Soma Shop (<11km), Amrapali Jewels (<13km), Tapri~ The tea house (<10km), Bake Hut (<13km), Kripal Kumbh (<14km), Crystal Palm (<10km), Royal Enfield (<10km), Vishnu Computer Land (<9km), iStore (<10km), Rajasthali Handicraft Emporium (<14.. KS Ford (<8km), go2architect (<10km), G. S. Marbles (<14km)

Offices

Business Post Centre (<13km), Raj Aangan (<13km), Rajasthan High Court (<11km), Muhana Mandi Police Station (<7km... India Post office (<11km), Vaishali Nagar Post Office (<10km), post office (<12km), Police Thana Railway Station Road (<.. Sanganer Thana (<7km), Police Stations Sindhi Camp (<13km), Sindhi Camp Police Station (<14km), Vaishali Nagar Community Center (<.. Narain Motor Agency Private Limited.. Gandhi Nagar Post Office (<7km), Dubai Visa Company (<7km), Post Office (<15km), Durgapura Post Office (<5km), Arya Samaj (<13km), Model Town Post Office (<10km)

Hospitals & Healthcare

Fortis Hospital (<7km), Santokba Durlabhji Memorial Hospit... Zivaya Spa (<11km), Cambay Golf Resort Jamdoli (<15km), Apex Hospital Pvt. Ltd. (<10km), SHARDA DENTAL HOSPITAL & AEST... Jaipur Hospital (<10km), Tagore Hospital & Research Institute... Monilek Hospital (<13km), SMS Hospital (<12km), NK DENTAL HOSPITAL (<9km), Pride Amber Vilas Resort (<16km), Jain ENT Hospital (<9km), Anand Hospital & Eye Centre (<11km). Jain Eye Hospital & Laser Centre (<13.. Sahai Hospital (<12km), Walia Dental Clinic (<13km), PITAMBRA TOURS & TRAVELS® (<5... Rungta Hospital (<8km), Heart And General Hospital (<12km)

Hotels & Guest Houses

ESCORTS ESCORT (<8km), Umaid Bhawan Hotel (<14km), ITC Rajputana Jaipur (<12km), Shahpura House (<13km), Hotel Kalyan (<12km), Hotel Clarks Amer (<6km), Country Inn & Suites By Carlson Jaip... ESCORTS SERVICE ESCORT SERVICES... Hotel Arya Niwas (<13km), Fortune Select Metropolitan Jaipur (<.. Chokhi Dhani Resort (<8km), Royal Orchid Central (<13km), Royal Heritage Haveli (<12km), Jaipur Marriott Hotel (<6km), Jaipur Palace (<8km), Ramada Hotel (<13km), Krishna Palace (<13km), Taj Jai Mahal Palace Hotel (<11km), Pink Pearl Hotel & Fun City (<12km), Hotel Diggri Palace (<11km)

Restaurants & Clubs

Hotel Kalyan (<12km), The Fern (<5km), Anokhi Cafe (<12km), Jawahar Kala Kendra (<9km), Niros Restaurant (<13km), Hotel Laxmi Niwas (<7km), Hotel Shalimar (<13km), Hotel Pratap (<14km), LMB Hotel (<15km), Sethias Danapani Restaurant (<7km), Divine Boutique Hotel (<13km), Surya Mahal (<13km), Hotel Classic Holidays (<8km), The Lalit Jaipur (<7km), Atithi Guest House (<13km), chitrakatha-a boutique hotel in jaipu... Copper Chimney Restaurant (<11km), Hotel Safari (<5km), Nibs cafe & chocolataria (<9km), V2 Fine Dining Restaurant (<12km)

Religious Places

Birla Mandir (<11km), BAPS Shri Swaminarayan Mandir (<9... Laxmi Narayan Temple (<17km), Govind Dev Ji Temple (<7km), ISKCON (<3km), Raja park Gurudwara (<13km), Ayappa Mandir (<5km), Digamber Jain Temple (<15km), Shwetambar Jain Dadabari (<5km), Hanuman Temple (<11km), Digambar Jain Temple (<5km), Shree Digamber Jain Atishya Shetra M. JAIN TEMPLE (<4km), Brihaspati Dham (<3km), Hida Ki Mori Gurudwara (<16km), Bhishtiyon Ki Choti Masjid (<16km), St. Andrew, Shani Mandir (<9km), Hans Vihar Mandir (<3km), Masjid Takiya Yaqeen Shah (<16km)

Recreation

Hawa Mahal (<16km), Sawai Mansingh Stadium (<10km), Jaipur Zoo (<14km), M. P. Birla Planetarium (<12km), Albert Hall Museum (<13km), Entertainment Paradise (<6km), Central Park (<11km), BIG Cinemas Galaxy (<4km), Inox Vaibhav Vaishali Nagar (<11km), Kanchan Kesari Village Resort (<12km), Jawhar Circle (<6km), Nidhi Art Gallery (<13km), Cinepolis India Pvt Ltd (<7km), Statue Circle (<12km), Shankars Art Gallery (<16km), Rajasthan Images (<9km), Club First (<19km), Tilak Park (<12km), Shrinath Art Gallery (<15km), INOX Cinema Hall (<10km)

* All distances are approximate

Properties

Type	Area	Possession	Price *
2BHK Apartment / Flat	1360 SqFeet	-	₹ 49.58 lakhs
3BHK Apartment / Flat	1675 SqFeet	-	₹ 60.46 lakhs
3BHK Apartment / Flat	2182 SqFeet	-	₹ 85 lakhs
3BHK Apartment / Flat	2589 SqFeet	-	₹ 96 lakhs
4BHK Apartment / Flat	2428 SqFeet	-	₹ 88 lakhs

* Data has been collected from publicly available sources and may not be up to date.

Harbinger lounge News

Expert Reviews on Harbinger lounge

Explore

[Projects in Jaipur](#)

[Brokers in Jaipur](#)

More Information

Report a problem with this listing

Is any information on this page outdated or incorrect?

[Report it!](#)

Disclaimer: All information is provided by builders, advertisers, or collected from publicly available sources and may not be verified as per RERA guidelines. Any information provided on this website, including facts and figures, should be verified independently before entering into any transaction. PropertyWala.com is only an advertising platform to help connect buyers and sellers and is not a party to any transaction, nor shall be responsible or liable to resolve any disputes between them.

[PropertyWala.com](#) » [Jaipur Real Estate](#) » [Projects in Jaipur](#) » [Harbinger lounge - Patrakar Colony, Jaipur](#)