

3 Bedroom Apartment / Flat for rent in Pashmina Waterfront, Krishnaraja... 70,000



Pashmina Water Front

Battarahalli, Krishnaraja Puram(K R Puram), Bangalore - ...

- Project/Society: [Pashmina Waterfront](#)
- Area: 1918 SqFeet ▾
- Bedrooms: Three
- Bathrooms: Three
- Floor: Nineteenth
- Total Floors: More than 20
- Facing: North
- Furnished: Furnished
- Monthly Rent: 70,000
- Rate: 36 per SqFeet **+70%**
- Age Of Construction: 7 Years
- Available: Immediate/Ready to move

Advertiser Details

Gagana Sai

Banashankari, Bangalore

mob: 9121044725

tel:

mail:

www.propertywala.com/U86259909



Scan QR code to get the contact info on your mobile

Description

This Flat can be a comfortable and affordable home for your family. It is a 3 BHK unit available on rent at Battarahalli in Bengaluru. This Flat comes with a plethora of amenities to meet your modern lifestyle needs. It is Semi Furnished. Offering beautiful city views, this 3 BHK has been thoughtfully developed. It includes a total of 3 bedrooms and 3 bathroom. It also includes 0 balcony that can be a perfect place for relaxation.

When you call, don't forget to mention that you found this ad on PropertyWala.com.

Features

General

- Power Back-up
- Lifts

Lot

- Balcony

Exterior

- Reserved Parking
- Visitor Parking

Maintenance

- Maintenance Staff
- Waste Disposal

Location

* Location may be approximate

Landmarks

ATM/Bank/Exchange

Union Bank of India (<0.5km), Hdfc Bank (<0.5km), Axis Bank (<0.5km), Icici Bank (<0.5km), Canara Bank (<0.5km), State Bank of India (<0.5km), SBI BANK-AAKASH NAGAR (<0.5km), Goutham Bankers Pawn Broker (<0.5... DBS (<1km), Federal Bank (<1km), Federal Bank-Bangalore-K R Puram (... Federal Bank-Udaynagar (<1km), Bank of Baroda (<1km)

Public Transport

Krishnarajapuram Railway Station-En.. Krishnarajapuram Railway Station(No.. Tinfactory Bus Stop (<1km)

Restaurant & Shops

Shri Sakthi Bar & Restaurant (<0.5km... Keerthi Bar & Restaurant (<1km), Kiran Bar & Restaurant (<1km), Sunil (<1km), Meena Stores (<1km), Srinivasa Bar & Restaurant (<1km), S&S Fashion Wears (<1km), Shri Venkateshwara Darshini (<1km), Shri Balaji Provision Store (<1km), Memory Boutique (<1km),

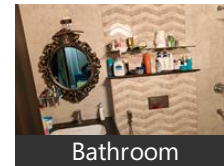
Pictures



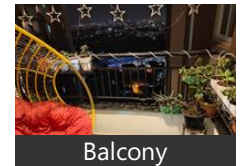
Main Entrance



Living Room



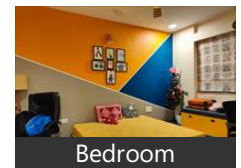
Bathroom



Balcony



Kitchen



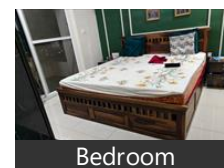
Bedroom



Dinning Room



Living Room



Bedroom



Study Room



Swimming Pool



Elevation

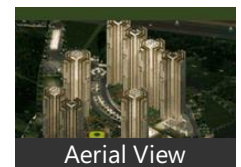


Route Map

Project Pictures



Main Entrance



Aerial View

Shri Nanjundeshwara Provision Store.. Om Creations (<1km), Anu Provision Store (<1km), Jothishwar Textile and Readymade (<.. Jaya Provision Store (<1km), Roshan Foot Wear (<1km), Nandini Provision Store (<1km), S Padmasri Tex (<1km), Padmashri Hi Fashion (<1km), Shri Ganesh General Store (<1km), Legal Price Store (<1km), Shri Lakshmi Venkateshwara Traders... SLV Traders (<1km), Ramdev Provision Store (<1km), T R S Retail (<1km), RMJ Departmental Store (<1km), Shri Sai Ram Traders (<1km), S. P Store-Kagdsapura (<1km), Shri Raghavendra Provision Store (<1.. Priya Fashions (<1km)

Hotel

Nisarga Inn (<0.5km), Shaaron Hotel (<1km), Grand Hotel-Dooravani Nagar (<1km.. Oyo 385 Townhouse Navya Internati...

[more...](#)

Locality Reviews

Krishnaraja Puram(K R Puram), Bangalore

Krishna Raja Puram or K R Puram is one of the main market areas in the city. It is located 15 kilometers from Bangalore City Railway Station on Old Madras Road (NH-4). It is very close to IT corridor of Whitefield Road and Maratahalli. It is surrounded by Dooravani Nagar, Kuvempu Nagar, B Narayanapura, A Narayanapura and Pai Layout. The Cambridge Institute of Technology, as well as the Indian Telephone Industry with its residential area is situated in this area.

It is one of the fast-growing localities of Bangalore as ITPL is just 4kms away. It is a residential locality with facilities like hospital, college, school, bus stop, market all within 2 km radius. It is 5 to 6 km from the metro and railway station. The area has a mix of all communities like the North Indians, Keralites, Tamilians and Reddys. It has close proximity to the IT corridor. It is famous for India first cable stayed bridge. KR Puram is also a major railway junction. The Yellammappa Shetty Lake, situated just outside the eastern limits of KR Puram, is the largest lake in Bangalore.

The area predominantly has residential layouts that are made up of independent houses as opposed to large apartment complexes by big builders seen in other developing areas in the city. The advantage of staying here is the close proximity to the railway station, which is soon growing into a hub and a relatively near proximity to the international airport and the city center

Pros:

- KR Puram is a very nice location
- It connects to every end of the city and less traffic
- It is close to Railway Station and is also with Devanahalli International Airport.

Cons:

- Traffic problem near railway station

Posted: Oct 4, 2015 by [Aim 2 Properties \(Aim 2 Reach\)](#)

Krishnaraja Puram(K R Puram) has a close proximity to the IT hub of Whitefield, good connectivity to the airport and other locations in the east, availability of land parcels at relatively low rates and a rise in housing options in this belt is turning this into one of the fastest-developing corridors in Bangalore. Easy access to the international airport and the IT hub of Whitefield, good connectivity through the upgraded Old Madras Road and a variety of housing options have led to fast development of this Belt.

Pros:

- Upcoming Hub for Residential Area
- Automobile Hub (In Hoskote/narsapura) close to KR Puram

Cons:

- Heavy Traffic Area

Posted: Mar 30, 2015 by Arvind Venkatraman

KR Puram is one of the decent residential place in Bangalore. One can get all the facility there for comfortable stay, includes shopping malls, super market, schools, park, lake, hospitals, good connectivity to Bangalore city center. The cost of living is comparatively cheap including house rents.

Pros:

- Cool and calm residential area
- Safe place for people from other states and country
- easy access to recreations- Park, lake, shopping etc

Posted: Nov 25, 2014 by Devaraj HC

Connectivity :

9 min drive From KR Puram, Ramamurthy Nagar, 15 Km distance from ITPL, White Field and Manyata Tech Park.

Pros:

- Pashmina Brookwoods, Prestige Glenn Woods, Brigade Exotica are near.
- Some institutions are close to this locality like Garden City College
- New Baldwin International school is near, Proposed Delhi Public School,

Cons:

- Garden City College
- - New Baldwin International School
- - Proposed Delhi Public School

Posted: May 21, 2014 by [Veer Swamy \(L 7 Developers\)](#)

- 2 Km from Koshys hospital.
- 4 Km from KR Puram railway station.
- 8 Km from ITPL.
- 12 Km from MG Road.
- 16 Km from Hebbal.
- 16 Km from Maratahalli.
- BP Petrol bunk and Reliance Fresh and other grocery and vegetable shops available in 500m .
- 1km from St. Antony's church.
- Schools within 2 km.

Pros:

- 12 Km from MG Road
- 16 Km from Hebbal



Elevation

* These pictures are of the project and might not represent the property

Project Floor Plans



Site Plan



Location Map



Floor Plan

* These floor plans are of the project and might not represent the property

Krishnaraja Puram(K R Puram), Bangalore is rated 7 out of 10 based on 5 user reviews.

Disclaimer: The reviews are opinions of PropertyWala.com members, and not of PropertyWala.com.

Explore

[Similar Properties](#)

[Properties in Krishnaraja Puram\(K R Puram\), Bangalore](#)

[Projects in Bangalore](#)

[Brokers in Bangalore](#)

More Information

Report a problem with this listing

Is this property no longer available or has incorrect information?

[Report it!](#)

Disclaimer: All information is provided by advertisers and should be verified independently before entering into any transaction. You may visit the relevant RERA website of your state to verify the details of this property. PropertyWala.com is only an advertising platform to help connect buyers and sellers and is not a party to any transactions, nor shall be responsible or liable to resolve any disputes between them.