

Lodha Vikhroli - Vikhroli West, Mumbai



benchmark of green feel natural surroundings

Lodha Vikhroli is located in the heart of Vikhroli West, Mumbai offers 3 BHK apartments with various facilities.

- Project ID: J324429119
- Builder: Lodha Group
- Location: Lodha Vikhroli, Vikhroli West, Mumbai - 400079 (Maharashtra)
- Completion Date: Dec, 2027
- Status: Started

Description

Lodha Vikhroli is located in the heart of Vikhroli West, Mumbai offers 3 BHK apartments with different sizes ranging from 1025-1175 sqft. The project is spread over an area of 0.52 acres of land. consisting of 1 building with 223 units and a Large deck in the living room that opens to encompassing green views. This project is spread over 30,000 sq. ft. of world-class landscape with 15000 sqft. clubhouse.

RERA ID: P51800046322

Amenities

- Sub-Station
- Receiving Station
- Footpaths/Pedestrian
- Closed Car Parking
- 24X7 Water Supply
- Fire Fighting System
- Fire Sprinklers
- Internal Roads
- Sewage Treatment Plant
- Aggregate area of recreational Open Space
- Community Buildings
- Meter Room
- Energy management
- Landscape Garden and Tree Planting
- Open Parking
- Solid Waste Management And Disposal
- Storm Water Drains
- Street Lighting
- Water Conservation, Rain water Harvesting
- Gymnasium
- Swimming Pool
- Children's play area
- Club House
- Lift(s)
- Cycling & Jogging Track
- Food Court
- Garbage Disposal
- Multipurpose Hall
- Car Parking
- Jogging Track
- Indoor Games
- Multipurpose Room
- Banquet Hall
- Cafeteria
- 24 X 7 Security
- Library

Lodha Group Founded in 1980, The company is a premier real estate developer of Mumbai. Mangal Prabhat Lodha is the chairman and founder. Presently The Group is currently developing an estimated 43 million sqft of prime real estate with the largest land reserves in MMR and around 30 projects that are located around Mumbai. The company is one of the most profitable players in India and the largest by sales for three consecutive years.

Features

Luxury Features

- Power Back-up
- Centrally Air Conditioned
- Room AC
- Lifts
- RO System
- Water Softner
- Wi-Fi

Security Features

- Security Guards
- Electronic Security
- Intercom Facility

Lot Features

Interior Features

- Balcony ■ Park Facing

- Woodwork ■ Modular Kitchen
- Feng Shui / Vaastu Compliant

Exterior Features

- Reserved Parking ■ Visitor Parking

Recreation

- Swimming Pool ■ Park ■ Fitness Centre / GYM
- Club / Community Center

Maintenance

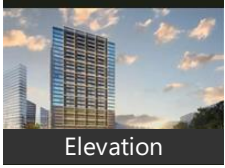
- Maintenance Staff ■ Water Supply / Storage
- Rain Water Harvesting ■ Waste Disposal

Commercial Features

- ATM

Gallery

Pictures



Elevation



Bedroom



Living Room



Elevation

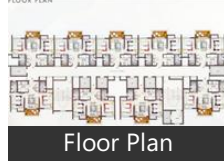
Floor Plans



Master Plan



Location Map



Floor Plan

Location

Landmarks

Public Transport

Asha Usha Company (<0.5km), Godrej Company (<0.5km), Vikhroli Station Road W (<1km), Vikhroli Station Road (W) (<1km), Vikhroli Station Road West (<1km), Vikhroli Railway Station (<1km), Mahapalika Udyan (<1km), Vikroli Aagar (<1km), Varsha Nagar (<1km), Vikhroli East Bus Station (<1km), Vikhroli Depot (<1km), Guru Nanak School (<1km)

ATM/Bank/Exchange

Union Bank of India (<0.5km), Icici Bank (<0.5km), Axis Bank (<1km), Kotak Mahindra Bank (<1km), The Chamber Nagarik Sahakari Bank... Saraswat Bank (<1km), HDFC Bank (<1km), DCB Bank (<1km), State Bank of India (<1km), Citibank (<1km), Yes Bank (<1km), Bank of India-Vikhroli West (<1km), Yes Bank-Vikhroli (<1km), Abhyudaya Co-op Bank (<1km), Abhyudaya Co-Operative Bank (<1km) Co-Operative Bank (<1km), Bank of Maharashtra (<1km)

Restaurant & Shops

Mahajan Premium Suitings (<0.5km), Entwine (<0.5km), Deepak Store (<1km), Guest House (<1km), Shri Krishna (<1km), Shri Siddhivinayak Store (<1km), Shashi Punjab Dining Bar (<1km), Chamunda Grain & General Stores (<1km), Godrej & Boys Employees Co op Com Jai Mallhar Footwear (<1km), Haute Fashion (<1km), Rice Plate (<1km), Prince Men, Pavaskar Trailer (<1km), Jockey (<1km), Cambridge (<1km), V R Boutique (<1km), Aasaan-Vijay Grain Stores (<1km), Food Bite (<1km), Aassan Store (<1km), Titan (<1km), Shri Sai and Sode (<1km), Shri Krishna Stores (<1km), Bhairavnath Tea House (<1km), Gujarat Cloth Store (<1km), Hotel Satkar (<1km), Prince Designer (<1km), Ramji Govindji Kirana Stores (<1km), Laxmi Society Stores (<1km), Sagar Redimaid Kapdye Ki Dukan (<1km), Devikrupa General Stores (<1km), Hotel Kashish Resto Bar (<1km), Shah Nensi Kanji (<1km), Shri Medical & General Stores (<1km... Raj Khodal Stores (<1km), A1 Stores (<1km), Radha Krishna Netting Solution (<1km... Maharashtra Footwear (<1km), Timbuctoo (<1km), Furnistar (<1km)

Hospitals & Clinics

Samarth Hospital (<0.5km), Samarth Hospital-ER (<0.5km), Renaissance Clinic (<1km), Prince Optic,

Uni Plus India Medicare Center (<1km), Dr. Bhanushalis Glints Dental Studio ... Fine Vision Optical (<1km), Dr R K Panchal Dental Clinic (<1km), Pantjali Chikitsalaya (<1km), Clino Path Laboratory (<1km), Satva Wellness (<1km), Godrej Memorial Hospital-ER (<1km), Godrej Memorial Hospital (<1km)

Petrol Station

Bharat Petroleum (<0.5km), Western Petroleum (<1km), Indian Oil (<1km)

Recreation

A L Global Bevearges (<1km)

* All distances are approximate

Properties

Lodha Vikhroli News

- **Lodha in pact for slum redevelopment project for ₹359 crore**
2 days ago - Macrotech Developers has obtained the development rights of a free sale component of a slum redevelopment project in Worli, Mumbai for ₹359.5 crore ... free sale component will be developed by the ... [more](#)
- **Mumbai News: '60 Retired BMC Employees Have Started Getting Pension,' Claims Lodha**
4 days ago - The Guardian Minister of Mumbai Suburbs, Mangal Prabhat Lodha, has claimed that 60 retired BMC employees have started getting their pension merely three days after conducting the Pension Adalat. [more](#)
- **Mumbai: Minor held for molesting female constable**
16 days ago - The incident occurred around 9.30 pm on Friday. The constable, a resident of Vikhroli, was walking with her cousin and friend towards her uncle's house for dinner, when an unknown person came ... [more](#)
- **Adani Energy Commissions Mumbai's Khargar-Vikhroli Transmission Line**
15 days ago - Adani Energy Solutions Ltd. (earlier Adani Transmission Ltd.) has established Mumbai's first ever 400 KV connection, with a double circuit transmission line commissioning. The Khargar Vikhroli ... [more](#)
- **16 Best Psychoanalysis Doctors near Vikhroli, Mumbai**
24 days ago - A set of theories (talk therapy) that aims at treating mental disorders by bringing unconscious or deeply buried thoughts and emotions on the surface (on the conscious mind) so that these experiences ... [more](#)
- **Mumbai: Adani Energy Solutions commissions Khargar-Vikhroli transmission line to supply additional 1,000 MW of power**
15 days ago - Adani has commissioned the Khargar-Vikhroli transmission line It is a 400 kV double circuit transmission line that connects the Khargar substation to the Vikhroli substation in Mumbai This will ... [more](#)
- **Siddhivinayak Clinic**
8 days ago - Siddhivinayak Clinic is a Consultant Physician Clinic in Vikhroli West, Mumbai. The clinic is visited by doctors like Dr. Abhinandan H. Mishra. The timings of Siddhivinayak Clinic are: Mon-Sat: ... [more](#)

Expert Reviews on Lodha Vikhroli

Explore

[Projects in Mumbai](#)

[Brokers in Mumbai](#)

More Information

Report a problem with this listing

Is any information on this page outdated or incorrect?

[Report it!](#)

Disclaimer: All information is provided by advertisers, including builders/agents/owners, or collected from publicly available sources and may not be verified under RERA. Any information provided on this website, including facts and figures, should be verified independently, including via the relevant RERA website, before entering into any transaction. PropertyWala.com is only an advertising platform to help connect buyers and sellers and is not a party to any transaction, nor shall be responsible or liable to resolve any disputes between them.

[Home](#) » [Mumbai Real Estate](#) » [Projects in Mumbai](#) » [Lodha Vikhroli - Vikhroli West, Mumbai](#)