

## 3 Bedroom Apartment / Flat for sale in Panchsheel Enclave, New Delhi

7.45 crores



### New Luxury Builder Floor For Sale In Panchsheel Enclave South Delhi

New Luxury Builder Floor For Sale In Panchsheel Enclave...

- Area: 2385 SqFeet ▾
- Bedrooms: Three
- Bathrooms: Four
- Floor: Second
- Total Floors: Four
- Facing: North East
- Furnished: Semi Furnished
- Transaction: New Property
- Price: 74,500,000
- Rate: 31,237 per SqFeet **+20%**
- Age Of Construction: 1 Years
- Possession: Within 3 Months

### Advertiser Details

**JDM Estate**  
JUPITER DEAL MANAGEMENT  
Owner/Proprietor  
Greater Kailash I, New Delhi  
mob: 8802888006  
mail: jdmestate.mb@gmail.com  
tel:  
www.propertywala.com/jdm-estate

Scan QR code to get the contact info on your mobile  
[View all properties by JDM Estate](#)

### Description

**New Luxury Builder Floor For SALE In Panchsheel Enclave South Delhi,**

**Top builder construction,**

**Fully Loaded Modern Kitchen,**

**Elegant and Versatile Layout,**

**Modern Bathroom Fittings,**

**High Speed Elevators,**

**Power back up,**

**Best Quality Fittings and Fixtures,**

**Fully Air-conditioned,**

**Stilt Car Parking,**

**Marble Flooring,**

**Abundant car parking available,**

**High security in gated with cctv cameras and 24x7 private security guards,**

**Beautiful Park Facing,**

**Quiet, Clean and Peaceful Location,**

**Zero Noise pollution,**

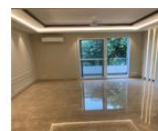
**Prestigious Location of South Delhi,**

JDM specializes in helping you discover the finest residential and commercial properties available for sale, rent, lease, or purchase in South Delhi. Our extensive range of options includes everything from 3, 4, and 5-bedroom apartments to 24-bedroom new builder floor apartments and independent houses. These properties are situated in diverse locations, including prestigious areas such as Gulmohar Park, Neeti Bagh, Safdarjung Development Area, Anand Lok, Golf Links, Sunder Nagar, Jor Bagh, Chanakyapuri, Malcha Marg, Maharani Bagh, Defence Colony, Jangpura, Panchsheel Park, Friends Colony East/West, Hauz Khas Enclave, New Friends Colony, GK-1 Greater Kailash, Vasant Vihar, Anand Niketan, Shanti Niketan, Westend, Saket, SJE (Safdarjung Enclave), Green Park, Geetanjali Enclave, Panchsheel Enclave, and South Extension-2, Sarvodaya Enclave.

When you call, don't forget to mention that you saw this ad on PropertyWala.com.

### Location

### Pictures



Living Room



Bedroom



Kitchen



Bathroom

\* Location may be approximate

## Landmarks

### Nearby Localities

[Soami Nagar](#), [Greater Kailash I](#), [Siri Fort](#), [Panchsheel Park](#), [Asiad Village](#), [Greater Kailash Encl II](#), [Anand Lok](#), [Greater Kailash II](#), [Amar Colony](#), [Uday Park](#)

\* All distances are approximate

## Locality Reviews

Panchsheel Enclave, New Delhi

Panchsheel Enclave is the Resident Profile It is a High Net worth Individuals (HNI) area. Its Quiet, Peaceful, Secure, with Easy-Quick access to Top Delhi Locations.

### Pros:

- Educational, Hospital, Clubs, Hospitality close by

### Cons:

- Cost is high. Its primarily for the H.N.I.

Posted: May 21, 2016 by Mahendra LastS

Panchsheel Enclave, New Delhi is rated 5 out of 10 based on 1 user reviews.

Disclaimer: The reviews are opinions of PropertyWala.com members, and not of PropertyWala.com.

## Explore

[Similar Properties](#)

[Properties in Panchsheel Enclave, New Delhi](#)

[Projects in New Delhi](#)

[Brokers in New Delhi](#)

## More Information

## Report a problem with this listing

Is this property no longer available or has incorrect information?

[Report it!](#)

**Disclaimer:** All information is provided by advertisers and should be verified independently before entering into any transaction. You may visit the relevant RERA website of your state to verify the details of this property. PropertyWala.com is only an advertising platform to help connect buyers and sellers and is not a party to any transactions, nor shall be responsible or liable to resolve any disputes between them.