

LGCL Pueblo - Rayasandra, Bangalore



facilitated with all the amenities and needs

LGCL Pueblo by LGCL at Rayasandra in Bangalore offers residential project that host 4 bhk villas project in various sizes.

- Project ID: J711189601
- Builder: LGCL
- Location: LGCL Pueblo, Rayasandra, Bangalore (Karnataka)
- Completion Date: Jun, 2019
- Status: Completed

Description

LGCL Pueblo is a well-equipped residential Property developed by LGCL. Located in Rayasandra, Bangalore. LGCL Pueblo is an exquisite and properly planned gated community Spread over 3.5 acres. The project host 4 bhk villas project in the size ranges in between 2483 to 3027 sqft. with best amenities provided for the residents. The location of LGCL Pueblo is one of the most prestigious addresses of Bangalore with many facilities and utilities nearby Rayasandra. Rayasandra is a fast-growing and developing locality of Bangalore.

RERA No :- PRM/KA/RERA/1251/310/PR/171014/000286

Amenities:

- Gymnasium
- Swimming Pool
- Children's play area
- Club House
- Landscaped Gardens
- Indoor Games
- Jogging Track
- Multipurpose Room
- Power Backup

LGCL Group was founded solely on the purpose of catering exclusively to urban people with high aspirations. LGCL is a shining example of the power of positive thinking with a combination of calculated risk and in-depth knowledge. Based on the single-minded ethos of developing "thinking spaces" the builders have constructed exquisite residential spaces for the uber-ultra urbane populace. They specialise in construction of villas, luxury residential apartments that ideally complement the passions, aspirations and also emotions of the people. Every real estate project undertaken by the group promises to offer the best in terms of architectural grandeur and facilities in every aspect.

Features

Luxury Features

- Power Back-up ■ High Speed Internet

Lot Features

- Private Terrace ■ Balcony

Recreation

- Swimming Pool ■ Park ■ Fitness Centre / GYM
- Club / Community Center

Security Features

- Security Guards ■ Intercom Facility

Exterior Features

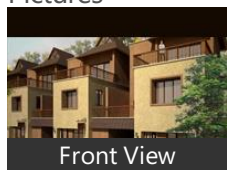
- Reserved Parking ■ Visitor Parking

Maintenance

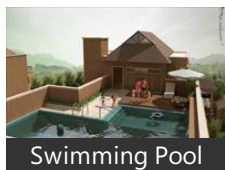
- Maintenance Staff ■ Rain Water Harvesting

Gallery

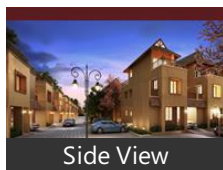
Pictures



Front View



Swimming Pool



Side View

Floor Plans



Master Plan



Floor Plan A



Floor Plan B



Floor Plan C



Floor Plan D



Floor Plan E



Floor Plan F



Location Map

Documents



Brochure

Location

Landmarks

Hotel

Manipal County (<4km), The Oterra (<3km), Radha Regent Bengaluru (<5km), Lemon Tree Hotel Electronics City Be.. ibis Bengaluru Hosur Road (<8km), Grand Mercure Bengaluru (<11km), Sai Vishram Business Hotel (<7km), Keys Hotel-Hosur Road (<4km), Hotel Empire International Koramang. Citrus Bangalore (<9km), Europa 360 (<14km), Octave Hotel & Spa (<13km), Ginger-Domlur Inner Ring Road (<14.. Hotel Ekaa-Kudlu (<6km), Crystal Castle (<14km), Davanam Sarovar Portico Suites (<11.. Nandhana Grand (<13km), Oyo 499 Hotel Umerkot Residency (<.. Radiant Resort (<12km), Edition O 30060 Koramangala Forum... ibis Bengaluru Outer Ring Road Hote.. Nisargha Service Apartment (<10km), Lords Plaza Electronic City Bangalore.. S Hotel (<12km), Oyo 10135 Hotel Ecohaya (<11km), Aloft Bengaluru Cessna Business Par... Oyo Flagship 475 Marathahalli (<14k... OYO 1327 Inchara Hotel (<14km)

Building

Concorde Midway City (<2km), SJR Equinox (<3km), Shri Sai Acropolis (<1km), Ittina Mahavir (<5km), Ajmera Infinity (<5km), SNN Raj Serenity-Main Entrance (<8k.. Mahendra Elena (<5km), Sobha Silicon Oasis (<1km), Aratt Feli Cita-Main Entrance (<7km), Siddhartha Sapphire (<4km), Manar Silver Shadows (<7km), Cinnamon (<5km), Salarpuria Serenity (<8km), Klassik Nest (<7km), Vijaya Enclave Nethravathi Block ■■■. DLF Newtown (<8km), Kirstal Tiara (<9km), GR Lavender (<12km), Bhuvana Greens (<6km), Elan (<8km), Raja Aristos (<10km), Asset Aura (<12km), Sun City Gloria (<8km)

Public Transport

Koodlu Gate (<5km), Hosa Road (<2km), Bmtc Bus Depot 19-Electronic City (<.. Carmelaram Railway Station (<9km), Central Silk Board (<10km), BMTC Bus Stand-Wipro (<5km), Madiwala (<11km)

Business & Services

HCL Technologies (<4km), Siemens Technology & Services (<4k.. Tech Mahindra (<3km), Ozone Manay Technology Park (<6k... Biocon (<6km), Wipro Corporate Office (<8km), Ecospace Business Park (<10km), Land Maark (<5km), Decathlon Sports India (<8km), Sfo Technologies-Main Gate (<4km), Micro Labs (<8km)

Restaurant & Shops

D Mart (<4km), Sangeetha Telecom (<9km), Magic Oven (<4km), My Baby Store (<9km), SONY Center SONY Center II (<13km)

Recreation

PLaY Arena (<7km), Galaxy Paradise Digital Cinema (<7km Cycle World (<2km), Quechua Decathlon Bannerghatta (<.. The Koramangala Club (<13km), DECATHLON (<8km)

Shopping Centre

Bangalore Central (<9km), Metro Cash and Carry (<1km), Royal Meenakshi Mall (<11km), Gopalan Innovation Mall (<13km), Shoppers Stop (<12km)

Hostel

Royale Guest House (<5km), Shri Sai PG for Gents (<5km), Xime Hostel (<3km)

ATM/Bank/Exchange

State Bank of India-Electronic City 2n.. ICICI Bank (<4km)

Hospitals & Clinics

Sakra World Hospital (<11km), Indian Opticals (<2km), Apollo Hospitals (<11km), Narayana Hrudayalaya Speciality Clin.. Sri Jayadeva Institute of Cardiovascu... Jayashree Multispeciality Hospital (<... Patanjali H. S. R. (<8km)

Educational Facility

Oxford College of Engineering (<8km.

* All distances are approximate

Properties

LGCL Pueblo News

Expert Reviews on LGCL Pueblo

Explore

[Projects in Bangalore](#)

[Brokers in Bangalore](#)

More Information

Report a problem with this listing

Is any information on this page outdated or incorrect?

[Report it!](#)

Disclaimer: All information is provided by advertisers, including builders/agents/owners, or collected from publicly available sources and may not be verified under RERA. Any information provided on this website, including facts and figures, should be verified independently, including via the relevant RERA website, before entering into any transaction. PropertyWala.com is only an advertising platform to help connect buyers and sellers and is not a party to any transaction, nor shall be responsible or liable to resolve any disputes between them.