

2 Bedroom Apartment / Flat for rent in Wagholi, Pune

20,000



★ Featured

2BHK Furnished At 20k AT Baif Road Wagholi

Baif Road, Wagholi, Pune - 412207 (Maharashtra)

- Area: 1050 SqFeet ▾
- Bedrooms: Two
- Bathrooms: Two
- Floor: Third
- Total Floors: Six
- Facing: East
- Furnished: Furnished
- Lease Period: 11 Months
- Monthly Rent: 20,000
- Rate: 19 per SqFeet +5%
- Age Of Construction: 5 Years
- Available: Immediate/Ready to move

Advertiser Details

Vishakha Properties
Vishakha Nalawade
General Manager
Wagholi, Pune
mob: 9922257239
tel:
mail:
www.propertywala.com/vishakha-properties

Scan QR code to get the contact info on your mobile
[View all properties by Vishakha Properties](#)

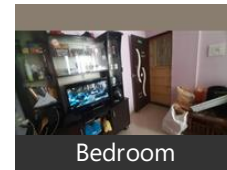
Description

2BHK furnished available for rent at Baif road Wagholi 20k rent and 2months deposit, at shree sidhivinayak nagari baif road Wagholi,.

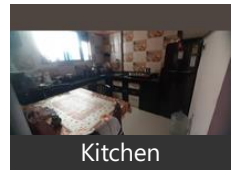
When you contact, don't forget to mention that you saw this ad on PropertyWala.com.

Location

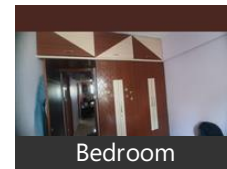
Pictures



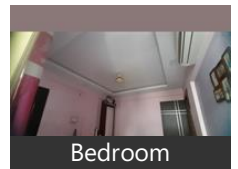
Bedroom



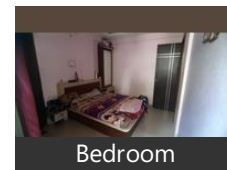
Kitchen



Bedroom



Bedroom



Bedroom

* Location is approximate

Locality Reviews

Wagholi, Pune

One of the best society's in Wagholi. All amenities available in the society. Gated security for a family and children with elders and no for pets restriction

Pros:

- Close to highway and airport

Posted: Nov 17, 2021 by Punit Pattanshetti

Wagholi is faster growing place

In Wagholi lots of well-known developers

In Wagholi within 5 km 5 international schools

In Wagholi within 5 to 6 km multi specialist hospitals

Near by wagholi there are IT hubs

Pros:

- In Wagholi stay 3 lakhs above it people

Posted: Jan 16, 2019 by [Rahul Patil \(Prophunt Advisory\)](#)

Wagholi is a very upcoming area with rapid development, good roads & connectivity to the city Airport & railway station. Ring road which will connect all the highways will be passing through wadbolai near to wagholi and a road connecting EON it park to ring road is under construction.

Pros:

- Ring road
- Concrete road from Eon IT park to Ring road
- New International Schools & Colleges are coming up

Posted: May 19, 2017 by Feroz Khan

WAGHOLI Located in East Pune, Wagholi is a developing locality of the city. Wagholi has a number of upcoming projects that are available at pocket friendly prices. Because the locality offers affordable residential solutions, the demand in the locality comes from IT professionals. The locality has a well-developed and posh neighborhood. The area is well connected to Khandala Loni Road connecting it to other parts of the city. The locality also has good infrastructure that further smoothens the connectivity.

Pros:

- Affordable houses

- Close proximity to IT and MIDC areas
- Educational Hub

Cons:

- Improper Water Facility
- Unorganized commercials
- Internal Roads

Posted: Apr 5, 2017 by [Rohit Kumar \(Clisaco First Realty\)](#)

WAGHOLI - A budding new township coming up in East Pune. A educational hub with lot of excellent schools and colleges. Lexicon International, Poddar, Prodigy Public School, Sanskriti School to name a few. Moze College of Engineering, GH Raison Institute of Engineering and Technology, Shree Ramchandra College of Engineering, Bhivarabai Sawant Institute of Technology & Research, JSPM'S Imperial College of Engineering & Research, Kautilya Institute of Management & Research and many more colleges. The Wagholi 'Bhaji' vegetable market on Tuesday is a source of fresh vegetables and fruits. The Wagholi market can provide all sorts of needs be it groceries, electricals, households needs, furniture etc. There are many Banks & ATM like, SBI, OBC, BoM, ICICI, IDBI, Canara Bank. Wagholi is well connected by Public transport from Pune Station and Hadapsar. There are plenty of builders who are brining projects in Wagholi so the availability of flats, bungalows for purchase or rent is also plenty.

Pros:

- Availability of all needs
- Public and Private Transportation
- Near to Airport & Malls

Cons:

- Electricity problem sometimes.
- Water

Posted: Sep 17, 2016 by Balraj Thapa

Wagholi is best location of Pune located 15 minute away from airport and 10 minute ahead from Kharadi Eon IT Park & Reliance Mart. Daily need items accessible with in 500 m. Major Hub for Schools (Lexicon , Podar international & Sanskruti, Moze collage and jspm collage) All major electricity and water supply connections are already installed.

Pros:

- Best Location of Pune

Posted: May 14, 2016 by Satish Tanwar

Wagholi is becoming educational Hub. Almost 15+ institutes are in just 3 km of area.

Pros:

- Emerging Educational Hub

Posted: Dec 19, 2015 by [Shree Vishnu Realtors \(Shree Vishnu Realtors\)](#)

Wagholi is calm and quiet locality off the Pune - Nagar Road (just 1500 feet away from the main road)

Pros:

- Good societies at your neighbourhood, without slums

Posted: Nov 1, 2014 by Achuthankutty Menon

DP road connecting with Wagholi to EON IT Park, Kharadi and connected to Shikrapur.

Pros:

- Wagholi gaon coming under PMC DP
- Developing at very fast pace.

Posted: Jul 28, 2014 by [Jennifer A \(Gulmohar Development\)](#)

Wagholi is the best place for investment. It is 14 km from Pune station. All facilities available near to Kharadi IT park.

Pros:

- The perfect place
- Maximum returns

Posted: Sep 12, 2013 by [Vishwajit Mohol \(Live Media Advertising\)](#)

Wagholi, Pune is rated 8 out of 10 based on 10 user reviews.

Disclaimer: The reviews are opinions of PropertyWala.com members, and not of PropertyWala.com.

Explore

[Similar Properties](#)

[Properties in Wagholi, Pune](#)

[Projects in Pune](#)

[Brokers in Pune](#)

More Information

Report a problem with this listing

Is this property no longer available or has incorrect information?

[Report it!](#)

Disclaimer: All information is provided by advertisers and should be verified independently before entering into any transaction. You may visit the relevant RERA website of your state to verify the details of this property. PropertyWala.com is only an advertising platform to help connect buyers and sellers and is not a party to any transactions, nor shall be responsible or liable to resolve any disputes between them.