

2 Bedroom Apartment / Flat for rent in Whitefield, Bangalore

33,000



2 BHK Flat Available In Whitefield Bangalore

Sri Nidhi Enclave, Nagondanahalli, Whitefield, Bangalore..

- Area: 1200 SqFeet ▾
- Bedrooms: Two
- Bathrooms: Two
- Floor: First
- Total Floors: Two
- Facing: East
- Furnished: Semi Furnished
- Lease Period: 11 Months
- Monthly Rent: 33,000
- Rate: 28 per SqFeet -5%
- Age Of Construction: 1 Years
- Available: Immediate/Ready to move

Advertiser Details

Perfect Solution
Sarfraz Mohammed
Broker

Whitefield, Bangalore
mob: 9741509001
tel: +91-814-7411745
mail: sarfarazwhitefield@gmail.com
propertywala.com/perfect-solution-bangalore

Scan QR code to get the contact info on your mobile

[View all properties by Perfect Solution](#)

Description

2 bhk flat, 2 bedroom 2 bathroom 2 balcony modeler kitchen wardrobe lift power backup security car parking

When you call, please mention that you saw this ad on PropertyWala.

Features

General

- Power Back-up
- Lifts

Lot

- Balcony
- Basement
- Corner Location

Exterior

- Reserved Parking
- Visitor Parking

Maintenance

- Water Supply / Storage
- Waste Disposal

Security

- Security Guards
- Fire Alarm

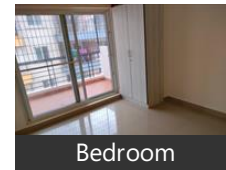
Interior

- Modular Kitchen
- Feng Shui / Vaastu Compliant

Recreation

- Swimming Pool
- Club / Community Center

Pictures



Bedroom

* Location may be approximate

Landmarks

ATM/Bank/Exchange

Idfc Bank (<0.5km), Kotak Mahindra Bank (<0.5km), PNB Housing Finance Ltd (<0.5km), Standard Chartered (<0.5km), Bank of Baroda (<0.5km), City Union Bank (<0.5km), ICICI Bank (<0.5km), Karnataka Bank (<0.5km), HDFC Bank (<0.5km), State Bank of India (<0.5km), Idfc First Bank-Itpb (<0.5km), Canara Bank-Sri Sathya Sai (<0.5km)

Hospitals & Clinics

V Care Pet Polyclinic (<0.5km), Spacemaker White Field (<0.5km), Thyrocare (<0.5km), Dr O Grady (<0.5km), Lenskart (<0.5km), M.S Clinic (<0.5km), O, Dermatology & Cosmetology (<0.5km), Life Span Diabetes Clinic (<0.5km), Whitefield Physiotherapy Clinic (<0.5km), Sanjeevani Clinic (<0.5km), Specialists Dental Clinic (<0.5km), Shri Sai Child Clinic (<0.5km), Cure N Care Homeopathic (<0.5km), Sai Dental Care Center (<0.5km), Keral Ayurvedic Clinic (<0.5km), Pradhan Mantri Bhartiya Jan Aushad... Pushpa Nursing Home (<0.5km), Dr Madhushree Clinic (<0.5km), Sri Sathya Sai Baba Hospital (<0.5km), Sri Sathya Sai Baba Hospital-ER (<0.5km), Vasana Eye Care (<0.5km), Telerad RXDX Healthcare (<0.5km), Srinivasa Clinic (<0.5km), Feathers Paediatric Therapy Center (<0.5km)

Restaurant & Shops

Shri Chowdeshwari Rice Traders (<0.5km), Whitefield Provision Stores (<0.5km), Bharath Stores (<0.5km), Foot Style Footwear (<0.5km), Brothers Stores (<0.5km), Fabindia (<0.5km), Amralata Boutique (<0.5km)

K. N. K. Fashions (<0.5km), Macroman (<0.5km), My Own (<0.5km), A S Pooja Stores (<0.5km), Pawan Textiles (<0.5km), Poonam Cloth Centre (<0.5km), Hopcoms (<0.5km), Bharath Boots Bazaar (<0.5km), R. K. Textiles (<0.5km), Pavan Provision Stores (<0.5km), Mysore Textiles (<0.5km), Shoe Max (<0.5km), Hinlaj Mehta Textile (<0.5km), Shine Footwear (<0.5km), Dinesh Creations (<0.5km), Suraj Textile (<0.5km), smart Kids (<0.5km), Marigold (<0.5km), M. M. General Stores (<0.5km), Rajeshwar Textiles (<0.5km), [more...](#)

Locality Reviews

Whitefield, Bangalore

Whitefield in Bangalore, India, has long been a hub for information technology (IT) and business process outsourcing (BPO) companies. With the COVID-19 pandemic accelerating the adoption of remote work, many have speculated about the future of office space in this area. One potential scenario is that companies will continue to downsize their physical office spaces, as remote work has proven successful for many businesses. Employees may only come into the office for meetings or specific tasks that require in-person collaboration, and shared office spaces or coworking spaces may become more popular as a cost-effective solution for companies that still require some physical office presence.

Another possibility is that companies will reevaluate the design of their offices to prioritize employee wellness and collaboration. This may mean more open floor plans, outdoor spaces, and amenities like gyms or meditation rooms. With the rise of hybrid work models, where employees split their time between remote work and office work, the office space may become a place for fostering company culture and social connection.

Furthermore, the pandemic has also highlighted the importance of having a robust digital infrastructure for remote work. As a result, the future of office spaces may involve more advanced technology, such as virtual reality and augmented reality tools, to facilitate remote collaboration and communication.

In addition, Whitefield may also see an increase in the number of flexible office spaces. These spaces allow companies to rent offices or workstations on a short-term or as-needed basis, which can be especially beneficial for startups or companies with fluctuating staffing needs.

Overall, the future of office space in Whitefield, Bangalore, is likely to be shaped by the ongoing pandemic, as well as broader trends in remote work and workplace design.

Pros:

- *good place to work*
- *all amenities nearby*

Cons:

- *high congestion due to infra work*

Posted: Mar 23, 2023 by Arvind V

Whitefield is the major it hub with so many international companies and world class infrastructures

Pros:

- *School, transportation, Hospitals*

Posted: Aug 15, 2021 by Prem Singh

Whitefield is prime location for it hub. Many schools, colleges, markets and malls are there. Convenient to travel and good roads.

Pros:

- *IT COMPANIES NEAR BY*
- *SCHOOL COLLEGES*
- *MALLS Nearby*

Posted: Jun 11, 2020 by Vishal Kumar

Whitefield is the main it hub with itpb zone linked by metro and outer ring road .

It is a highly residential cum commercial zone with prices escalating many folds.It has all the modern amenities, malls ,multiplexes, internationally recognised schools etc.Connectivity is the hallmark of Whitefield to any corner of bengaluru including the kempegowda international airport.

Pros:

- *HIGHLY RATED*
- *GOOD SURROUNDINGS*
- *METRO IN PIPELINE*

Cons:

- *OUTER RING ROAD TOO CONGESTED*
- *INCREASE IN TRAVEL TIME*
- *SOME UNPLANNED AREAS*

Posted: Feb 19, 2020 by Sanketh B

Metro connectivity has increased the value of property around Whitefield which has concentration of many IT related businesses house and star hotel...the property can become an ideal location for people with great amenities like mall theatre school hospital etc.

Pros:

- *Close to work place reduce travel time and being away from city you get good environment.*

Cons:

- *Road and amenities should be concentrated on*

Posted: Feb 8, 2020 by Nischal S

One of the prime locations. IT hub with good connectivity. Green and peaceful environment. Nearby schools, hospitals and other public facilities.

Pros:

- *Prime location*
- *Posh locality*
- *Good connectivity*

Cons:

- *Traffic congestion*

Posted: Jun 24, 2019 by Ammu Reddy

Whitefield is one of the fastest growing suburbs of Bangalore. Being a IT hub, it has many reputed schools, hospitals and shopping malls within close proximity. Jagriti theatre is a centre for cultural activities. Many major restaurant chains and commercial brands have outlets here. Work has begun for Metro connectivity. Many localities are peaceful and green. The bus connectivity is very good in Brookfield area. The traffic is heavy in peak hours but measures are being taken to improve by constructing underpasses and signal free corridors.

Pros:

- Schools, hospitals, malls in close range. IT hub.
- Peaceful and green in many localities
- Good connectivity

Cons:

- Traffic is heavy during peak hours

Posted: May 29, 2017 by Rita Mukherjee

The development plan of Srishigra palm of township, which includes 2,3,4bhk villas of residences, Senior living community, is a wholesome mix of residential property which includes school, hospital, besides other world class amenities

Pros:

- greenary location
- best price
- faster development

Posted: Apr 12, 2017 by Prakash a

Forum Value mall & mall at ITPL are good weekend spots for movies/shopping. Also hospitals like Vydehi, Columbia Asia is nearby whitefield bus stop.

Pros:

- Silent area

Cons:

- Traffic is to much

Posted: Jan 21, 2017 by SANDESH B

The 'Whitefield', where the 'whites' once lived and cultivated the 'fields' is far to the east of 'Bengalure' founded by the erstwhile ruler 'Kempe Gowda'. Practically, Whitefield is still on Eastern edge of Bengaluru, though it has vastly transformed by becoming the Technological and Industrial hub, employing many many people. The voluminous growth of Whitfield was however not matched by the growth of its infrastructure. Never the less, it remains to be the 'pensioners' paradise, with its 'lung spaces' to the East, thanks to the 'green belts' and water-bodies around the Whitefield. When the planned 'Metro' connectivity is implemented, the Whitefield will be close enough to the busy CBD.

Pros:

- serene atmosphere with green belts and water-bodies
- A lot of employment oppurtunities
- Well connected to CBD by the Railway, Bus service by BMTC and the propsed Metro

Cons:

- Presently, highly congested road-traffic
- Low ground-water resource
- slums amidst high-rises and pollution

Posted: Sep 14, 2016 by Bellam Reddy

Whitefield, Bangalore is rated 7 out of 10 based on 10 user reviews.

Disclaimer: The reviews are opinions of PropertyWala.com members, and not of PropertyWala.com.

Explore

[Similar Properties](#)

[Properties in Whitefield, Bangalore](#)

[Projects in Bangalore](#)

[Brokers in Bangalore](#)

More Information

Report a problem with this listing

Is this property no longer available or has incorrect information?

[Report it!](#)

Disclaimer: All information is provided by advertisers and should be verified independently before entering into any transaction. You may visit the relevant RERA website of your state to verify the details of this property. PropertyWala.com is only an advertising platform to help connect buyers and sellers and is not a party to any transactions, nor shall be responsible or liable to resolve any disputes between them.