

4 Bedroom Apartment / Flat for sale in Panchsheel Park, New Delhi

13.5 crores



★ Featured

Ready To Move Builder Floor In N- Block Panchsheel Park

For Sale - Block- N(North), Panchsheel Park, New Delhi - ...

- Area: 4200 SqFeet ▼
- Bedrooms: Four
- Bathrooms: Five
- Price: 135,000,000
- Rate: 32,143 per SqFeet
- Possession: Immediate/Ready to move

Advertiser Details

Sanjeet Sharma
Property Agent / Broker / Consultant
Vasant Vihar, New Delhi

mob: 9810069114
tel: 11-46541532
mail:
www.sharmaestates.in

Scan QR code to get the contact info on your mobile
[View all properties by Sharma Estates](#)

Description

Panchsheel park, 3 side corner plot, Brand new with 5 star construction on first floor on very wide road , Having 4 spacious bedrooms with attached bath rooms , 1 powder room , Separate drawing/ dining room , Master bedroom and 1 other bedroom with wooden flooring , Lobby , Store , Servant quarter , Siemens furnished modular kitchen , Separate gate for reserved car parking , Italian marble flooring , Rich specifications , Close to the panchshila club and market , This builder floor situated at one of the top super posh colony of south delhi area.

For more details please contact, Brokers please excused...

We deals only in prime location of south delhi and central delhi area as shanti niketan, Westend, Anand niketan, Vasant vihar, Golf links, Jorbagh, Chanakyapuri, Prithviraj road, Aurangzeb road, Connaught place, Sunder nagar, Panchsheel park, Hauzkhas enclave, Sda, Defence colony.

When you call, don't forget to mention that you found this ad on PropertyWala.com.

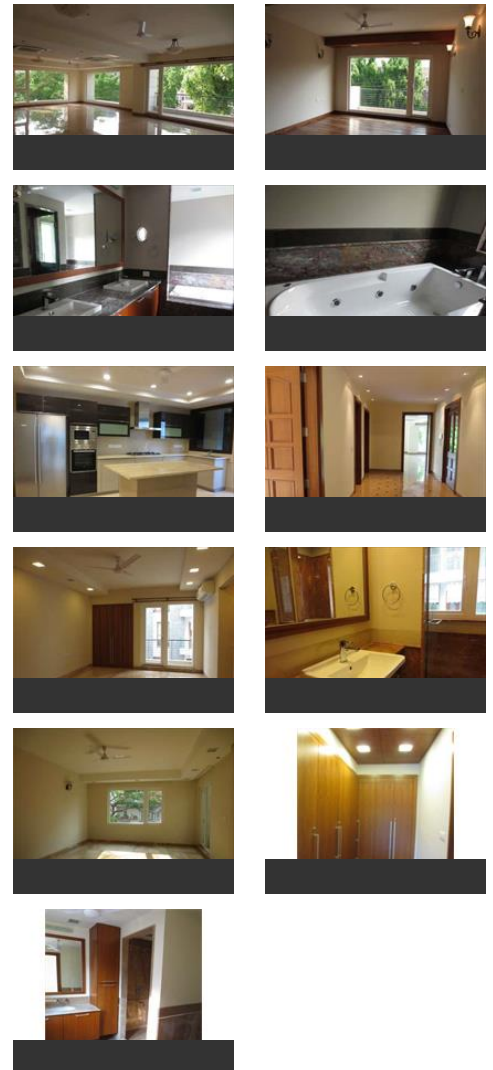
Features

Other features

- Builtup Area: 4200 Sq.Ft.
- Freehold ownership
- North-East Facing
- Balconies: More than 3
- Floor: 1st of 4 Floors
- Immediate possession
- 0 to 1 year old
- Society: N- Block Panchsheel Park
- Additional Rooms: Pooja Room, Servant Room
- Marble Flooring
- Furnishing: Semifurnished
- Reserved Parking

Location

Pictures



* Location may be approximate

Landmarks

Nearby Localities

[Sarvapriya Vihar](#), [Asiad Village](#), [Gulmohar Park](#), [Shivalik](#), [Savitri Nagar](#), [Hauz Khas Enclave](#), [Malviya Nagar](#), [Soami Nagar](#), [Sarvodaya Enclave](#), [Siri Fort](#), [Mayfair Garden](#), [Sarvapriya Vihar](#), [Asiad Village](#), [Gulmohar Park](#), [Shivalik](#), [Savitri Nagar](#), [Hauz Khas Enclave](#), [Malviya Nagar](#), [Soami Nagar](#), [Sarvodaya Enclave](#), [Mayfair Garden](#), [Shahpur Jat](#), [Sarvapriya Vihar](#), [Asiad Village](#), [Gulmohar Park](#), [Shivalik](#), [Savitri Nagar](#), [Chirag Delhi](#), [Hauz Khas Enclave](#), [Malviya Nagar](#), [Sarvapriya Vihar](#), [Asiad Village](#), [Gulmohar Park](#), [Shivalik](#), [Savitri Nagar](#), [Chirag Delhi](#), [Hauz Khas Enclave](#), [Malviya Nagar](#), [Soami Nagar](#), [Sarvodaya Enclave](#), [Siri Fort](#), [Mayfair Garden](#), [Sahapurjat Village](#), [Shahpur Jat](#), [Asiad Village](#), [Gulmohar Park](#), [Savitri Nagar](#), [Hauz Khas Enclave](#), [Malviya Nagar](#), [Soami Nagar](#), [Sarvodaya Enclave](#), [Mayfair Garden](#), [Shahpur Jat](#), [Asiad Village](#), [Gulmohar Park](#), [Savitri Nagar](#), [Hauz Khas Enclave](#), [Malviya Nagar](#)

