

1 Bedroom Apartment / Flat for sale in Kalyan, Thane

10 - 20 lacs



JUST PAY 50K IN KALYAN N BOOK YOUR DREAM HOME

BAPSAI GAON, Kalyan, Thane (Maharashtra)

- Area: 313 SqFeet ▾
- Bathrooms: One
- Total Floors: Four
- Furnished: Unfurnished
- Price: 1,539,000
- Rate: 4,917 per SqFeet **-25%**
- Age Of Construction: 1 Years
- Possession: Immediate/Ready to move
- Bedrooms: One
- Floor: Second
- Facing: North East
- Transaction: New Property

Description

Location - Bapsai Village, Kalyan Murbad Road.
Distance - 6.5 km From Titwala
13 km From Kalyan

Amenities -

Lift with power backup
Complex Bus Service to- From Titwala/ Kalyan Rly. Station
Apple Parking System
Ample Water Supply
Garden /Children Play area And Multi Purpose Hall
Solar Water Heating System
24 Hours Security, CCTV Camera.
5 mints From Proposed Railway Station
National Highway 222(Kalyam - Ahmed Nagar Highway) Touch.

Special Holi Offer
Get Tow Wheeler at Possession

Total floor - G + 4 (7 wing Complex)

Area -
1 Rk - 313 = 15,39,000 (All Inclusive)
1 Bhk - 402 = 19,35,000 (All Inclusive)
2 bhk - 685 = 31,57,000 (All Inclusive)
* Ready To Move*
90% loan available from all nationalised banks

When you contact, don't forget to mention that you saw this ad on PropertyWala.com.

Features

General

- Power Back-up

Lot

- Basement ■ Corner Location ■ Park Facing

Exterior

- Reserved Parking ■ Visitor Parking
- Independent Garage

Maintenance

- Maintenance Staff ■ Water Supply / Storage
- Water Softner ■ Boring / Tube-well
- Rain Water Harvesting ■ Waste Disposal

Location

Advertiser Details

The MW Group
Mohini Gosavi
Branch Head

Dombivli, Thane
mob: 8652708006
tel: 7045076195
mail:
www.themwgroup.in

Scan QR code to get the contact info on your mobile
[View all properties by The MW Group](#)

Pictures



Front View



Main Entrance



Main Entrance



Elevation



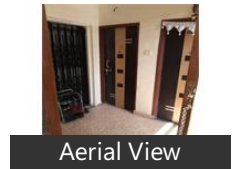
Elevation



Garden



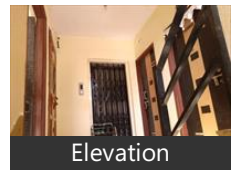
Front View



Aerial View



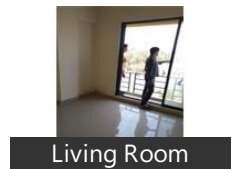
Aerial View



Elevation



Side View



Living Room



Side View

* Location may be approximate

Landmarks

Shopping

Suras Foods (<8km), Shri Sadguru Enterprises (<1km), Sakas Kalyan (<2km), Sai Krupa (Oil Depot And General Sto.. Konkan Flavours (<7km), Radhakrushna Dryfruits (<7km), Dolas Paan Bidi Shop (<8km), Chintamani Enterprises (<8km), Konkan Utpadit Vikri Kendra (<8km), Nanukaka (<8km), Agraj Foods (Paranjpe Enterprises) (<.. Sandhyatai Papad (<8km), Dongre Foods (<9km), Aaswad (<9km), Annapurna Pith Ghar (<9km), Mana Collections (<9km), Jogmaya Provisional Stores (<9km), MANDAL & SON, Ashrafiya Medical &General Store Sh... Satyanand Kirana Stores (<12km)

Restaurants & Clubs

Ribbons & Balloons (<8km), Monginis Cake Shop (<8km), Monginis (<4km), Monginis Cake Shop (<1km), Samrat Bread (<5km), Ramesh Sweets And Cakes (<4km), Ribbons And Balloons (<1km), le gateau (<1km), Delicious (<2km), Monginis Cake Shop (<2km), Jahagirdar bakers (<2km), Denish - The Cake Shop (<2km), Ribbons & Balloons cake shop (<2km. Divine Delights Home Bakes (<2km), The Bake Shop (<2km)

Religious Places

TABOR ASHRAM (<10km), Our Lady of Lourdes Church (<2km), St. Mary, St. James Mar Thoma Church (<7km), St. Thomas Orthodox valiyapally (<1... Mar Thoma Syrian Church Kalyan (<... Vernon Memorial Methodist Church... Our Lady of Fatima Church (<9km), Our Lady Of Lourdes Church (<1km), St George Orthodox Syrian Church (<.. Kirupasanam Church Of Christ Vittha.. St. Joseph Church (<7km), Church of Nazarene (<7km), The Salvation Army Church (<7km), King Of Shalem Church Kurla Camp ... Victory Assembly of God Church (<9... Ambernath Revival Center (<9km), Jerusalem Marthoma Church (<10km.. Sacred Heart Church (<10km)

Offices

Yashoda Hall (<1km), Railway Community Hall (<1km), Kalyan mandap community hall (<2k.. Bhaveshre Hall (<3km), Town Hall (<5km), Gurudawara.Marriaqe Hall (<5km), Shivnaqar- Choudharpada (<more...

Locality Reviews

Kalyan, Thane

This property is in Kalyan east. It is easy to reach this property from Kalyan west too.

Kalyan is connected within short distance to highways towards Central line, Navi Mumbai & National highway. Kalyan is known as a junction, where major trains have halt at kalyan & travelers have a easy route to travel. People of low class to high class can live within Kalyan. All caste family can be met in kalyan. Overall, Kalyan is good location for comfort leaving. Nowadays; people of western line prefers to stay at location like Kalyan

Pros:

- Good connectivity to travel
- Al necessary things is available within short distance

Cons:

- Crowded population.

Posted: May 5, 2017 by Mayur Kolapkar

Kalyan is a very important Railway station on Central Suburb of Mumbai. Kalyan is the main junction from where the central line gets divided into 2 lines i.e Karjat & Kasara.

Kalyan- Dombivli Municipal corporation is the main governing body of Kalyan. Kalyan is very widespread from shil phata to Murbad road & Nashik highway to Haji Malang Road. Kalyan is increasing its boundaries day by day.

A residential property at Kalyan falls on the centre of Mumbai & another Suburban railway line of Karjat and Kasara. It is a highly demanded residential place on central suburbs. This is an ideal place for staying with family.

Kalyan has got a great connectivity & approach roads to Mumbai, Navi Mumbai, Pune & Nashik. Which are in close proximity to Mumbai.

Schools

- Arya Gurukul English School (CBSE)
- Holy cross English School (CBSE)
- Chetna English high School
- St Mary's high School
- Bal Gurukul School
- Model English high School

Colleges & University:

- Ideal engineering College
- Modern College
- Samya Sankalp Mahavidyalaya
- Pendarkar college
- Kelkar college

Hospitals

- Kalyan Metro speciality Hospital
- Tisai Hospital
- Chaitanya Hospital

Mall & Markets

550000 sq ft Mall called Metro Junction composes of an amusement park, Game Zone, Retail Space & multiplex. Big Bazaar, Mc Donald, KFC, Woodland, E-zone, Pantaloon's & many more outlets here.

Pros:

- Very good connectivity

Posted: Apr 23, 2017 by Manoj Lokare

Kalyan is located in the Outskirts of Mumbai. But having good accessibility through all the modes of transport easily within an hour.

Pros:

- *Good Connectivity of Local trains as well as Express*

Posted: Jun 11, 2015 by [Mukesh Chaudhari \(Propdestiny\)](#)

Currently Kalyan is a developing city and all residential apartments and offices are at a very cheap rate. This is the right time to invest in Kalyan and after 5 years investors should get upto 200% returns.

Pros:

- *MMRD*
- *Kalyan station is a junction*
- *Metro mall & Sky walk*
- *Good returns on investment*

Cons:

- *You will have to cross two cavelts to reach rikshaw stand in Kalyan east*
- *Kalyan west main market is nearer to station which has a lot of traffic*

Posted: Jun 24, 2013 by [Ajay jha \(Nirmala Sons Real Estate\)](#)

Explore

[Similar Properties](#)

[Properties in Kalyan, Thane](#)

[Projects in Thane](#)

[Brokers in Thane](#)

More Information

Report a problem with this listing

Is this property no longer available or has incorrect information?

[Report it!](#)

Disclaimer: All information is provided by advertisers and should be verified independently before entering into any transaction. PropertyWala.com is only an advertising platform to help connect buyers and sellers and is not a party to any transactions, nor shall be responsible or liable to resolve any disputes between them.