

Shamik Crimson Bay - Vile Parle East, Mumbai



heart of the city

Shamik Crimson Bay lies at Vile Parle East consists 2&3 bhk apartments available is now ready to be called home as families have started moving in.

- Project ID: J532211898
- Builder: Shamik Enterprises Pvt Ltd
- Location: Shamik Crimson Bay, Vile Parle East, Mumbai - 400057 (Maharashtra)
- Completion Date: Jun, 2020
- Status: Completed

Description

Shamik Crimson Bay lies in Vile Parle (East), Mumbai South West is a ready-to-move housing society. These units are a perfect combination of comfort and style, specifically designed to suit your requirements and conveniences. There are 2 & 3 Bhk apartments available in this project. This housing society is now ready to be called home as families have started moving in.

RERA ID: P51800001902

Amenities :

- Basket Ball Court
- Club House
- Compound Covered Car Parking
- Cycling Track
- Gated Community
- Gym
- Indoor Games
- Landscaped Garden
- Outdoor games
- Play Area
- Rain Water Harvesting
- Swimming Pool
- 24Hrs Backup Electricity
- Fire Safety

The insignia of quality and trust, **Shamik** is the name behind the redevelopment in Vile Parle. One of the top ranked and most preferred developers in redevelopment sector in Mumbai, Shamik has a name that has built on enhanced understanding of customer life style demands, quality construction, strong project execution and timely delivery of projects. Innovative contemporary architecture and patterning with the best specialists from India on various aspects like design, landscaping and engineering has helped the builders to deepen its roots in the realty market of Mumbai.

Features

Luxury Features

- Power Back-up ■ Lifts

Lot Features

- Balcony

Exterior Features

- Reserved Parking ■ Visitor Parking ■ Basement

Maintenance

- Maintenance Staff ■ Water Supply / Storage
- Rain Water Harvesting ■ Waste Disposal

Land Features

- Club / Community Center ■ Adjacent to Main Road
- Park/Green Belt Facing ■ Water Connection
- Electric Connection ■ Close to Hospital
- Close to School ■ Close to Shopping Center/Mall

Security Features

- Security Guards ■ Fire Alarm

Interior Features

- Woodwork ■ Modular Kitchen

Recreation

- Swimming Pool ■ Park ■ Fitness Centre / GYM
- Club / Community Center

Commercial Features

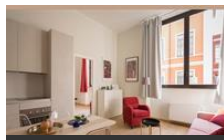
- Cafeteria / Food Court ■ Service / Goods Lift

Gallery

Pictures



Aerial View



Drawing Room

Floor Plans



Location Map



Floor Plan-A



Floor Plan-B



Floor Plan-C



Floor Plan-D



Floor Plan-E



Floor Plan-F

Location

Landmarks

Landmark/Attraction

Balkrishna Maharaja Temple (<0.5km)

Hospitals & Clinics

Smile Art Dental Clinic (<0.5km), Doctor Satish Sheregar (<0.5km), The Tooth Place (<0.5km), Kusum Doshi, Dr. Aditi Mehta (<0.5km), Chhaya Dental Lab (<0.5km), India Smile - Dental Care Professiona... Doctor MD Shah Clinic (<0.5km), Rushabh Clinic (<0.5km), Navjeevan Maternity and Surgical Nu... Shivam Pathology Laboratory (<0.5km... Smilekraft Dental Clinic and Implant ... Jehan Eye Clinic (<0.5km), Smt L. D. K. Gala Eye Hospital (<0.5km Clinotek Pathology Laboratory (<0.5... Doctor Hemant Bhave (<0.5km), Dr Dhimant K Mody (<0.5km), SMT L D K Eye Hospital-ER (<0.5km), SMT L D K Eye Hospital (<0.5km), Dr. Rajkumar Kedia Clinic (<0.5km), Dental Clinic (<0.5km), Doctor Dilip Chawda, Voras Clinical Laboratory (<0.5km), My Dental Care (<0.5km), Ashish Maternity & Nursing Home (< Doctor Deepak Jain (<0.5km), Dr Thakkars Advanced Dental Care C... Vishwa Care (<0.5km), Sun Pathology Laboratory (<0.5km)

ATM/Bank/Exchange

Saraswat Bank (<0.5km), Shamrao Vithal Co-op Bank (<0.5km), The Cosmos Cooperative Bank (<0.5... Yes Bank (<0.5km), Central Bank of India-Cotton Exchan... HDFC Bank (<0.5km), Uco Bank Atm (<0.5km), Uco Bank (<0.5km), Indian Bank (<0.5km), Thane Janata Sahakar Bank (<0.5km), Canara Bank (<0.5km), Thane Janata Sahakari Bank (<0.5km), Thane Janata Co-operative Bank (<0... Rupee Co op Bank (<0.5km), Indusind Bank (<0.5km), Saraswat Bank Atm (<0.5km), Saraswat Bank-Vile Parle East (<0.5km, ICICI Bank (<0.5km), Kotak Mahindra Bank (<0.5km), State Bank of India (<0.5km), Federal Bank (<0.5km), Idfc Bank (<0.5km), Dena Bank (<0.5km), Central Bank of India (<0.5km), Bank of Baroda (<0.5km)

Shopping Centre

Cinekorn Entertainment (<0.5km)

Restaurant & Shops

Shop on mark (<0.5km), Rachi Collections (<0.5km), Infant Area Vile Parle East (<0.5km), Bakhlava-Ji (<0.5km), Heerson (<0.5km), Panchami Designs (<0.5km), Campus Restaurant (<0.5km), Krishna Vilas (<0.5km), Jharokha by Ameer (<0.5km), Hallmark Cards & Gifts (<0.5km), Vee Cee Shop (<0.5km), F - Fashion Fever Forever (<0.5km), Merlin, H J Collection (<0.5km), Aum Designer and Printers (<0.5km), Garden Treat (<0.5km), Kabeela (<0.5km), Shree Woodland (<0.5km), Being Ethnic..But in Style by Nidhi, Ibrahim Valibhai (<0.5km), Cuts N Stones (<0.5km), Kiah, Summer Harvest (<0.5km), Kinnari (<0.5km)

Department Store

N A W Stores (<0.5km)

Public Transport

Parle College (<0.5km), Sathe College Bus Stop (<0.5km)

Hostel

Student Housing (<0.5km), College Stay (<0.5km), Skyhomes Girls Hostel (<0.5km)

Recreation

Trump Entertainments (<0.5km), Municipal Corporation Sitaram Puru... WHDC Pocket Theatre Mumbai (<0.5.. Sitaram Parshuram Sathe Udyan (<0...

Hotel

Campus Hotel (<0.5km), Hotel Kadamb Shangrila (<0.5km), Hotel Atithi (<0.5km), Satellite (<0.5km)

Service

New Franz Hair N Beauty Salon (<0.5...

* All distances are approximate

Properties

Shamik Crimson Bay News

Expert Reviews on Shamik Crimson Bay

Explore

[Projects in Mumbai](#)

[Brokers in Mumbai](#)

More Information

Report a problem with this listing

Is any information on this page outdated or incorrect?

[Report it!](#)

Disclaimer: All information is provided by advertisers, including builders/agents/owners, or collected from publicly available sources and may not be verified under RERA. Any information provided on this website, including facts and figures, should be verified independently, including via the relevant RERA website, before entering into any transaction. PropertyWala.com is only an advertising platform to help connect buyers and sellers and is not a party to any transaction, nor shall be responsible or liable to resolve any disputes between them.

[Home](#) » [Mumbai Real Estate](#) » [Projects in Mumbai](#) » [Shamik Crimson Bay - Vile Parle East, Mumbai](#)