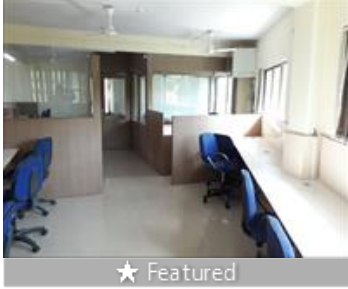




## Office Space for rent in Baner, Pune

40,001-70,000



★ Featured

### 1400 Sqft Plug N Play Office On Rent At Baner

Vishal Nagar, Baner, Pune (Maharashtra)

- Area: 1400 SqFeet ▾
- Monthly Rent: 68,000
- Available: Immediate/Ready to move
- Furnished: Furnished
- Rate: 49 per SqFeet **-5%**

### Advertiser Details



**Alliance Properties**  
Advertising Manager  
Deccan, Pune  
mob: 9922446621  
tel: +91-20-66205312  
mail:  
[www.propertywala.com/alliance-properties](http://www.propertywala.com/alliance-properties)



Scan QR code to get the contact info on your mobile

[View all properties by Alliance Properties](#)

### Description

- 25 work stations.
- Director cabin.
- Conference room.
- Reception.
- Waiting area.
- Pantry.
- AC.
- Attached wash room.
- Commercial building.
- Security.
- Prime location.

When you contact, don't forget to mention that you found this ad on PropertyWala.com.

### Features

#### General

- Power Back-up ■ Room AC ■ Lifts
- High Speed Internet ■ Wi-Fi

#### Exterior

- Visitor Parking

#### Security

- Security Guards ■ Electronic Security

#### Maintenance

- Maintenance Staff ■ Water Supply / Storage
- Waste Disposal

### Location

\* Location may be approximate

### Landmarks

#### Transportation

Tech Mahindra Helipad (<14km), Arki Helipad (<3km), Regional Centre For Military Air Wort.. Police Heliport (<7km), Oxford Golf Course Helipad Pune (<8.. Symbiosis Helipad (<8km), Kalsit Enterprises (<9km), Pune joction (<14km), Mangala (<14km), N D A Gliderdrome (<14km)

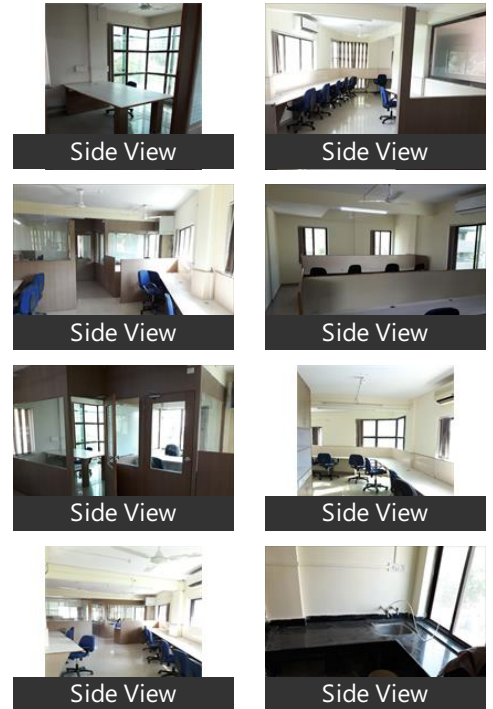
#### Religious Places

St. Thomas Orthodox Syrian Church ... Shiloh Church of God (<8km), Holy Trinity Church (<6km), Spicer Adventist University Auditoriu... St. Stephen, Vineyard Workers Church (<8km), Jesus Is Lord Ministries (<8km), The Holy Trinity Church (<6km), Spicer Adventist University House of... STECI PUNE PARISH (<7km), St. Thomas Catholic Church (<7km), The Malankara Catholic Church (<8k.. Christian Gift Store (<8km), Tamil Seventh Day Adventist Church... Indian Pentecostal Church of God Pu.. St. John Paul II Catholic Church (<9k... All Saints Church Khadki (<10km), St. Mary, St. Mary, St. John

#### Education

Loyola High School and Junior Colle... St.Joseph High School (<7km), Millennium National School (<12km), Gurukul Engineering Academy (<11k.. National Institute of Open Schooling... First Five (<3km), The Orchid School (<1km), Blue Ridge Public School (<6km), VIBGYOR High School Balewadi (<2k..

### Pictures



Sanskriti School (<12km), Sapling Nursery (Ram-Indu Park Cen... Ryan International School (<8km), Vikhe Patil Memorial School (<9km), Nrusinha High School (<6km), Chatrapati Shahu Maharaj English M... Ferns N Petals Aundh (<4km), GG International School (<11km), Indira Kids (<4km), Pumpkin Patch (<7km)

#### Recreation

The E - Square Hotel (<9km), City Pride (<11km), Alka Talkies (<12km), Carnival Cinemas Chinchwad (<12km, Vijay Citramandir (<12km), Spot18 (<5km), Rahul Talkies 70 MM (<11km), City Pride R - Deccan (<11km), [more...](#)  
E Square Carnival (<9km), Open Air Theatre (<6km), Vash Audio Vision (<4km), City Pride Royal Cinemas (<11km)

## Locality Reviews

Baner, Pune

Baner is mostly a residential and commercial hub of Pune and large portions are occupied by various IT companies. Baner is Pune's most sought after IT Hub which is also Pune's premium locale surrounded by the best of hospitals, schools, residential complexes, malls and hotels. It has easy connectivity to Mumbai banglore highway, Hinjewadi IT Park and other part of the city.

#### Pros:

- *state-of-the-art infrastructure*

#### Cons:

- *Traffic in peek hours*

Posted: Jan 30, 2017 by [Supervision Estate \(Sv Real Estate\)](#)

Baner is the fastest developing area with all infrastructure, concrete roads, shops, Malls, school, IT parks, Hotels and recreational club, Hospitals and upcoming multiplex gives this area the first preference of the people looking property in good elite location after Aundh which provide good connectivity with city as well as to the Mumbai-Bangalore highway, Hinjewadi IT hub etc. Rate appreciation is very high in Baner because of fast development.

#### Pros:

- *Best connectivity with city and Highway*
- *Great appreciation of the property*

#### Cons:

- *Ground water shortage in Summer*

Posted: Jun 14, 2016 by [Prafulh Messhram \(Opulentt Homess\)](#)

Baner is a noiseless place. Good ventilation and neighbors are helpful. All the places like High School, Hospital, ATM and shops as well as petrol pump are at walk able distance.

#### Pros:

- *Good Connectivity*

Posted: Feb 1, 2016 by Sharad Kate

Baner is a safe and secure place for all the residents. A very good opportunity for investment also.

#### Pros:

- *Good Location*
- *All amenities nearby*

Posted: Nov 5, 2015 by [Yogesh Shinde \(Unique Developers\)](#)

Baner is locality near to Bombay - Bangalore Expressway which gives very good investment place to investors from Mumbai. Proximity to Hinjewadi IT Hub makes the place more important and good investment proposal.

#### Pros:

- *Good investment*
- *Good returns*
- *Good rent available*

Posted: Oct 24, 2015 by Pravin Bhangale

Baner is the fastest growing suburb of Pune, and which has become envy of traditional posh localities like Koregaon Park and Prabhat Road areas. Most of it is populated by the IT Crowd as it is nearest to the well known IT destination of Hinjewadi, which has the biggest head of all "Big Three". Very good infrastructure with malls, schools, and hospitals within a radius of 3 km. Very close to the bypass going to Mumbai and can belt along it.

#### Pros:

- *Well developed area*

Posted: Aug 27, 2015 by Maj Sathe

Baner - is called to be the next KP / Kalyani Nagar of Pune which has all infrastructure ready. Concrete roads, shopping malls, reputed schools, colleges, food joints. Recently opened KFC, Puma Showroom adds to its charm. Cummings India office gives one more star to Baner's glory. Newly planned Multiplex and Mall will make it more preferred location of IT, Banking sector.

#### Pros:

- *Close proximity to Hinjewadi*
- *Close proximity to University, Kothrud*
- *Easy access to daily needs and modern lifestyle*

Posted: Aug 10, 2014 by [Sachin Wani \(Wani Properties\)](#)

Baner is an upcoming development with all modern amenities around the area. Closer to Pune and easy access to highway for Mumbai.

#### Pros:

- *Upcoming cream area*
- *Connectivity*
- *Modern*

Posted: Jun 12, 2013 by Hrishu Bagade

Explore

[Similar Properties](#)

[Properties in Baner, Pune](#)

[Projects in Pune](#)

[Brokers in Pune](#)

More Information

Report a problem with this listing

Is this property no longer available or has incorrect information?

[Report it!](#)

**Disclaimer:** All information is provided by advertisers and should be verified independently before entering into any transaction. PropertyWala.com is only an advertising platform to help connect buyers and sellers and is not a party to any transactions, nor shall be responsible or liable to resolve any disputes between them.