

## DS Max Sahara - Parappana Agrahara, Bangaloo.



### Epitome of Luxury

DS Max Sahara by DS Max Properties Pvt Ltd at the very prime location of Parappana Agrahara, Chikkanagamangala, Bangalore. The project hosts 2 and 3 bhk apartment in various sizes.

- Project ID: J918957611
- Builder: DS Max Properties Pvt Ltd
- Location: DS Max Sahara, Chikkanagamangala, Parappana Agrahara, Bangalore - 560099 (Karnataka)
- Completion Date: Dec, 2024
- Status: Started

### Description

**DS Max Sahara** by DS Max Properties Pvt Ltd is located in Parappana Agrahara, Chikkanagamangala one of the most promising location of Bangalore. The project carpet area is spread over 1000 - 1357 sq.ft. comprising of 2 and 3 bhk apartments in different sizes. The project is flooded with such facilities- 24Hrs Water Supply CCTV Cameras Covered Car Parking Entrance Gate With Security Cabin Gated Community Gym Jogging Track Kids Pool Landscaped Garden. The place is very well connected with Airport, Railway Station, Bus Stand, Supermarket, Departmental Store, Hospital, Restaurants, City Centre, Educational Institution, Parks, Clubs, Foods etc.

**Rera Id:** PRM/KA/RERA/1251/308/PR/201201/003733

### Amenities :

- 24Hrs Water Supply
- CCTV Cameras
- Covered Car Parking
- Entrance Gate With Security Cabin
- Gated Community
- Gym
- Jogging Track
- Kids Pool
- Landscaped Garden
- Lift
- Party Area
- Play Area
- Rain Water Harvesting
- Squash Court
- Swimming Pool
- Table Tennis
- Waste Disposal

**DS-MAX Properties Pvt. Ltd** is an award-winning real estate development firm, based in Bangalore. With a dream to "Share the Joy of Living" across all sections of society, Dr. K V Satish set his foot on the realty industry with DS-MAX Properties Pvt. Ltd. Since its inception, DS-MAX Properties has been one of the most preferred and trusted realty developer in Bangalore. Our relentless effort towards innovation, quality management, attention to minute details, our customer-centric approach and an uncompromising attitude towards quality in all spheres.

### Features

#### Luxury Features

- Power Back-up ■ Lifts

#### Exterior Features

- Reserved Parking ■ Visitor Parking ■ Servant Quarter

#### Maintenance

- Water Supply / Storage ■ Rain Water Harvesting

#### Security Features

- Security Guards

#### Recreation

- Swimming Pool ■ Park ■ Fitness Centre / GYM
- Club / Community Center

#### Land Features

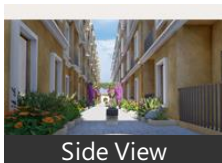
- Club / Community Center ■ Water Connection
- Electric Connection ■ Close to Hospital
- Close to School ■ Close to Shopping Center/Mall

### Gallery

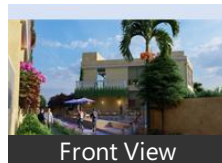
#### Pictures



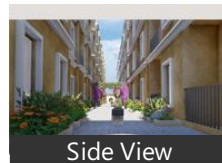
Front View



Side View



Front View



Side View



Main Entrance

## Floor Plans



Floor Plan A



Floor Plan B

## Location

## Landmarks

### ATM/Bank/Exchange

Punjab National Bank-Electronic City.. Karnataka Gramin Bank-Huskur (<2k... Axis Bank Atm (<2km), Axis Bank (<2km), HDFC Bank (<3km), Bank of Maharashtra (<3km), Kotak Mahindra Bank (<3km), ICICI Bank (<3km)

### Hospitals & Clinics

PHC (<2km), PHC-ER (<2km), NR Health Care Foundation (<2km), NR Health Care Foundation-ER (<2km) Govt Veternery Hospital-ER (<2km), Govt Veternery Hospital (<2km), Shri Vinayaka Clinic (<3km), Narayana Opticians Chandapura (<3... Shri Chowdeshwari Clinic (<3km), Acts Health Centre (<3km), Lakshmi Homeopathy Clinic (<3km), Sanjeevini Health Care (<3km)

### Hotel

Haripriya Life Style (<2km), Prestige Garden-Estate Club (<3km), Spot on 63456 Balaji Residency (<3km. ibis Hotel (<3km), Hotel Laxmi (<3km), Hotel Royal Comfort (<3km), Hotel Comfort Park (<3km), Movenpick Hotel and Spa (<3km), Hotel Royal Brigade (<3km), Fab Hotel Corporate (<3km), Treebo Silicon Business Hotel (<3km), Hotel Manjunatha (<3km), Oyo 10009 Hotel loliten (<3km), Westforhotel (<3km), Vishranthi Hotel (<3km), Techm Guest House (<3km)

### Restaurant & Shops

Venkateshwara Provision Stores (<2k... Organic Mandya (<2km), Kukke Sree Textiles (<3km), Crazybakasur Marketplace (<3km), Kundavi Collections (<3km), S S Provision Store (<3km), Lavanya Stores (<3km), Balaji Provision Stores (<3km), Nitya Provision Store (<3km), Government Fair Price Depot (<3km), Mataji Provision Store (<3km), Namnii (<3km), Hari Krishna Fashion & Footwear (<3.. Shri Rajarajeshwari Bar & Restaurant ... Kinnu, Thambulam - the Art of Showing Gra.. She by Liz (<3km), Saloni Boutique (<3km), Ramdev Textiles (<3km)

### Public Transport

B M T C Bus Depot 38-Chikkanagam... Dodda Nag Mangala Bus Stop (<3km)

### Hostel

Om Sai Ram Pg (<3km), Mathru Pg (<3km), Shri Venkateshwara Hents Pg (<3km), Venkeswar Pg (<3km), Venakeshwara Pg (<3km), Venketeswara Gents Pg (<3km), Luxury PG-Electronic City (<3km), Vgn Pg (<3km), Nagarjuna Deluxe Pg For Gents Bhav... Varasiddi Vinayaka Gents Pg (<3km), Om Sai PG Accomodation (<3km), New Svr Gents Pg (<3km), Exult Pg (<3km), Psr Pg Luxury Pg (<3km), Marantha Pg (<3km), Shri Varasidipg (<3km), Varna Siddi Vinayaga Pg (<3km), Sree Venkadaswara Hostel (<3km), Welcome Pg (<3km), Thirumala Pg (<3km), Shri Manjunath PG for Gents (<3km), Maruthi Pg (<3km), Jai Hanuman Pg (<3km), Yalineer Pg (<3km), Anvisuites Pg (<3km), Mayuri Pg (<3km), Shivam Girls Pg (<3km), Green Acres Guest House (<3km), Nestin Pg (<3km), El Mayuri Pg (<3km), Shiva Ladies Pg (<3km), Yeswanthi Ladies Pg (<3km), Amulu Pg (<3km)

### Department Store

Family Super Mart (<3km), Shabari Bakery & Provision Stores (<...

\* All distances are approximate

## Properties

### DS Max Sahara News

### Expert Reviews on DS Max Sahara

#### Explore

[Projects in Bangalore](#)

[Brokers in Bangalore](#)

#### More Information

#### Report a problem with this listing

Is any information on this page outdated or incorrect?

[Report it!](#)

**Disclaimer:** All information is provided by advertisers, including builders/agents/owners, or collected from publicly available sources and may not be verified under RERA. Any information provided on this website, including facts and figures, should be verified independently, including via the relevant RERA website, before entering into any transaction. PropertyWala.com is only an advertising platform to help connect buyers and sellers and is not a party to any transaction, nor shall be responsible or liable to resolve any disputes between them.

[Home](#) » [Bangalore Real Estate](#) » [Projects in Bangalore](#) » [DS Max Sahara - Parappana Agrahara, Bangalore](#)