

## 2 Bedroom Apartment / Flat for sale in Unique Youtopia, Kharadi, Pune

96.5 lakhs



### 2 Bedroom Apartment For Sale In Kharadi, Pune

Unique Youtopia, Kharadi, Pune - 411014 (Maharashtra)

- Project/Society: [Unique Youtopia](#)
- Area: 71 SqMeters ▾
- Bedrooms: Two
- Bathrooms: Two
- Transaction: New Property
- Price: 9,650,000
- Rate: 1.36 lakh per SqMeter **+10%**
- Age Of Construction: Under Construction
- Possession: Within 1 Year

### Advertiser Details

**TRESPECT**  
**TRESPECT INDIA**  
Director

Bandra Kurla Complex, Mumbai  
mob: 9999788104  
tel:  
mail:  
[propertywala.com/trespect-india-private-limited](mailto:propertywala.com/trespect-india-private-limited)



Scan QR code to get the contact info on your mobile  
[View all properties by TRESPECT INDIA PRIVATE LIMITED](#)

### Description

**Unique Youtopia** is located in the heart of Kharadi , Pune offers 2 BHK apartments ranging from 71 sq meters. The project offers 45+ amenities spread across 40000 sqft. It is spread over an area of 5 acres of land. There are 3 buildings with 300 units. The project is in the hub of activity and if we look for shopping options, which are just a few kilometers away.

**RERA ID:** P52100032483

### Amenities

- Gazebo
- Infinity Pool
- Jogging Track
- Badminton Court
- Multipurpose Court
- Outdoor Gymnasium
- Wall Climbing for Kids
- Party Hall with Pantry
- Senior Citizens Sit Outs
- Crechè / Daycare
- Spa / Massage Room
- School Bus Waiting Area
- Projector / Theatre Area
- WiFi Enabled Workstations
- Indoor Gymnasium with AC
- Visiting / Meeting Area in Lobbies

Please mention that you found this ad on PropertyWala.com when you call.

### Features

#### General

- Power Back-up
- Centrally Air Conditioned
- Lifts
- High Speed Internet
- Wi-Fi

#### Security

- Security Guards
- Electronic Security
- Intercom Facility

#### Lot

- Balcony
- Park Facing

#### Interior

- Woodwork
- Modular Kitchen
- Granite Flooring
- Wooden Flooring
- Fly Proofing
- Feng Shui / Vaastu Compliant

#### Exterior

- Reserved Parking
- Visitor Parking

#### Recreation

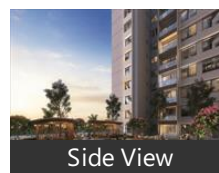
- Swimming Pool
- Park
- Fitness Centre / GYM
- Club / Community Center

#### Maintenance

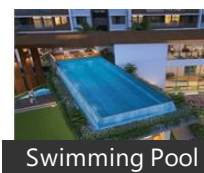
- Maintenance Staff
- Water Supply / Storage
- Water Softner
- Rain Water Harvesting
- Waste Disposal

### Location

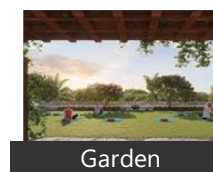
### Pictures



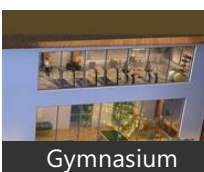
Side View



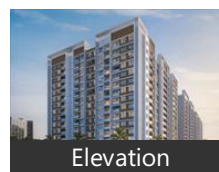
Swimming Pool



Garden



Gymnasium



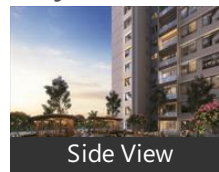
Elevation

### Floor Plans

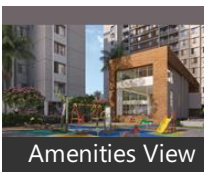


Location Map

### Project Pictures



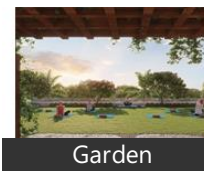
Side View



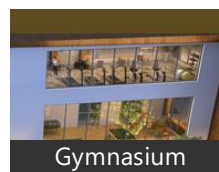
Amenities View



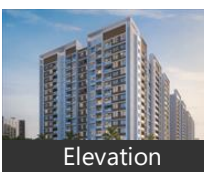
Swimming Pool



Garden



Gymnasium



Elevation

\* These pictures are of the project and might not represent the property

### Project Floor Plans



Location Map

\* These floor plans are of the project and might not represent the property

\* Location may be approximate

## Landmarks

### Hotel

The Gold Haven - Serviced Residence.. Oyo Home 30156 Exotic Stay (<0.5km. Oyo 13283 Hotel Gargi Inn (<0.5km), Oyo 13283 Hotel Prithvi Inn (<0.5km)

### Hostel

Ravi PG (<0.5km)

### Restaurant & Shops

Amir Chicken (<0.5km), Bhagyashree Enterprises (<0.5km), Tanishka Enterprises (<0.5km), Flagship 24 Value Clothing (<0.5km), Nikku Namkin & Cooldrink (<0.5km), Sheri Vardlaxmi Ladies Collection (<0.5km), Jgor Linen (<0.5km), Mataji Super Shoppee (<0.5km), Pudhari Linen Collection (<0.5km), Krishna Sarees (<0.5km), Jeans Corner And Collection (<0.5km.. Selection Point (<0.5km), Omkar Means Wear (<0.5km), Shivanand Family Resto & Bar (<0.5k.. Sai Traders (<0.5km), Rajlaxmi Collection (<1km), Tulsi Collection (<1km), Pooja Footwear And Back Corner (<1.. Bhawani Foot Wear (<1km), Choice (<1km), Rupshree Collection (<1km), Shri Siddhi Super Market (<1km), Handmade Wedding Dresses (<1km), Mithilesh Stores (<1km), Triansh Fashion (<1km), Yash Collections (<1km), Kalyani Super Market (<1km), Shiv Krupa Foot Wear (<1km), Rajshree Saree (<1km), Mataji Supermarket (<1km), Shubham Enterprises (<1km), G2 Brand Collection (<1km)

### Hospitals & Clinics

Sneha Speciality Hospital (<0.5km), Sneha Speciality Hospital-ER (<0.5km. Jiva Ayurveda Clinic (<0.5km), Clear Skin (<0.5km), Vatsalya Hospital (<0.5km), Vista Clinic (<0.5km), Vatsalya Hospital-ER (<0.5km), SRL Diagnostics Mundhwa (<0.5km), Care Diagnostics (<0.5km), Shri Sai-Shanker Clinic (<0.5km), Bridgeway Dental (<0.5km), Ravira Columbia Asia Hospital (<0.5k.. Ravira Columbia Asia Hospital-ER (<0.5km), Apex Diagnostics (<0.5km), Lawrence & Mayo (<0.5km), Qtest Lab & Diagnostics (<0.5km), Sainath Medical (<0.5km), Manipal Hospital-ER (<0.5km), Family Dentist Tree Advanced Denta... [more..](#)

## Locality Reviews

Kharadi, Pune

One of the promising place to live in. With all the services, malls within 6km radius.

### Pros:

- Easy connectivity

### Cons:

- Prices high

Posted: Sep 2, 2020 by Tipsy J

Everything is nearby. Sophisticated atmosphere. Hygienic. All shopping malls,schools, hospitals, gymnasium,etc everything is nearby.

### Pros:

- 1) Everything is Nearby.
- 2) Sophisticated atmosphere
- 3) Hygienic

### Cons:

- NO CONS

Posted: Aug 9, 2020 by Shubham Kaswa

Kharadi is the latest, rapidly developing IT Hub of Pune. It is centrally located in the heart of the city. With EON IT Park, many world renowned businesses are setting up their offices in this location. Property rates in this location are shooting up fast. It is a sought-after locality for IT brands and residential projects are selling at a rapid pace. Kharadi is the hot location for investments and growing businesses.

### Pros:

- Good connectivity, widest roads
- Malls,hospitals, multiplexes, schools in vicinity

Posted: May 15, 2019 by Sneha Bijlani

One of the fastest growing locality of Pune. Great connectivity to airport, railway station and access to Solapur and Ahmednagar highways. Close to shopping malls and movie theaters

### Pros:

- Good transport connectivity
- Proximity to offices
- Close to the airport

### Cons:

- Prices increasing rapidly

Posted: Feb 11, 2019 by Prabal Deb

Kharadih is one of the fastest growing residential and commercial hubs in Pune. With IT hubs and Commercial Malls, every thing from work to fun is within minutes of reach. Several gated communities and vicinity to airport and areas like Koregaon Park, Kalyani nagar and Viman Nagar are an added advantage.

### Pros:

- Nearer to work places like MIDC, WTC
- Several Malls like Seasons Mall, Amonara Mall, Several Hospitals with emergency care units
- Cultural Diversity

### Cons:

- *The traffic at peak hours is sometimes bad*

Posted: Jun 7, 2017 by Abhijit Majumdar

World Trade Center in Kharadi - hub of business in Pune. DP road connecting EON to Wagholi and Surrounding areas.

**Pros:**

- *IT Hub*
- *International Company Presence*
- *Well developed Infrastructure*

Posted: Jul 17, 2014 by [Jennifer A \(Gulmohar Development\)](#)

Good connectivity to EON IT park, distance is just 3.5 kms, and from Nagar road just a 200 m. Also well connected to Kharadi bypass and Magarpatta city.

**Pros:**

- *Good connectivity to Eon IT park, Kharadi bypass and also Magarpatta city*

Posted: May 4, 2013 by [Sagar sudame \(Pristine Group\)](#)

Kharadi, Pune is rated 8 out of 10 based on 7 user reviews.

Disclaimer: The reviews are opinions of PropertyWala.com members, and not of PropertyWala.com.

Explore

[Similar Properties](#)

[Properties in Kharadi, Pune](#)

[Projects in Pune](#)

[Brokers in Pune](#)

More Information

Report a problem with this listing

Is this property no longer available or has incorrect information?

[Report it!](#)

**Disclaimer:** All information is provided by advertisers and should be verified independently before entering into any transaction. You may visit the relevant RERA website of your state to verify the details of this property. PropertyWala.com is only an advertising platform to help connect buyers and sellers and is not a party to any transactions, nor shall be responsible or liable to resolve any disputes between them.